

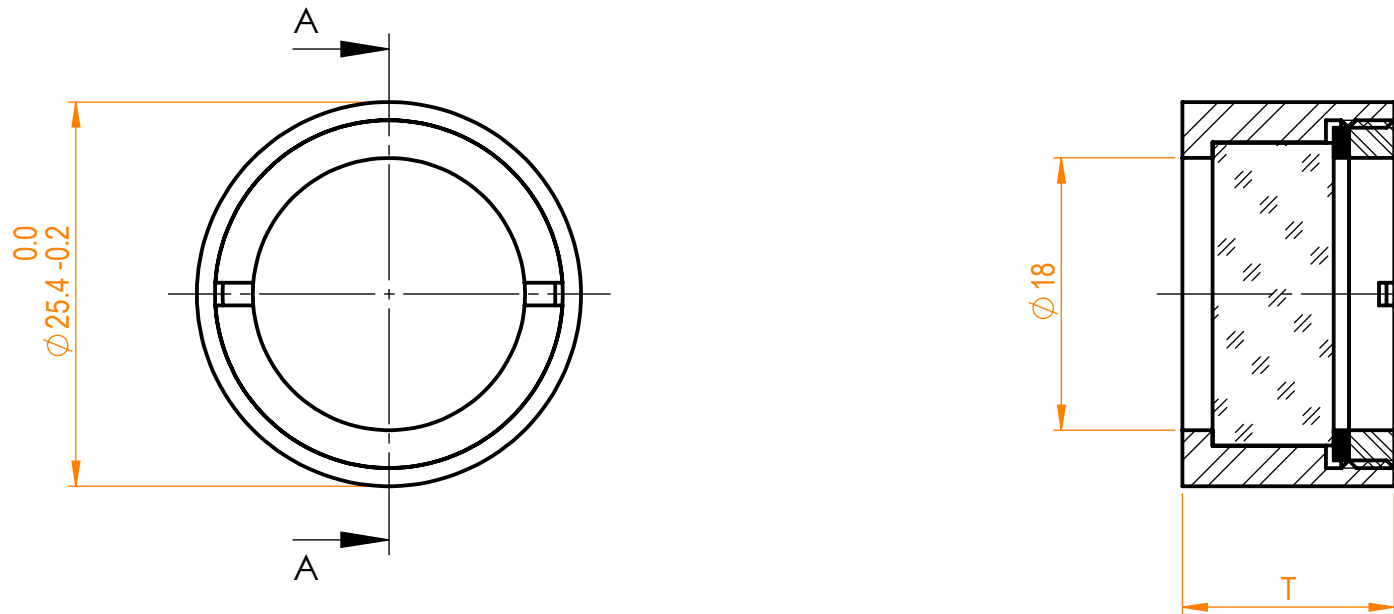
NOTES:

1. Material: Single crystal quartz (rotator),
Black anodized aluminium (housing);
2. Thickness depends on wavelength and rotation angle;
3. All dimensions are in mm;
4. Protective chamfers: 0.5 mm x 45°;
5. Parallelism: <10 arcsec;
6. Opticsl axis: normal to faces S1, S2 of rotation;
7. Rotation angle of polarization plane: 45° at @780nm;
8. Laser damage threshold: 5 J/cm² at @1064nm, 10nsec pulses;




Isometric view 1:2

A-A



Specifications are subject to change without notice
Dimensions are for reference only

| Parameters | | | |  info@eksmaoptics.com www.eksmaoptics.com | | PP rotator, D=25.4 mm | | | |
|------------------|---------------------|---------------------|---|--|------|-----------------------|----------|-------------|------|
| | S1 | S2 | | | | Name | Date | Part number | Rev. |
| Shape | Plano | Plano | Proprietary | Approved | A.K. | 2021.04.28 | 470-4784 | A | 2:1 |
| Surface flatness | $\lambda/10$ @633nm | $\lambda/10$ @633nm | The information in this drawing is property of EKSMA Optics. Any reproduction in part or as a whole without the written permission of EKSMA Optics is prohibited. | Drawn | V.S. | 2021.04.28 | | | |
| Surface quality | 20-10 s/d | 20-10 s/d | | | | | | | |
| Clear aperture | >90% | >90% | | | | | | | |
| Coating | AR<0.2%, AOI=0° | AR<0.2%, AOI=0° | | | | | | | |