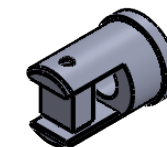
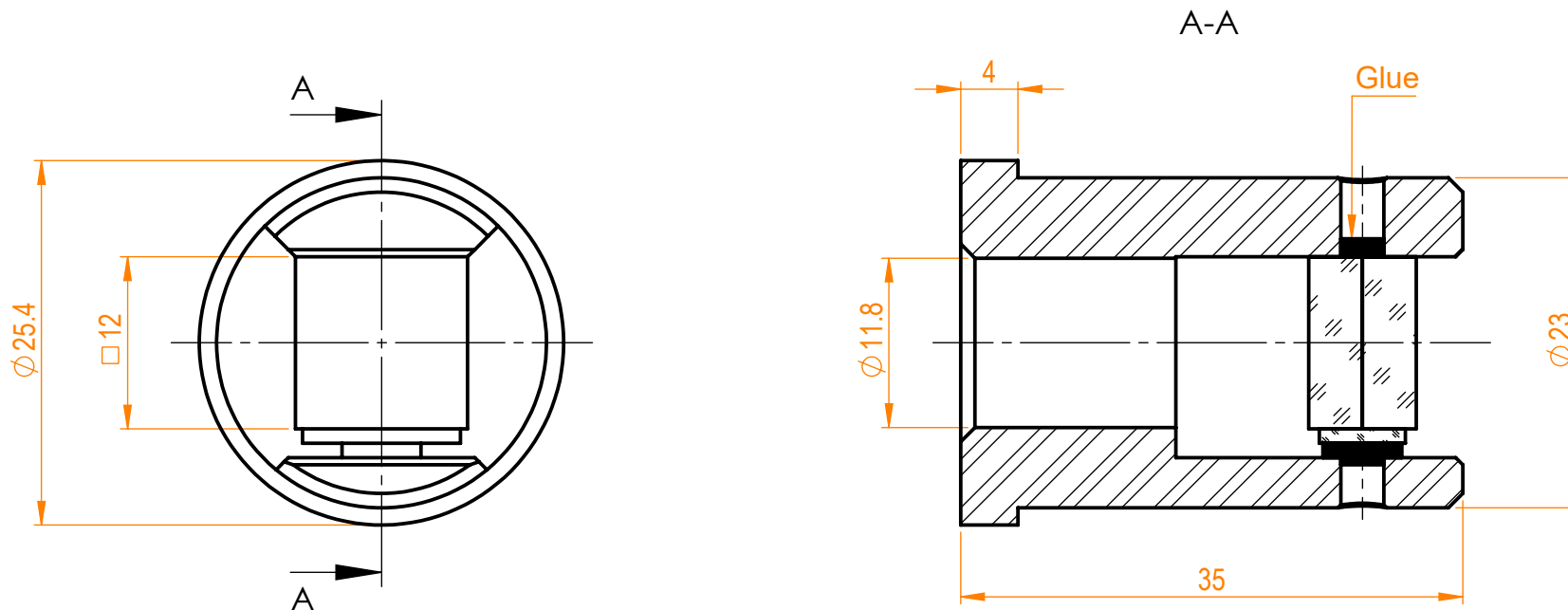


NOTES:


1. Material: Natural calcite (prism),
Black anodized aluminium (housing);
2. G - Fine ground surface;
3. All dimensions are in mm;
4. Protective chamfers: 0.5 mm x 45°;
5. Beam separation angle: 10° @633nm;
6. Extinction ratio: 1:100000;



Isometric view 1:2



Specifications are subject to change without notice
Dimensions are for reference only

Parameters				 info@eksmaoptics.com www.eksmaoptics.com		Wollaston prism, H=L=12 mm				
	S1	S2								
Shape	Plano	Plano								
Surface flatness	$\lambda/4$ @633nm	$\lambda/4$ @633nm								
Surface quality	40-20 s/d	40-20 s/d								
Clear aperture	>90%	>90%								
Coating	-	-								
				Proprietary The information in this drawing is property of EKSMA Optics. Any reproduction in part or as a whole without the written permission of EKSMA Optics is prohibited.		Name A.K.	Date 2021.04.29	Part number 450-2121-M2Ps	Rev. A	Scale 2:1
1	2	3	4	5	6					