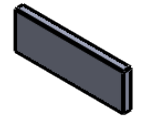
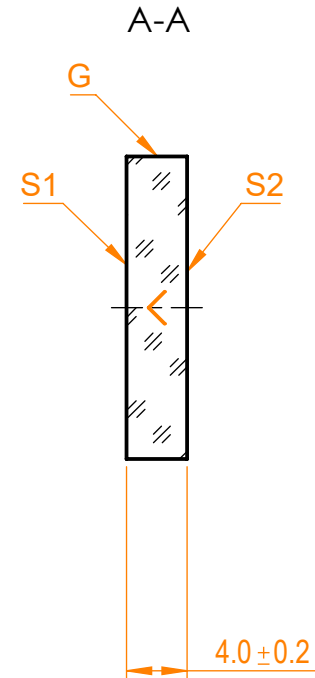
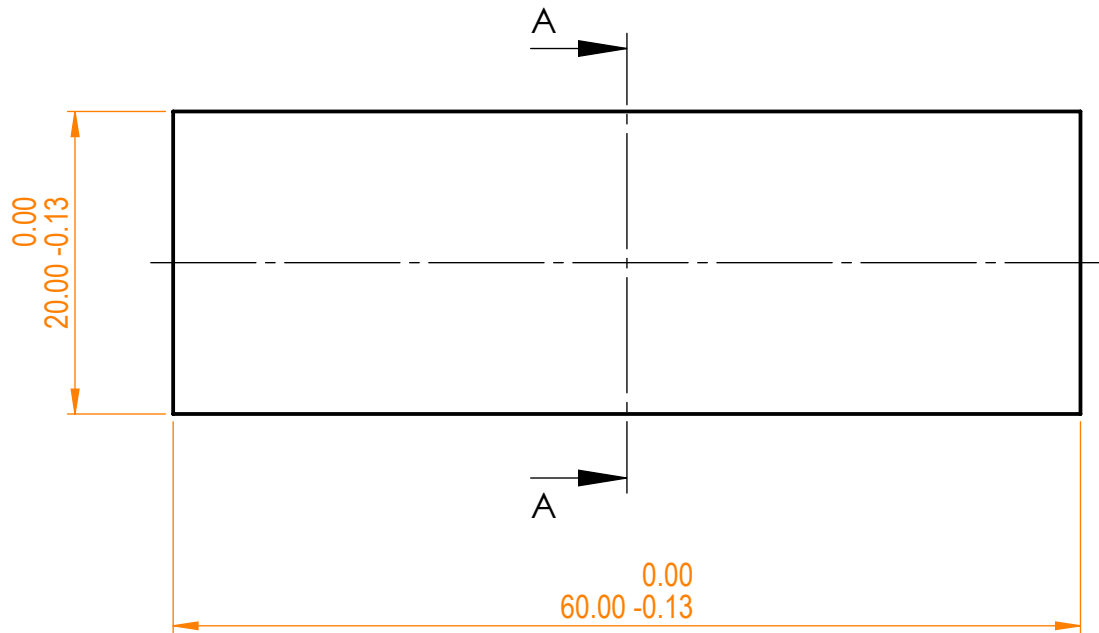


**NOTES:**


1. Material: UVFS;
2. G - Fine ground surface;
3. All dimensions are in mm;
4. Protective chamfers: 0.3 mm x 45°;
5. Parallelism: <30 arcsec;
6. Angle of incidence: 70°/ Angle of incidence tolerance: ±2°;
7. Transmitted wavefront distortion: λ/10 @633nm;
8. Extinction ratio: T<sub>p</sub>:T<sub>s</sub>> 200:1;
9. Laser Induced Damage Threshold: >50 mJ/cm<sup>2</sup> @1030nm, 50Hz, 50fsec pulses;



Isometric view 1:3



Specifications are subject to change without notice  
 Dimensions are for reference only

Parameters			 info@eksmaoptics.com www.eksmaoptics.com	BTFL polarizer, H=20 mm, L=60 mm, T=4 mm						
	S1	S2		Proprietary		Name	Date	Part number	Rev.	Scale
Shape	Plano	Plano				A.K.	2021.01.11	420-1698BBi70	A	2:1
Surface quality	20-10 s/d	20-10 s/d			V.S.	2021.01.11				
Clear aperture	>90%	>90%			Approved					
Coating	R <sub>s</sub> /T <sub>p</sub> >99.5/95% @980-1080nm	R <sub>p</sub> <0.3% @980-1080nm	The information in this drawing is property of EKSMA Optics. Any reproduction in part or as a whole without the written permission of EKSMA Optics is prohibited.		Drawn					