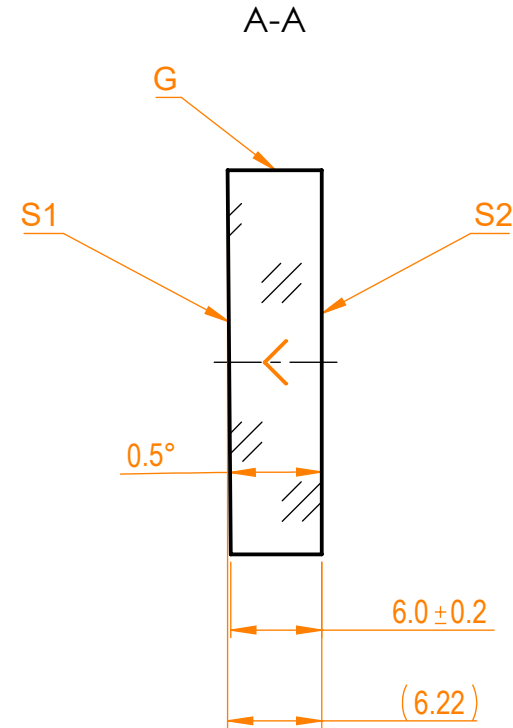
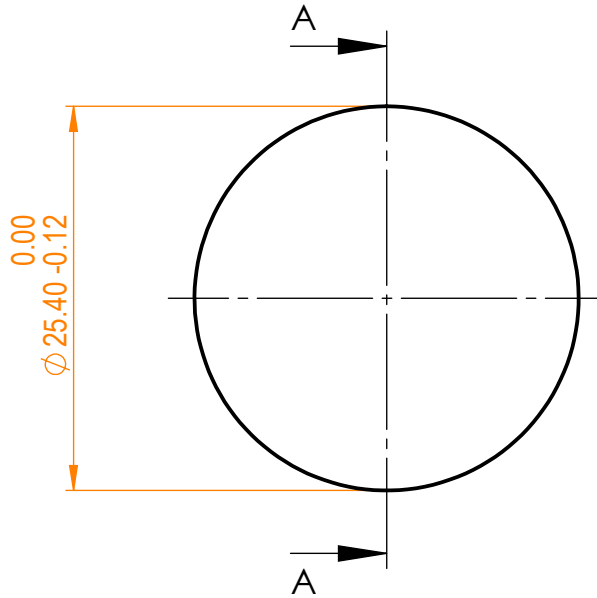


NOTES:

1. Material: N-BK7;
2. G - Fine ground surface;
3. All dimensions are in mm;
4. Wedge tolerance: ± 3 arcmin;
5. Protective chamfers: 0.3 mm x 45°;
6. Beam deviation: 0.25° at @1064nm, 0.26° at @532nm;



Isometric view 1:2



Specifications are subject to change without notice
Dimensions are for reference only

| | Parameters | |
|------------------|---------------------|---------------------|
| | S1 | S2 |
| Shape | Plano | Plano |
| Wedge | 0.5° | 0 |
| Surface flatness | $\lambda/10$ @633nm | $\lambda/10$ @633nm |
| Surface quality | 20-10 s/d | 20-10 s/d |
| Clear aperture | >90% | >90% |
| Coating | - | - |



PW prism, D=25.4 mm, T=6 mm

| Proprietary | Approved | Name | Date | Part number | Rev. | Scale |
|---|----------|------|------------|-------------|------|-------|
| The information in this drawing is property of EKSMA Optics. Any reproduction in part or as a whole without the written permission of EKSMA Optics is prohibited. | Approved | A.K. | 2020.12.14 | 311-0200E | A | 2:1 |
| | Drawn | V.S. | 2020.12.14 | | | |