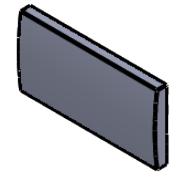
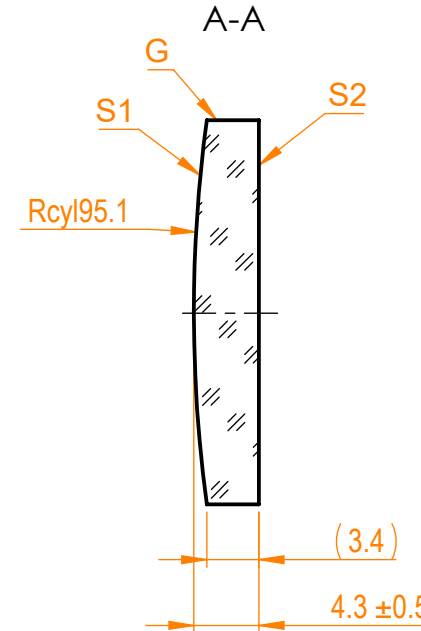
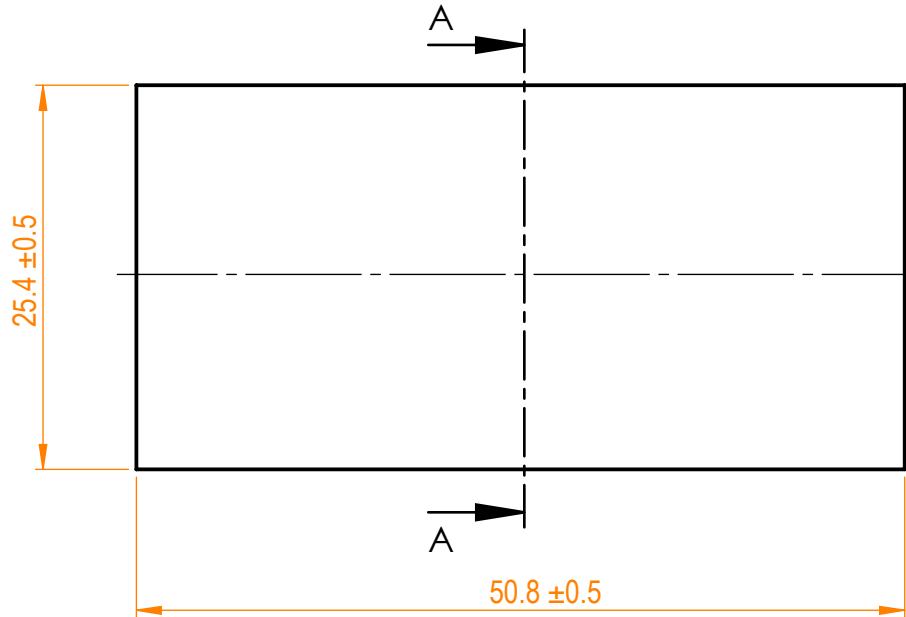


NOTES:


1. Material: UVFS;
2. Design wavelength: 355 nm;
3. Focal length: $F=+200\text{ mm} \pm 2\%$;
4. Centration error: $\leq 3\text{ arcmin}$;
5. G - Fine ground surface;
6. All dimensions are in mm;



Isometric view 1:2



Specifications are subject to change without notice
 Dimensions are for reference only

Parameters					UVFS pl/cx cylindrical (25.4 x 50.8) mm, F=200 mm					
	S1	S2								
Shape	Convex	Plano	info@eksmaoptics.com www.eksmaoptics.com		Proprietary	Name	Date	Part number	Rev.	Scale
Radius of curvature	95.1	Infinity								
Surface quality	40-20 s/d	40-20 s/d			Approved	A.K.	2020.03.26	120-1225E	A	2:1
Surface irregularity	1λ @632.8 nm	1λ @632.8 nm								
Clear aperture	≥90%	≥90%			Drawn	M.B.	2020.03.26			
Protective chamfers	0.2 - 0.3 mm x 45°	0.2 - 0.3 mm x 45°								

The information in this drawing is property of EKSMA Optics. Any reproduction in part or as a whole without the written permission of EKSMA Optics is prohibited.