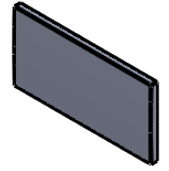
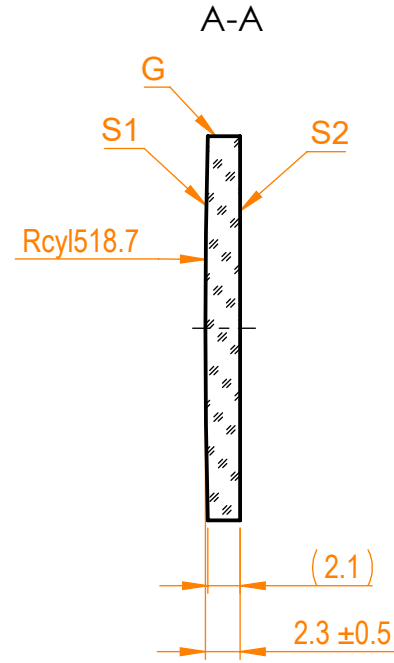
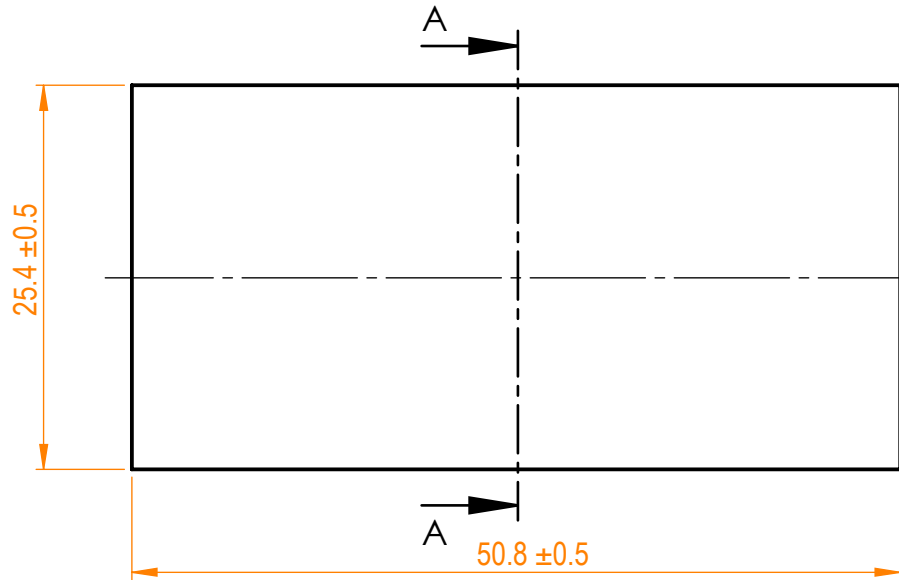



- NOTES:  
 1. Material: BK7;  
 2. Design wavelength: 546 nm;  
 3. Focal length:  $F=+1000 \text{ mm} \pm 2\%$ ;  
 4. Centration error:  $\leq 3 \text{ arcmin}$ ;  
 5. G - Fine ground surface;  
 6. All dimensions are in mm;



Isometric view 1:2



Specifications are subject to change without notice  
 Dimensions are for reference only

Parameters			 info@eksmaoptics.com www.eksmaoptics.com		BK7 pl/cx cylindrical (25.4 x 50.8) mm, F=1000 mm				
	S1	S2			Name	Date	Part number	Rev.	Scale
Shape	Convex	Plano	Proprietary	Approved	A.K.	120-0240E	A	2:1	
Radius of curvature	518.7	Infinity							The information in this drawing is property of EKSMA Optics. Any reproduction in part or as a whole without the written permission of EKSMA Optics is prohibited.
Surface quality	40-20 s/d	40-20 s/d	Drawn	2020.03.26					
Surface irregularity	1λ @632.8 nm	1λ @632.8 nm							
Clear aperture	≥90%	≥90%							
Protective chamfers	0.2 - 0.3 mm x 45°	0.2 - 0.3 mm x 45°							