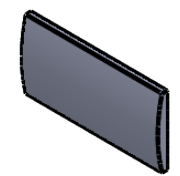
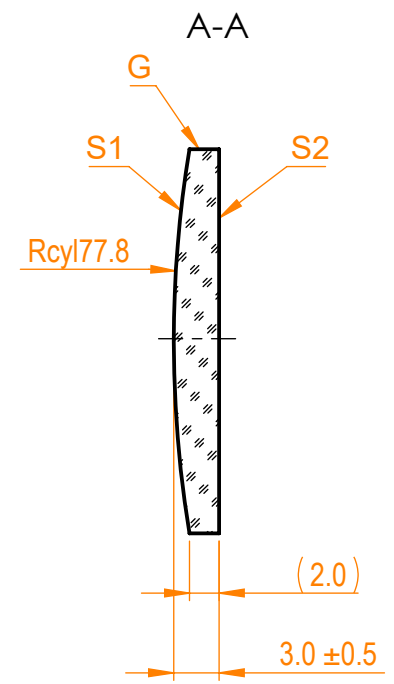
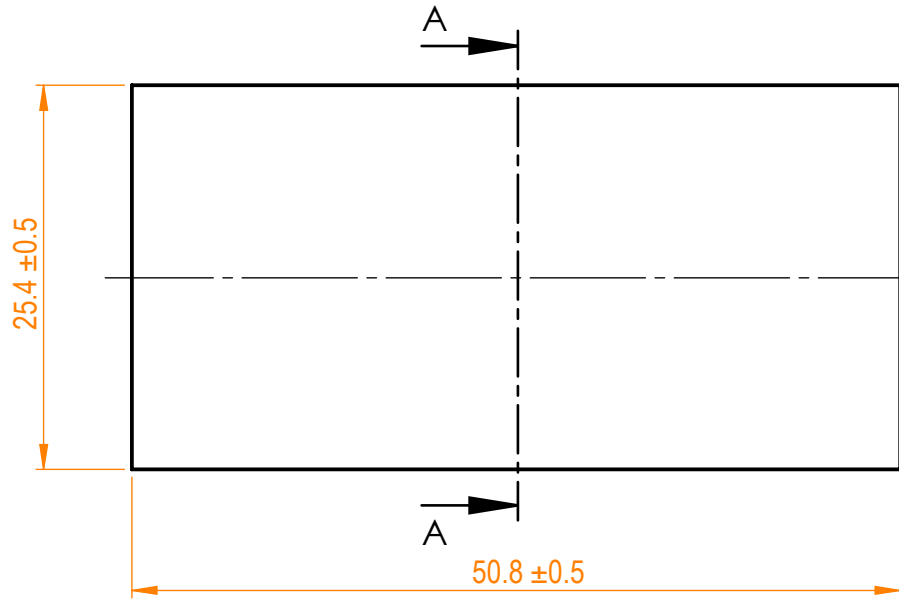



- NOTES:
 1. Material: BK7;
 2. Design wavelength: 546 nm;
 3. Focal length: F=+150 mm ± 2%;
 4. Centration error: ≤ 3 arcmin;
 5. G - Fine ground surface;
 6. All dimensions are in mm;



Isometric view 1:2



Specifications are subject to change without notice
 Dimensions are for reference only

Parameters			 info@eksmaoptics.com www.eksmaoptics.com	BK7 pl/cx cylindrical (25.4 x 50.8) mm, F=150 mm						
	S1	S2		Proprietary	Name	Date	Part number	Rev.	Scale	
Shape	Convex	Plano			The information in this drawing is property of EKSMA Optics. Any reproduction in part or as a whole without the written permission of EKSMA Optics is prohibited.	Approved	A.K.	2020.03.26	120-0220E	A
Radius of curvature	77.8	Infinity		Drawn		M.B.	2020.03.26			
Surface quality	40-20 s/d	40-20 s/d								
Surface irregularity	1λ @632.8 nm	1λ @632.8 nm								
Clear aperture	≥90%	≥90%								
Protective chamfers	0.2 - 0.3 mm x 45°	0.2 - 0.3 mm x 45°								