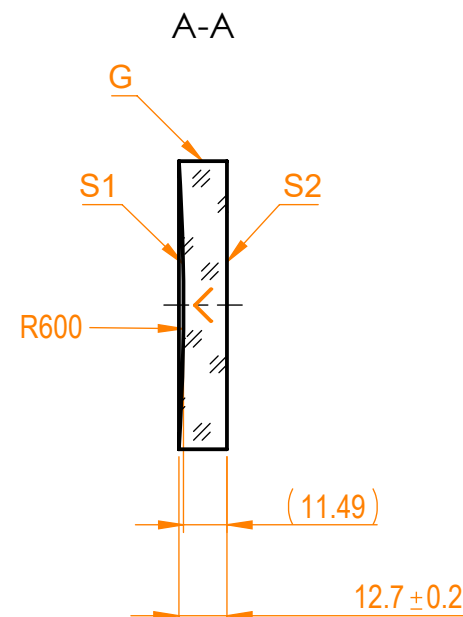
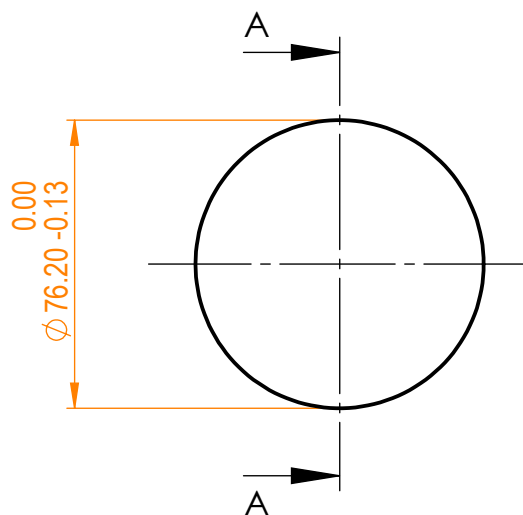


NOTES:

1. Material: N-BK7;
2. G - Fine ground surface;
3. All dimensions are in mm;
4. Wedge: <3 min;
5. Protective chamfers: 0.3 mm x 45°;
6. Group delay dispersion: <|5fs<sup>2</sup>|;
7. Laser Induced Damage Threshold: > 0.25 J/cm<sup>2</sup> at @800nm, 100Hz, 100fsec pulses;



Isometric view 1:6



Specifications are subject to change without notice  
Dimensions are for reference only

Parameters

|                     | S1  | S2                        |
|---------------------|---|---------------------------|
| Shape               | Concave   | Plano                     |
| Radius of curvature | 600   | Infinity                  |
| Surface flatness    | $\lambda/10$ @633nm   | $\lambda$ @633nm per inch |
| Surface quality     | 40-20 s/d   | 80-50 s/d                 |
| Clear aperture      | >90%  | >90%                      |
| Coating             | Enhanced silver<br>R>98.5% @600-1100nm,<br>R>99% @700-900nm | Uncoated                  |



N-BK7 pl/cv mirror, D=76.2 mm, T=12.7 mm

| Proprietary   |          | Name | Date       | Part number    | Rev. | Scale |
|---|----------|------|------------|----------------|------|-------|
| The information in this drawing is property of EKSMA Optics. Any reproduction in part or as a whole without the written permission of EKSMA Optics is prohibited. | Approved | A.K. | 2020.11.16 | 097-0125FR-600 | A    | 1:2   |
|   | Drawn    | V.S. | 2020.11.16 |                |      |       |