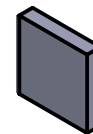
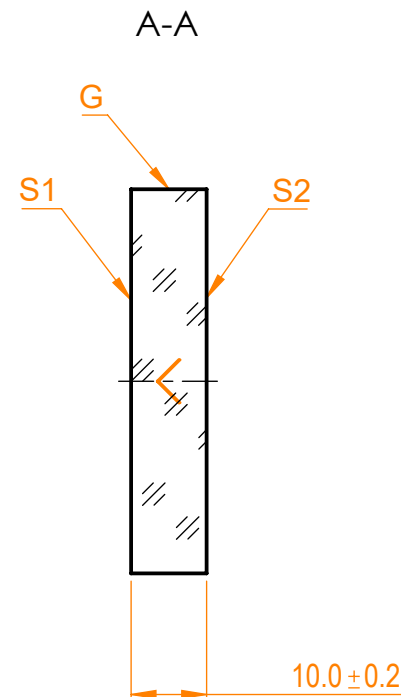
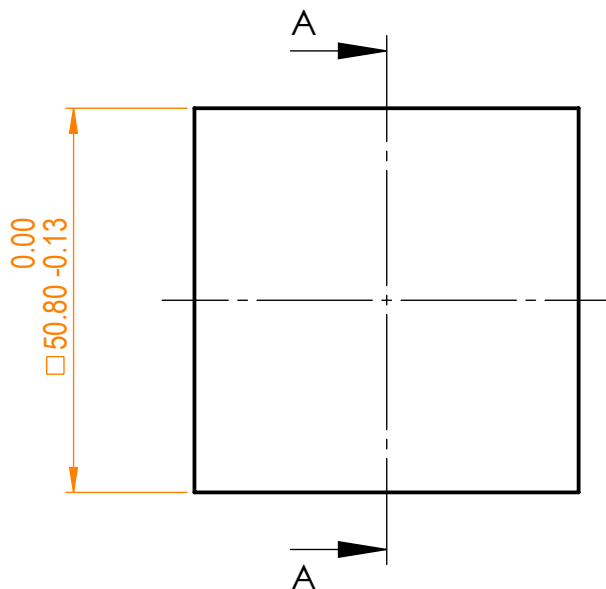


NOTES:


1. Material: N-BK7;
2. G - Fine ground surface;
3. All dimensions are in mm;
4. Wedge: <3 min;
5. Protective chamfers: 0.3 mm x 45°;
6. Laser Induced Damage Threshold:
 - > 0.1 J/cm² at @355nm, 50Hz, 5.7nsec pulses,
 - > 0.25 J/cm² at @1064nm, 50Hz, 11nsec pulses;



Isometric view 1:4



Specifications are subject to change without notice
Dimensions are for reference only

Parameters			 info@eksmaoptics.com www.eksmaoptics.com		N-BK7 pl mirror, (50.8x50.8) mm, T=10 mm				
	S1	S2							
Shape	Plano	Plano	Proprietary The information in this drawing is property of EKSMA Optics. Any reproduction in part or as a whole without the written permission of EKSMA Optics is prohibited.		Name	Date	Part number	Rev.	Scale
Radius of curvature	Infinity	Infinity			A.K.	2020.09.14	095-0315	A	1:1
Surface flatness	λ/10 @633nm	λ @633nm per inch			Approved				
Surface quality	40-20 s/d	80-50 s/d			Drawn	V.S.	2020.09.14		
Clear aperture	>90%	>90%							
Coating	Protected aluminium Ravg>86%@300nm - IR	Uncoated							