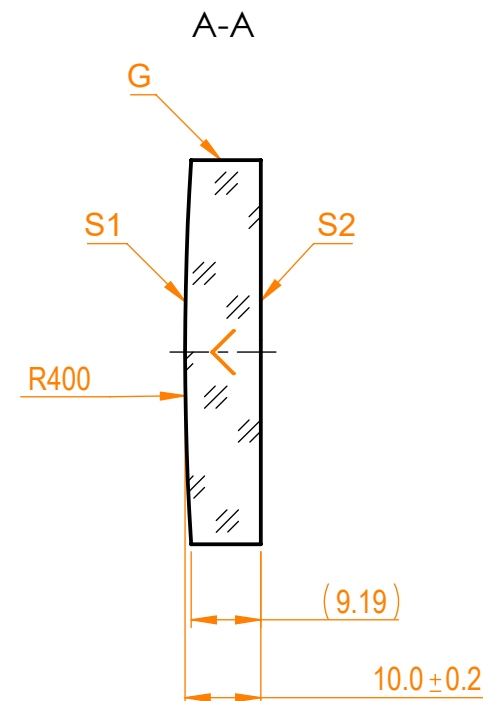
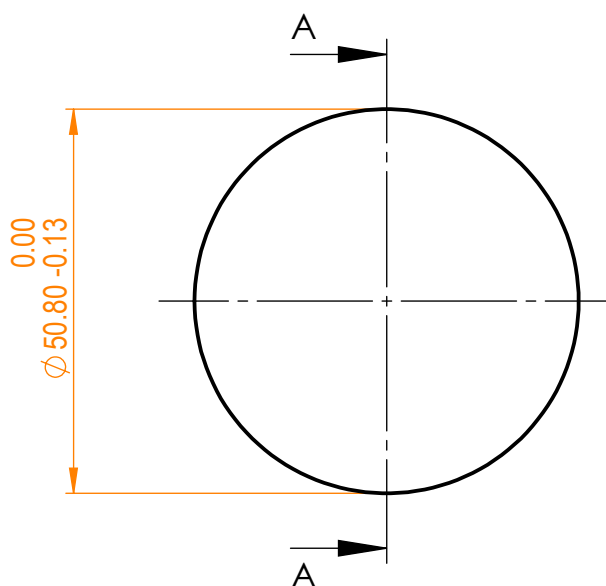


NOTES:

1. Material: N-BK7;
2. G - Fine ground surface;
3. All dimensions are in mm;
4. Wedge: <3 min;
5. Protective chamfers: 0.3 mm x 45°;
6. Laser Induced Damage Threshold: > 1 J/cm² at @1064nm, 50Hz, 11nsec pulses;



Isometric view 1:4



Specifications are subject to change without notice
Dimensions are for reference only

Parameters

| | S1 | S2 |
|---------------------|---------------------------------------|---------------------------|
| Shape | Convex | Plano |
| Radius of curvature | 400 | Infinity |
| Surface flatness | $\lambda/10$ @633nm | λ @633nm per inch |
| Surface quality | 40-20 s/d | 80-50 s/d |
| Clear aperture | >90% | >90% |
| Coating | Protected gold Ravg>98%@900nm - IR | Uncoated |



N-BK7 pl/cx mirror, D=50.8 mm, T=10 mm

| Proprietary | | Name | Date | Part number | Rev. | Scale |
|---|----------|------|------------|---------------|------|-------|
| The information in this drawing is property of EKSMA Optics. Any reproduction in part or as a whole without the written permission of EKSMA Optics is prohibited. | Approved | A.K. | 2020.11.16 | 095-0230R+400 | A | 1:1 |
| | Drawn | V.S. | 2020.11.16 | | | |