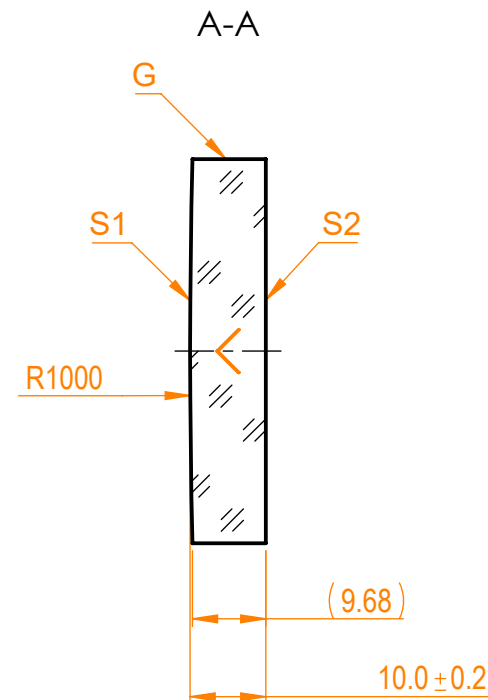
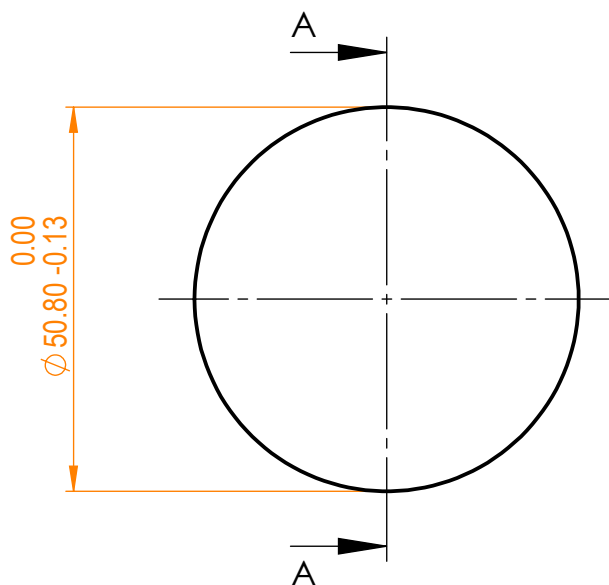


# NOTES:

1. Material: N-BK7;
2. G - Fine ground surface;
3. All dimensions are in mm;
4. Wedge: <3 min;
5. Protective chamfers: 0.3 mm x 45°;
6. Laser Induced Damage Threshold:
  - > 0.1 J/cm<sup>2</sup> at @355nm, 50Hz, 5.7nsec pulses,
  - > 0.25 J/cm<sup>2</sup> at @1064nm, 50Hz, 11nsec pulses;



Isometric view 1:4



Specifications are subject to change without notice  
Dimensions are for reference only

## Parameters

|                     | S1   | S2                        |
|---------------------|--|---------------------------|
| Shape               | Convex                                     | Plano                     |
| Radius of curvature | 1000                                       | Infinity                  |
| Surface flatness    | $\lambda/10$ @633nm                        | $\lambda$ @633nm per inch |
| Surface quality     | 40-20 s/d                                  | 80-50 s/d                 |
| Clear aperture      | >90%                                       | >90%                      |
| Coating             | Protected aluminium<br>Ravg>86%@300nm - IR | Uncoated                  |



N-BK7 pl/cx mirror, D=50.8 mm, T=10 mm

| Proprietary   |          | Name | Date       | Part number    | Rev. | Scale |
|---|----------|------|------------|----------------|------|-------|
| The information in this drawing is property of EKSMA Optics. Any reproduction in part or as a whole without the written permission of EKSMA Optics is prohibited. | Approved | A.K. | 2020.11.16 | 095-0215R+1000 | A    | 1:1   |
|   | Drawn    | V.S. | 2020.11.16 |                |      |       |