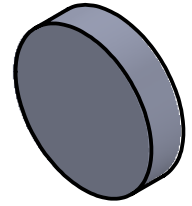
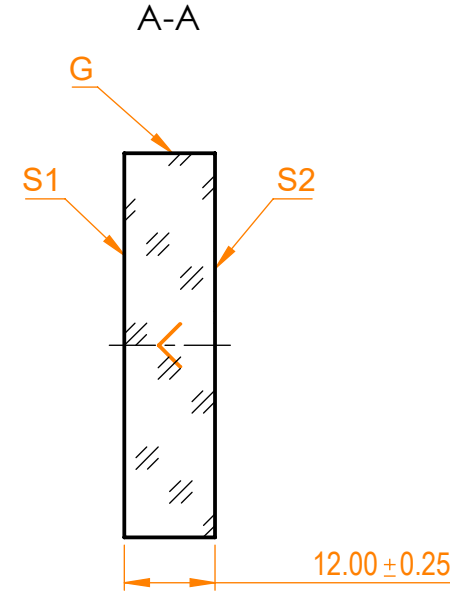
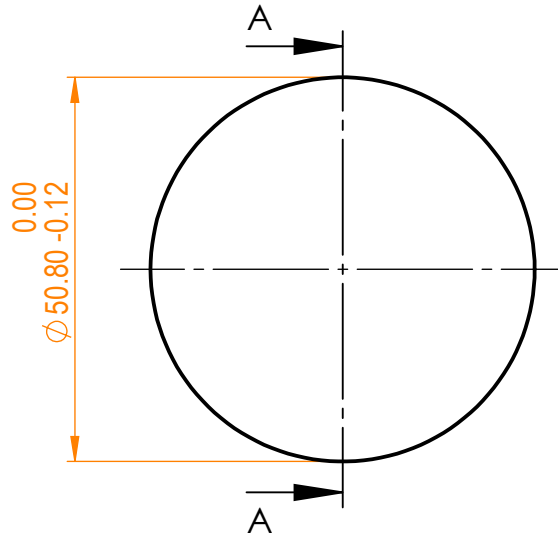


**NOTES:**


1. Material: UVFS;
2. G - Fine ground surface;
3. All dimensions are in mm;
4. Wedge: <3 minutes;
5. Protective chamfers: 0.3 mm x 45°;
6. Laser Induced Damage Threshold: >0.15 J/cm<sup>2</sup> at @800nm, 100Hz, 50fsec pulses;



Isometric view 1:2



Specifications are subject to change without notice  
 Dimensions are for reference only

Parameters				 info@eksmaoptics.com www.eksmaoptics.com		UVFS pl mirror, D=50.8 mm, T=12 mm			
	S1	S2							
Shape	Plano	Plano		Proprietary	Name	Date	Part number	Rev.	Scale
Radius of curvature	Infinity	Infinity			Approved	A.K.	2020.09.09	085-7288T12 HHR	A
Surface flatness	$\lambda/10$ @633nm	$\lambda$ @633nm per inch		The information in this drawing is property of EKSMA Optics. Any reproduction in part or as a whole without the written permission of EKSMA Optics is prohibited.	Drawn	V.S.	2020.09.09		
Surface quality	20-10 s/d	80-50 s/d							
Clear aperture	≥85%	≥85%							
Coating	HR(s+p)/2>99.8%@720-880nm, AOI=45°	Uncoated							