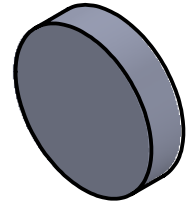
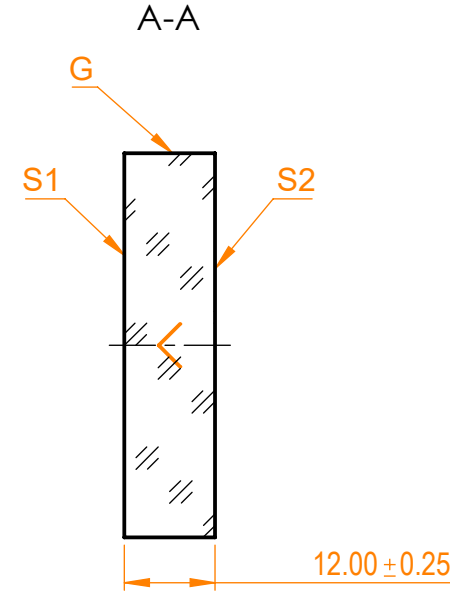
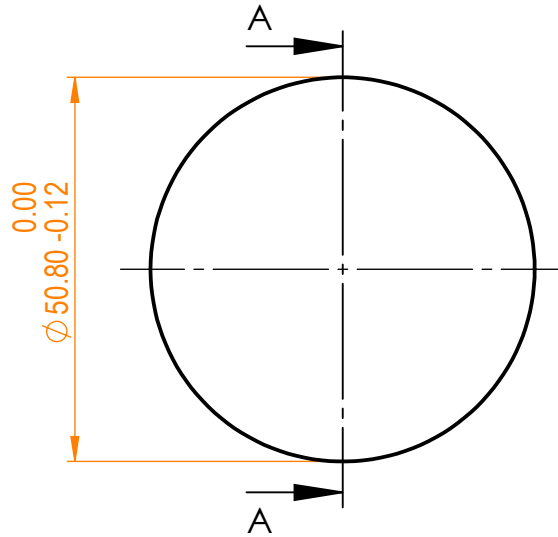


**NOTES:**


1. Material: UVFS;
2. G - Fine ground surface;
3. All dimensions are in mm;
4. Wedge: <3 minutes;
5. Protective chamfers: 0.3 mm x 45°;
6. Laser Induced Damage Threshold: >20 J/cm<sup>2</sup> at @532nm, 100Hz, 10nsec pulses;



Isometric view 1:2



Specifications are subject to change without notice  
 Dimensions are for reference only

Parameters			 info@eksmaoptics.com www.eksmaoptics.com	UVFS pl mirror, D=50.8 mm, T=12 mm					
	S1	S2		Proprietary	Name	Date	Part number	Rev.	Scale
Shape	Plano	Plano			The information in this drawing is property of EK SMA Optics. Any reproduction in part or as a whole without the written permission of EK SMA Optics is prohibited.	A.K.	2020.09.10	045-0530T12 UHHR	A
Radius of curvature	Infinity	Infinity		Approved		V.S.	2020.09.10		
Surface flatness	$\lambda/10$ @633nm	$\lambda$ @633nm per inch	Drawn						
Surface quality	20-10 s/d	80-50 s/d							
Clear aperture	≥85%	≥85%							
Coating	HR <sub>(s+p)</sub> /2>99.9%@532nm, AOI=45°	Uncoated							