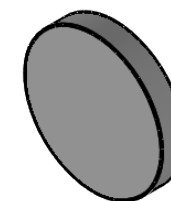
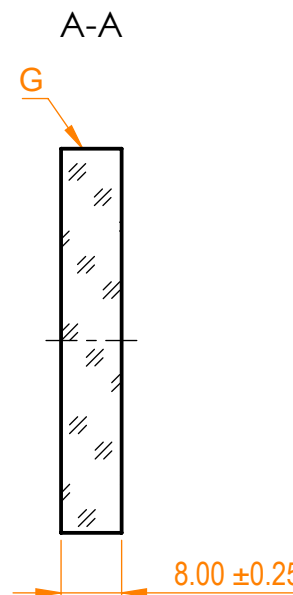
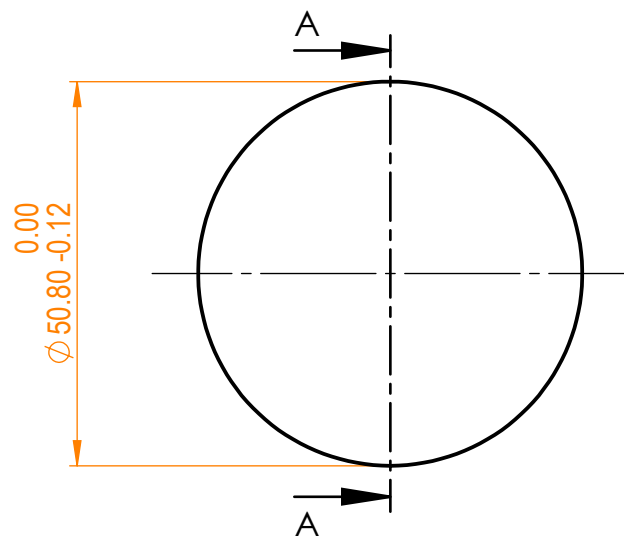


NOTES:

1. Material: UVFS;
2. G - Fine ground surface;
3. All dimensions are in mm;



Isometric view 1:2



Specifications are subject to change without notice  
Dimensions are for reference only

Parameters

Shape	Plano
S1 Surface flatness	$\lambda/10$ @632.8 nm
S1 Surface quality	20-10 s/d
S2 Surface quality	Commercial polish
Clear aperture	$\geq 85\%$
Protective chamfers	0.2 - 0.3 mm x 45°
Wedge	<3 minutes
Coating	HR <sub>(s+p)/2</sub> > 99.8% @ 325nm, AOI=0°



UVFS pl mirror, D=50.8 mm, T=8 mm

Proprietary	Name	Date	Part number	Rev.	Scale
Approved	A.K.	2019.12.18	045-0325-i0	A	1:1
Drawn	A.F.	2019.12.18			