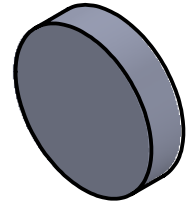
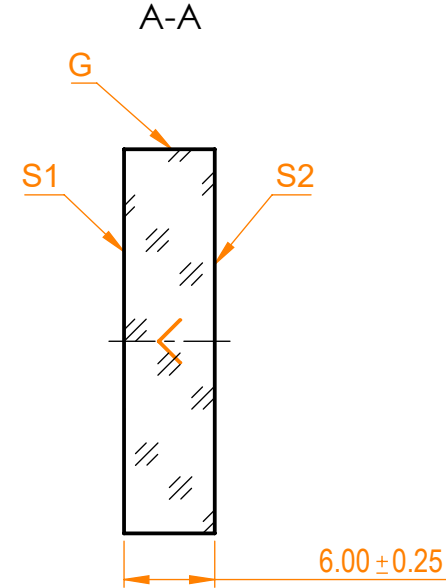
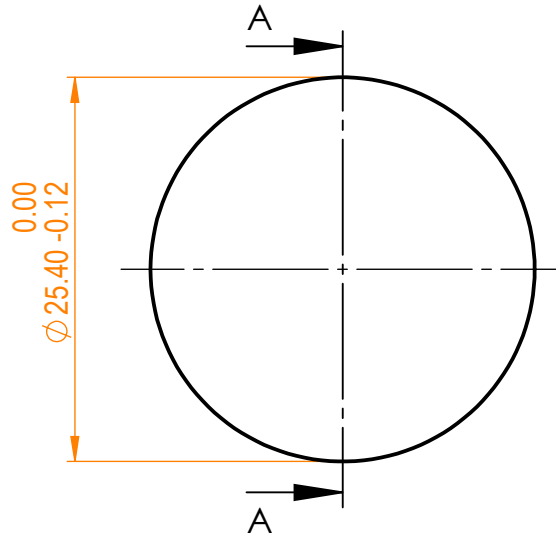


**NOTES:**


1. Material: UVFS;
2. G - Fine ground surface;
3. All dimensions are in mm;
4. Wedge: <3 minutes;
5. Protective chamfers: 0.3 mm x 45°;
6. Laser Induced Damage Threshold: >0.2 J/cm<sup>2</sup> at @800nm, 100Hz, 50fsec pulses;



Isometric view 1:1



Specifications are subject to change without notice  
 Dimensions are for reference only

| Parameters          |                                    |                           | <br>info@eksmaoptics.com<br>www.eksmaoptics.com |          | UVFS pl mirror, D=25.4 mm, T=6 mm |            |             |      |       |
|---------------------|------------------------------------|---------------------------|--|----------|-----------------------------------|------------|-------------|------|-------|
|                     | S1                                 | S2                        |  |          | Name                              | Date       | Part number | Rev. | Scale |
| Shape               | Plano                              | Plano                     | Proprietary  | Approved | A.K.                              | 2020.09.09 | 042-0800HHR | A    | 2:1   |
| Radius of curvature | Infinity                           | Infinity                  |  |          |                                   |            |             |      |       |
| Surface flatness    | $\lambda/10$ @633nm                | $\lambda$ @633nm per inch |  |          |                                   |            |             |      |       |
| Surface quality     | 20-10 s/d                          | 80-50 s/d                 |  |          |                                   |            |             |      |       |
| Clear aperture      | ≥85%                               | ≥85%                      |  |          |                                   |            |             |      |       |
| Coating             | HR(s+p)/2>99.9%@760-840nm, AOI=45° | Uncoated                  |  |          |                                   |            |             |      |       |