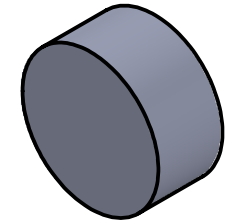
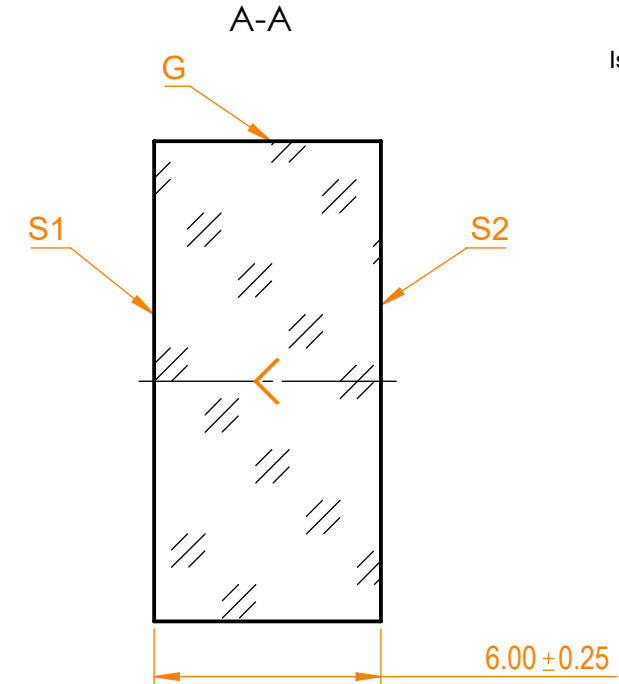
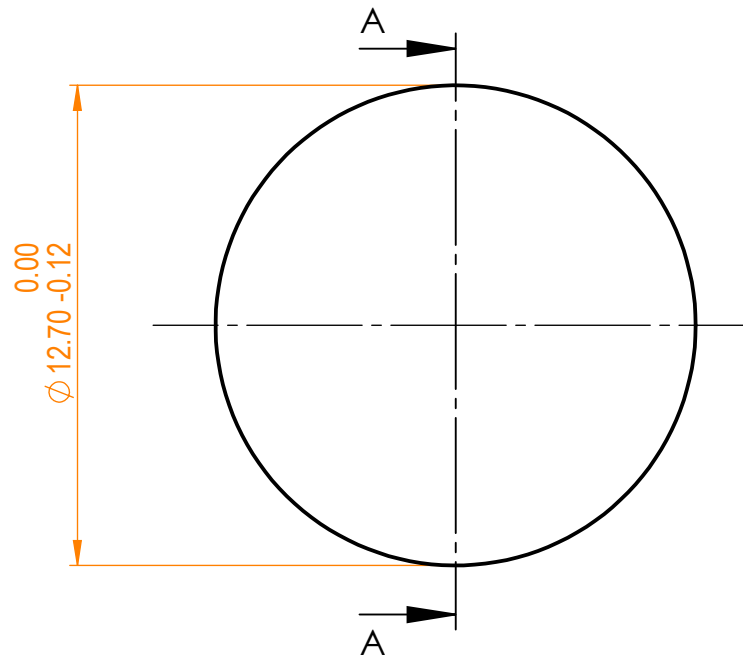


**NOTES:**


1. Material: UVFS;
2. G - Fine ground surface;
3. All dimensions are in mm;
4. Wedge: <3 minutes;
5. Protective chamfers: 0.3 mm x 45°;
6. Laser Induced Damage Threshold: >40 J/cm<sup>2</sup> at @1064nm, 100Hz, 10nsec pulses;



Isometric view 2:1



Specifications are subject to change without notice  
 Dimensions are for reference only

| Parameters          |                                   | S1                        | S2       | <br>UVFS pl mirror, D=12.7 mm, T=6 mm |            |                        |   |     |                                  |
|---------------------|-----------------------------------|---------------------------|----------|--|------------|------------------------|---|-----|----------------------------------|
| Shape               | Plano                             | Plano                     | Plano    |  |            |                        |   |     | Proprietary<br>Approved<br>Drawn |
| Radius of curvature | Infinity                          | Infinity                  | Infinity | A.K.   | 2020.09.10 | 041-1060NT6<br>UHHR-i0 | A | 5:1 |                                  |
| Surface flatness    | $\lambda/10$ @633nm               | $\lambda$ @633nm per inch |          | V.S.   | 2020.09.10 |                        |   |     |                                  |
| Surface quality     | 20-10 s/d                         | 80-50 s/d                 |          |  |            |                        |   |     |                                  |
| Clear aperture      | ≥85%                              | ≥85%                      |          |  |            |                        |   |     |                                  |
| Coating             | HR(s+p)/2>99.9%@1064nm,<br>AOI=0° | Uncoated                  |          |  |            |                        |   |     |                                  |