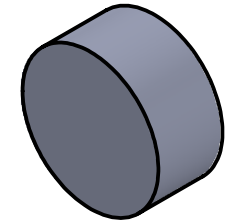
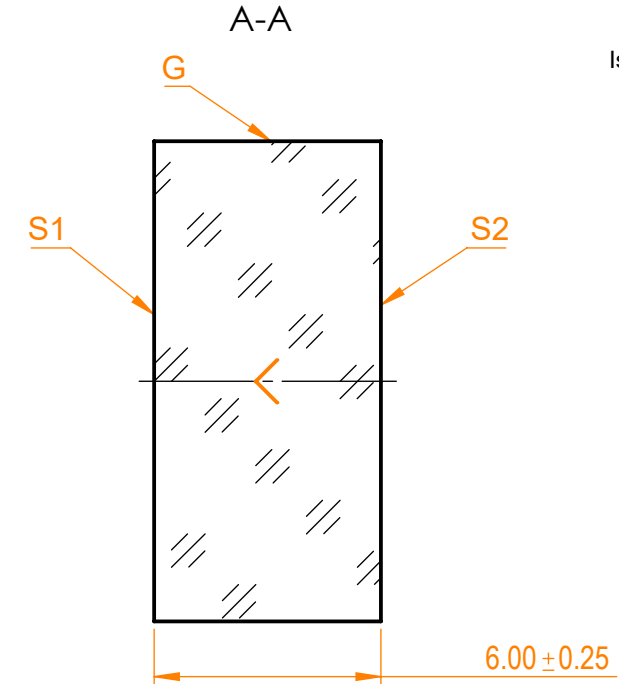
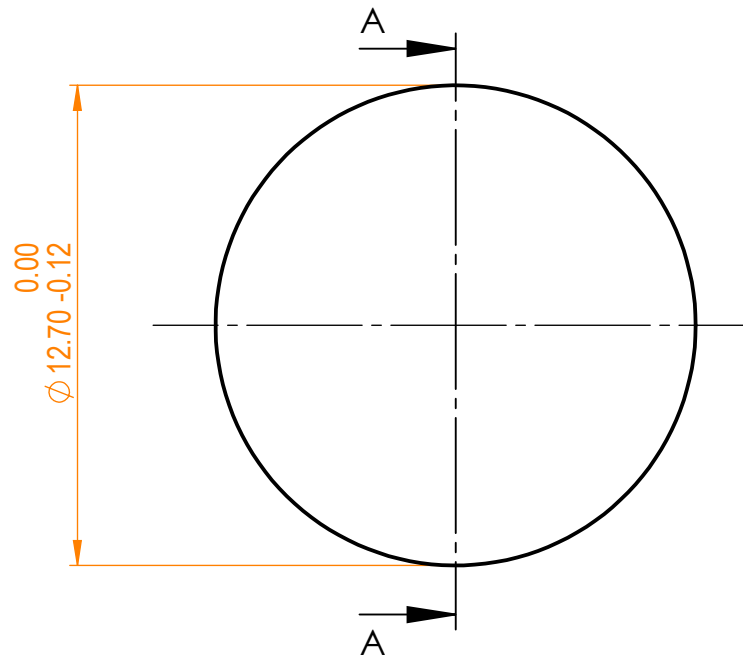


**NOTES:**


1. Material: UVFS;
2. G - Fine ground surface;
3. All dimensions are in mm;
4. Wedge: <3 minutes;
5. Protective chamfers: 0.3 mm x 45°;
6. Laser Induced Damage Threshold: >1.5 J/cm<sup>2</sup> at @1030nm, 20kHz, 10psec pulses;



Isometric view 2:1



Specifications are subject to change without notice  
Dimensions are for reference only

Parameters		S1	S2	 UVFS pl mirror, D=12.7 mm, T=6 mm					
Shape	Radius of curvature	Plano	Plano						
Surface flatness	$\lambda/10$ @633nm	$\lambda$ @633nm per inch		Proprietary Approved Drawn	Name	Date	Part number	Rev.	Scale
Surface quality	20-10 s/d	80-50 s/d			A.K.	2020.09.10	041-1030PHR	A	5:1
Clear aperture	≥85%	≥85%		V.S.	2020.09.10				
Coating	HR <sub>(s+p)/2</sub> >99.9%@1030nm, AOI=45°	Uncoated							