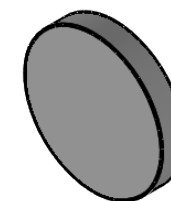
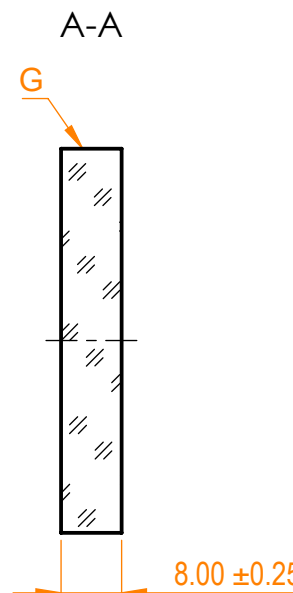
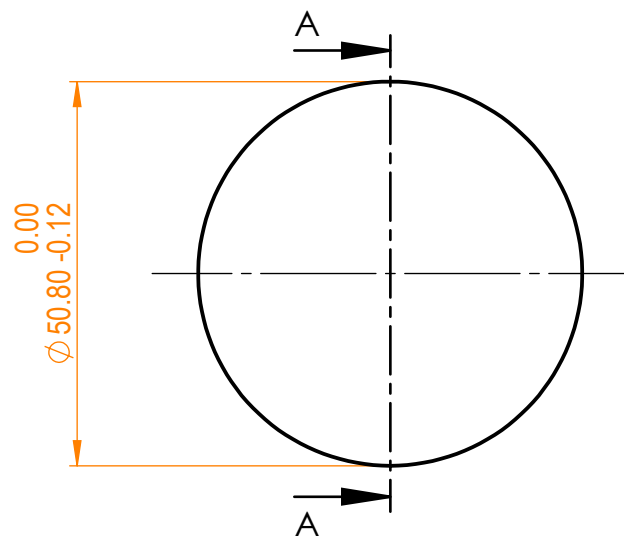


NOTES:

1. Material: BK7;
2. G - Fine ground surface;
3. All dimensions are in mm;



Isometric view 1:2



Specifications are subject to change without notice
Dimensions are for reference only

Parameters

| Shape | Plano |
|---------------------|--------------------------------|
| S1 Surface flatness | $\lambda/10$ @632.8 nm |
| S1 Surface quality | 20-10 s/d |
| S2 Surface quality | Commercial polish |
| Clear aperture | $\geq 85\%$ |
| Protective chamfers | 0.2 - 0.3 mm x 45° |
| Wedge | <3 minutes |
| Coating | HR(s+p)/2>99,5%@852nm, AOI=45° |



BK7 pl mirror, D=50.8 mm, T=8 mm

| Proprietary | | Name | Date | Part number | Rev. | Scale |
|---|----------|------|------------|-------------|------|-------|
| The information in this drawing is property of EKSMA Optics. Any reproduction in part or as a whole without the written permission of EKSMA Optics is prohibited. | Approved | A.K. | 2019.12.18 | 035-0850 | A | 1:1 |
| | Drawn | A.F. | 2019.12.18 | | | |