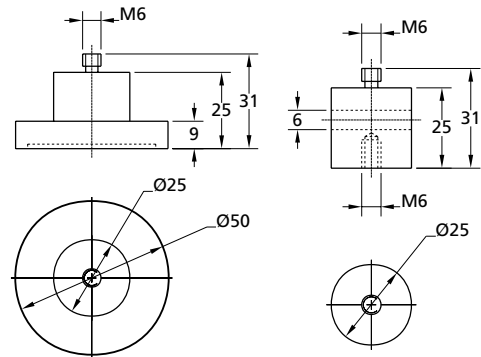


820-0210 • 820-0220 SOLID BASE HEIGHT EXTENDERS



The 820-0210 solid base provides mounting of components at fixed optical axis height. It adds 25 mm height for every component to be mounted on. The 820-0220 height extender adds another 25 mm. After positioning solid base can be reliably fixed to a table with 820-0230-02 or 820-0230-04 clamps. Finish: black anodized aluminium.



Code	Weight, kg	Price, EUR
820-0210	0.06	10.5
820-0220	0.03	7.3

Complementary Products

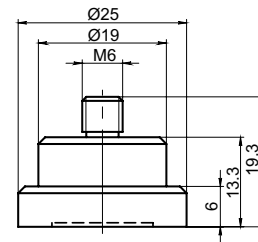
Code	Page
820-0230	8.42

820-0225 ROD HOLDERS BASE ADAPTER



820-0225 Rod Holders Base Adapter can be fixed to 820-0050 Rod Holders transforming them to pedestal-style mount 820-0051 Rod Holders with Base Adapter or fixed to 820-0010 Standard Rod enabling them to be compatible with the 820-0125 Table Clamp.

Material: Stainless Steel.



- Designed to be used with Rod Holders 820-0050

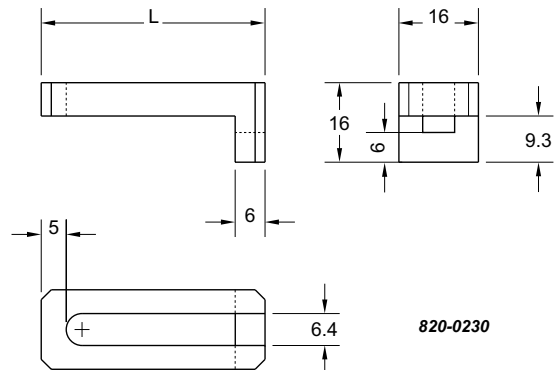
Complementary Products

Code	Page
820-0010	8.33
820-0050	8.34
820-0125	8.37



Code	Weight, kg	Price, EUR
820-0225	0.04	6

820-0230 TABLE CLAMPS



The 820-0230-02 and 820-0230-04 clamps provide fixing of movable bases and other components to a surface with M6 tapped holes. It is useful when direct mounting of components is not practical. Finish: black oxidized steel.

Code	L, mm	Weight, kg	Price, EUR
820-0230-02	45	0.026	6
820-0230-04	60	0.03	8