

840-0040
840-0050

PRECISION AND HIGH STABILITY
ALUMINIUM OPTICS MOUNTS



840-0040-35



840-0050-25

Precision and High Stability Optics Mounts 840-0040 and 840-0050 are universal, durable, and render very stable adjustment.

Independent tilt about two horizontal axes – 6° with 3 arcsec sensitivity.

Linear translation – 5 mm, sensitivity – 1 µm. For translation a third actuator replaces the removable socket and the pivot bearing.

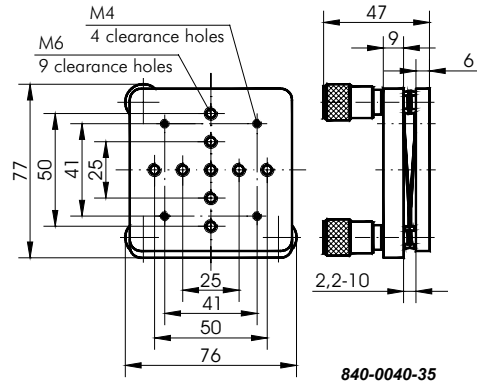
To enhance stability: the platform is preloaded by three special spring blocks; actuators push against hardened steel seats.

The mounts have M6 mounting holes. Mount 840-0050 also has a Ø42 mm clear aperture.

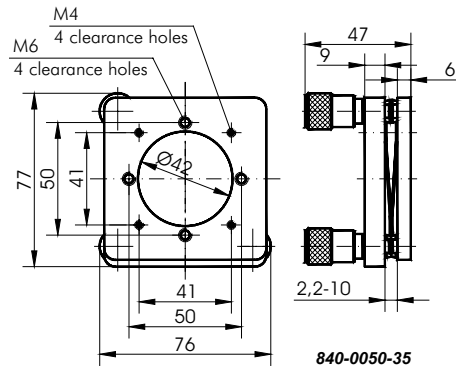
The mounts can be fastened on any mounting post on its M6 tip. Additionally, mount 840-0040 has a hole on its back and can be mounted in horizontal position to be used as a tilt platform.

The base of the stage has three holes M10×1 for adjustment screws of your choice. Standard screws have a pitch of 0.5 mm. For greater sensitivity you may request actuators with 0.35 or 0.25 pitch.

Material: black anodized aluminium.



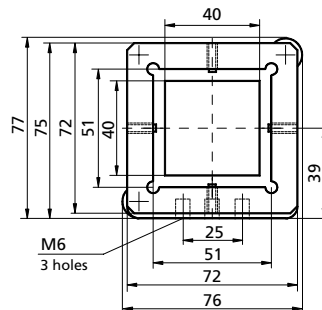
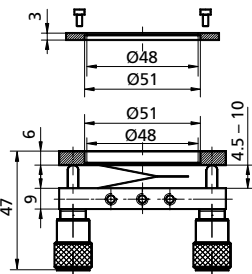
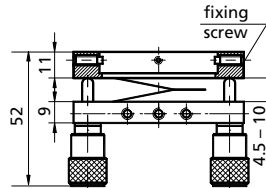
840-0040-35



840-0050-35

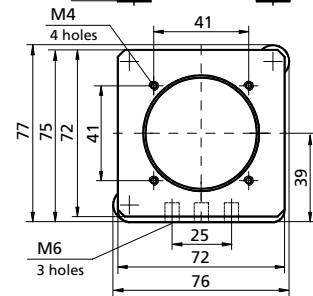
Weight, kg
0.35

Modifications 840-0040 and 840-0050



840-0040-SQ2

With square type frame of 50,8 mm (2 inches)



840-0050-RN2

With ring type frame of 50,8 mm (2 inches)

OPTICAL
TABLES

BRACKETS &
RAILS

BASE MOUNTS &
ACCESSORIES

OPTICAL
MOUNTS

OPTICAL
POSITIONERS

BASE
POSITIONERS

TRANSLATION &
ROTATION STAGES

ADJUSTMENT
SCREWS

MOTORIZED
POSITIONERS

Ordering 840-0040 and 840-0050



840-0040-34

Examples of codes for 840-0040 stages

840-0040-24	with two 870-0030 adjustment screws, 1 ball
840-0040-34	with three 870-0030 adjustment screws
840-0040-S34	made of steel, has three 870-0030 adjustment screws
840-0040-25	with two 870-0060-01 adjustment screws, 1 ball
840-0040-35	with three 870-0060-01 adjustment screws
840-0040-S25	made of steel, has two 870-0060-01 adjustment screws, 1 ball
840-0040-26	with two 870-0070 adjustment screws, 1 ball
840-0040-36	with three 870-0070 adjustment screws
840-0040-27	with two 870-0080-C3 adjustment screws, 1 ball
840-0040-37	with three 870-0080-C3 adjustment screws

See section 870 for optional driving screws (p. 8.138–8.143).

The stage may be fitted with 2 or 3 screws. A variant with 2 adjustment screws has a ball Ø8 as a third base-point. The stage comes with 870-0030 screw as standard. Don't specify this screw in order. If you order the stage with alternative screws, please specify this in order, by appending the screw code name to the stage code.

Code	Price, EUR	Code	Price, EUR
840-0040-24	111	840-0050-24	121
840-0040-25	62	840-0050-25	65
840-0040-26	59	840-0050-26	62
840-0040-27	82	840-0050-27	85
840-0040-34	136	840-0050-34	146
840-0040-35	71	840-0050-35	74
840-0040-36	68	840-0050-36	72
840-0040-37	96	840-0050-37	99

PRECISION KINEMATIC OPTICAL MOUNTS

- Precise and handy two orthogonal angular adjustments
- Stable vertical mounting
- Tilt/tip range 9°
- Various modifications with sensitivity from 10 to 3 arcsec
- M6×0.35 adjustment screws provide precise kinematic control
- Made of black anodized aluminium

Precision Kinematic Optical Mounts are ideally suitable for precise aligning of various optical elements to desired angular orientation. The tilting element is always true-kinematic-registered. The drive screw pushes the alignment mechanism via hardened steel balls. These mounts provide angular range 9° in both orthogonal axes. The Precision Kinematic Optical Mounts are produced of aluminium and can be anodized in the color according to your request.

840-0052

UNIVERSAL MIRROR MOUNT/PLATFORM



The Universal Mirror Mount/Platform 840-0052 is suited for precise adjustments of standard mirrors which can be directly bound to it. The mount may also be used in horizontal position as a tilt table. Then it can be used to align opto-mechanics around two axes. For such mounting the Mount has an M4 hole on its back.

Code	Weight, kg	Price, EUR
840-0052	0.11	55

