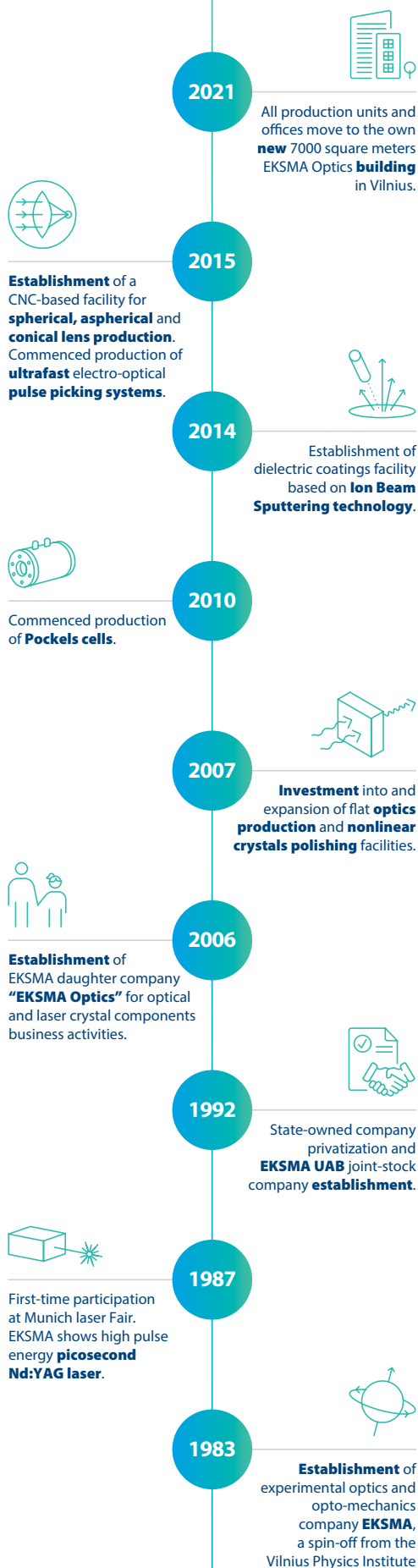


Electro-optics & Laser electronics

2021





EKSMA Optics is a manufacturer of precision laser components, used in high power lasers, laser systems and various other photonic devices and optical instruments. Rooted in laser community and with more than 30 years of experience in lasers and photonic components EKSMA Optics is your partner for enabling photonics innovations, offering fast delivery components tailored to customer applications.

This electro-optical components catalog contains products dedicated to lasers and laser systems manufacturers, integrators, innovators, and scientists. The standard catalog components are available for fast off-the-shelf delivery. We also develop and customize our electro-optical components tailoring the parameters of the particular laser and its applications.

All components provided by EKSMA Optics are subject to performance and quality testing and certification in Quality Control laboratory. Through stringent inspection procedures, quality control assessments and commitment to new advanced technologies, we are continuously improving and delivering exceptional quality.

EKSMA Optics is an ISO 9001:2015 certified company.

Your Partner in Photonics Innovations!



Ordering Information

PRICES

Prices are indicated F.C.A. Vilnius, Lithuania and are exclusive of any taxes, duties or freight. Quantity as well as research application discounts are subject to quote. EKSMA Optics reserves the right to change prices without prior written notice.

PRODUCT DELIVERY TIME

Most of the standard products provided in catalogue are available for fast-off-the shelf delivery. Delivery time of the stock products can be estimated on the website. Estimated product delivery time is displayed on each product page. Search in our e-shop using product code.

If delivery term is indicated as "Request", please add the required items to the shopping cart and choose "Get Official Quotation". Our sales team will contact you soon and provide the estimated delivery time for the shopping cart.

SHIPPING

EKSMA Optics works with the biggest express freight carriers (UPS, DHL, FedEx). Other freight forwarders are available on request.

If not specified by customer, the default freight forwarder is DHL or UPS (depending on the country). Final shipping costs are subject to quote depending on individual order. EKSMA Optics reserves the right to change the prices without prior written notice depending on freight forwarder's pricing. Shipping charges are prepaid and added as a separate item to the invoice.

CERTIFICATE OF ORIGIN

All items shown in this catalogue are of Lithuanian Origin (EU). Certificate of Origin is available under request.

ORDERING

Purchase orders to EKSMA Optics can be placed using our e-shop, by e-mail or by fax. Customs paperwork and fees if any applied must be handled by customers.

COMPANY DETAILS

EKSMA Optics, UAB
Mokslininku St. 11, LT-08412 Vilnius, Lithuania
VAT No.: LT100002802516
Tel: +370 5 272 99 00; Fax: +370 5 272 92 99
info@eksmaoptics.com; www.eksmaoptics.com

PAYMENT OPTIONS

Standard payment is by wire transfer. We also accept payments by major credit cards using PayPal or SEB Bank money transfer systems.

WIRE TRANSFER DETAILS

Account number (IBAN)	LT16 7044 0600 0577 4220
Bank name	AB SEB Bankas
Bank address	Gedimino Ave. 12, LT-01103 Vilnius, LITHUANIA
SWIFT Code	CBVILT2X
Beneficiary	EKSMA Optics UAB

Please note that customer's bank transfer fee associated with payment service should be paid by customer.

RETURN POLICY

30 days customer satisfaction warranty covers all standard products. Please contact EKSMA Optics if you are not satisfied with the product to arrange a refund. EKSMA Optics does not cover any costs associated with shipping.

WARRANTY

All products are guaranteed to be free from defects in material and workmanship for a period of 1 year after delivery. EKSMA Optics does not assume liability from installation, labour or consequential damages.

Table of Contents

POCKELS CELLS	4
KTP/RTP Pockels cells – PCK / PCR	4
KD*P Pockels cells – PC / D-compact / D-mini	5
BBO Pockels cells – PCB	6
Mounting stage for Pockels cells of Ø25.4 mm – PM1	7
Mounting stage for Pockels cells of Ø35 mm – HPR-35	7
POCKELS CELL DRIVERS	8
Cavity dumping & pulse picking	
Pockels cell drivers – DP / DPB / DP-SP	8
High voltage Pockels cell drivers – DPB	10
High voltage Pockels cell drivers – DPBx	12
Low voltage Pockels cell drivers – DP	13
Short pulse Pockels cell drivers – DP-SP	14
High repetition rate Pockels cell drivers – 2DP / DPB3	15
High voltage drivers with fast amplitude modulation – DP-FAM	16
High repetition rate Pockels cell driver for Q-switching of diode pumped lasers – DQ	17
Pockels cells driver for Q-switching of flashlamp pumped lasers – DQF	18
Pockels cell and pockels cell driver selection guide	19
HV POWER SUPPLIES	20
OEM type high voltage power supply – PS	20
Laboratory type high voltage power supply – HVS100	21
High voltage power supply – HV	22
Q-SWITCHING KITS	23
KD*P Pockels cell Q-switching kit – QKD	23
BBO Pockels cell Q-switching kit – QKB	24
ULTRAFAST PULSE PICKING SYSTEMS	25
Digital synchronization and delay pulse generator – pMaster 4.2	25
Pulse picker – MP1	26
Ultrafast pulse picker – UP2	27
LASER DIODE DRIVERS	28
Universal laser diode driver – uniLDD	28
TIMING GENERATORS	32
Timing generator for applications with lasers and laser components – TG10	32
CRYSTAL OVENS	34
Temperature controller with oven – TC2 / CO1	34
Compact oven for nonlinear crystals – HP	35
Oven for nonlinear crystals – CH8	36

Pockels Cells

Pockels cell is an electro-optical modulator for polarization control of the laser beam. The key element of the Pockels cell is an electro-optical crystal, which produces or changes birefringence, when high voltage is applied to it. Induced birefringence or refractive index modification in the material by the electric field is called electro-optic effect or Pockels effect. Electro-optic effect is observed only in non-centrosymmetric crystals.

Typical applications of Pockels cells are Q-switching of laser cavity, laser cavity dumping, pulse picking, light coupling into and from regenerative amplifier, continuous wave laser beam chopping.

KTP / RTP POCKELS CELL – PCK / PCR

Features

- Lower operating voltage required compared to other types of Pockels cells
- Operates at high duty cycles
- Very low piezo-electric resonances
- Standard apertures: 4×4 and 6×6 mm
- Thermally compensated double-crystal configuration

PCK/PCR series Pockels cells developed at EKSMA Optics are based on specially grown high resistivity KTP or RTP crystals. The outstanding feature is possibility to operate KTP/RTP Pockels cells at high duty cycles or even to keep at high voltage for longer.

KTP/RTP Pockels cells can be supplied in standard one inch housing or in open-type OEM mount when small footprint is required.



PCK4 / PCR4

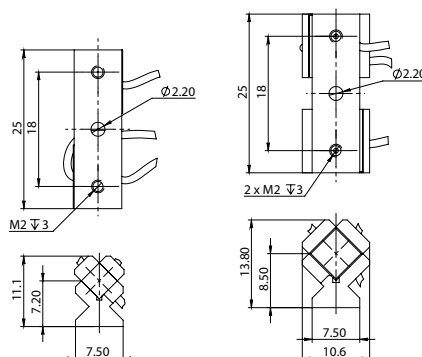
Applications

- Q-switching for high repetition rate lasers 1 kHz – 6 MHz
- Pulse picking of high repetition rate lasers

Specifications

MODEL	PCK4	PCK4-O	PCK6	PCK6-O
Clear aperture, mm	Ø3.5		Ø5.5	
Quantity of crystals	2			
Half-wave voltage (@ 1064 nm), kV DC	< 1.8		< 2.8	
Capacitance, pF (typical)	4		< 6	
Optical transmission	> 98 % at 1064 nm			
Contrast ratio	> 1:500			
Cell size, mm	Ø25.4×42.2	25×11.1×7.5	Ø25.4×42.2	25×13.8×10.6

Specifications are subject to change without advance notice.



PCK4-O drawing

PCK6-O drawing



PCK4-O / PCK6-O

KD*P PCKELS CELLS – PC / D-compact / D-mini

Features

- Low absorption and high deuteration material
- High damage threshold dielectric AR coatings for requested wavelengths
- Operating voltage does not depend on crystal aperture, so large apertures are available
- Suitable for fs applications due to low GVD
- Single-crystal based three terminal design available upon request

Applications

- Q-switching of flashlamp pumped high energy and low repetition rate diode pumped lasers
- Pulse picking
- Laser cavity dumping

KD*P (DKDP) is one of the electro-optical crystals used for Pockels cells. The most popular application of KD*P (DKDP) crystal based Pockels cell is Q-switching of laser cavity. DKDP Pockels cell can be used for lasers emitting in the range of 400 – 1100 nm.

High energy and short output pulse formation during Q-switching of laser cavity process is realized with KD*P (DKDP) Pockels cell in the most of commercially available flashlamp pumped Nd:YAG and Ruby lasers, low repetition rate DPSS lasers like Nd:YAG, Nd:KGW, Nd:YLF, Nd:Glass and other lasers.

Electro-optical KD*P (DKDP) crystals produced by EKSMA Optics have high damage threshold dielectric AR coatings (LIDT > 10 J/cm², 10 ns, 10 Hz, 1064 nm), feature long lifetime without degradation of the coatings and show reliable operation with pulsed high energy lasers.

PC12SR, PC20SR, D-Compact, D-Mini and three terminal DKDP Pockels cells have AR-coated protective windows on both ends. Windows can be flat or wedged or in non-parallel, laser beam shift compensating configuration to eliminate etalon effects in the Pockels cell and laser cavity.

The rectangular shape PC5S, PC5D and PC10S DKDP Pockels cells are provided without protective windows and typically are used in hermetically sealed lasers.

Single-crystal based three terminal DKDP Pockels cell series are designed especially to be controlled by bipolar Pockels cell drivers. Ground connector is located in the center, positive and negative connectors are located on the sides.

EKSMA Optics offers wide range of HV drivers for the Pockels cells and power supplies for the drivers which are presented in the next chapter of this catalogue.



PC12SR

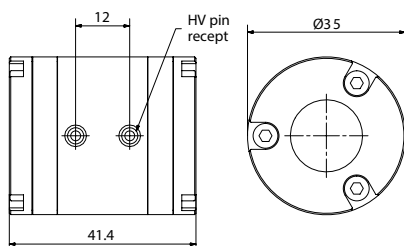
PC14x45SR

PC5S

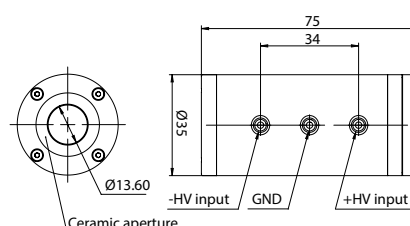
Specifications

MODEL	PC20SR	PC14x45SR	PC12SR	D-compact/12	D-compact/9	D-mini/9	D-mini/8	PC10S	PC5S	PC5D
Clear aperture, mm	Ø 18	Ø 13	Ø 11		Ø 8		Ø 7	9.5 × 9.5	4.5 × 4.5	
Quantity of crystals	1									2
λ/4 @ 1064 nm voltage, kV DC	< 3.4	< ±1.7	< 3.4							< 1.7
Capacitance, pF (typical)	< 10		6				3	4	1.5	3
Optical transmission	> 97 % at 1064 nm									
LIDT of AR coatings	> 1 GW/cm ² (10 J/cm ²), 1064 nm, 10 Hz, 10 ns									
Contrast ratio	> 1:2000									> 1:1000
Cell size, mm	Ø35×51	Ø35×75	Ø35×41.4	Ø25.4×39	Ø25.4×35	Ø19×25.4	Ø19×19	22×18×33	18×14×25	23×16×52

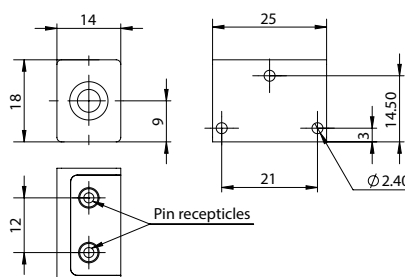
Specifications are subject to change without advance notice.



PC12SR drawing



PC14x45SR drawing



PC5S drawing

BBO POKELS CELLS – PCB

Features

- Minimal piezoelectric ringing
- Very low absorption and suitability for high power laser applications
- Reliable design for operation up to 3 MHz HV pulse repetition rate
- Broad transmission rate from 200 to 2000 nm
- Pockels cell with active cooling available upon request

Applications

- High repetition rate Q-switching
- Pulse picking at up to 3 MHz rate
- Laser cavity dumping
- Pulses coupling into and from regenerative amplifier

BBO Pockels cells are transverse field devices. Low electro-optical coefficient of BBO results in higher operating voltages. The operating voltage is proportional to the ratio of electrode spacing and crystal length. Double crystal design is employed to reduce required voltages and to allow operation in half-wave mode with fast switching times.

Low piezoelectric ringing makes these Pockels cells attractive for the control of high-power and high pulse repetition rate

lasers. Fast switching electronic drivers properly matched to the cell are available for Q-switching, cavity dumping and other applications.

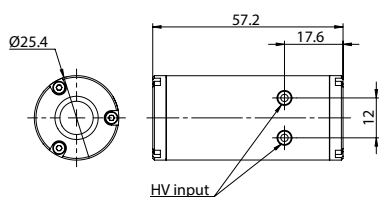
Quatro BBO Pockels cell employs quadruple crystal design with an independent control of two sides, meaning this Pockels cell can be controlled by two synchronized sets of Pockels cell drivers enabling advanced polarization control.



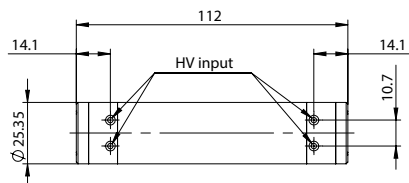
Specifications

MODEL	PCB3S	PCB3D	PCB4S	PCB4D	PCB6.3S	PCB6.3D	PCB4Q
Clear aperture diameter, mm	2.5		3.5		5.8		3.5
Quantity of crystals	1	2	1	2	1	2	4
$\lambda/4$ voltage (@ 1064 nm), kV DC	< 3.5	< 1.8	< 4.6	< 2.3	< 7.5	< 3.8	$2 \times < 1.3$
Capacitance, pF (typical)	4	6	3	6	6	< 8	$2 \times < 6$
Optical transmission	> 98 % at 1064 nm						
LIDT of AR coatings	> 0.5 GW/cm ² (5 J/cm ²), 1064 nm, 10 Hz, 10 ns						
Contrast ratio	> 1:1000	> 1:500	> 1:1000	> 1:500	> 1:1000	> 1:500	> 1:500
Dimensions, mm	Ø25.4×37.2	Ø25.4×57.2	Ø25.4×37.2	Ø25.4×57.2	Ø25.4×42.2	Ø35×68	Ø25.4×112

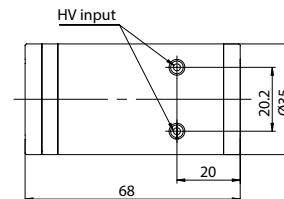
Specifications are subject to changes without advance notice.



PCB3D, PCB4D drawing



PCB4Q drawing



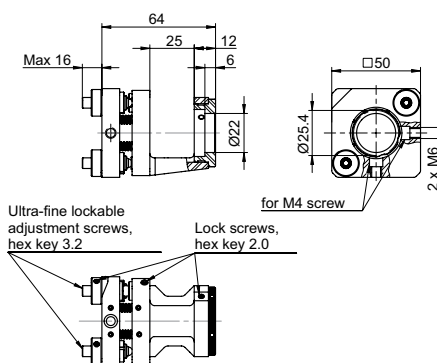
PCB6.3D drawing

MOUNTING STAGE FOR POCKELS CELLS OF Ø25.4 mm – PM1

PM1 series mounting stage is designed for holding and positioning of Ø25.4 mm Pockels cells. The mount has ultra-fine thread lockable adjustment screws.

Specifications

MODEL	PM1
Adjusting angles, tilt and tip, deg	±3.5
Rotation along Z-axis, deg	180
Adjustment screw thread	M6×0.25
Screw sensitivity, µm	0.5

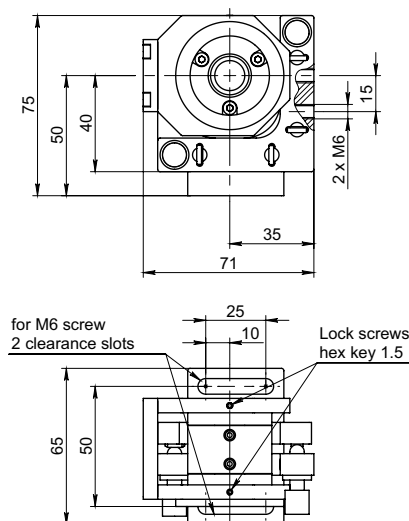


MOUNTING STAGE FOR POCKELS CELLS OF Ø35 mm – HPR-35

HPR series mounting stage is designed for holding and positioning of Ø35 mm Pockels cells. HPR stages with fine or ultra-fine screws are available upon request.

Specifications

MODEL	HPR-35
Adjusting angle along X and Y axis, deg	9
Rotating angle along Z-axis, deg	20
Beam height above breadboard, mm	50
Adjustment screw thread	M6×0.5
Screw sensitivity, µm	1.5



Pockels Cells Drivers



OEM version of DP-SP series Pockels cell driver

Encased version of DPB2 series Pockels cell driver



CAVITY DUMPING & PULSE PICKING POCKELS CELL DRIVERS – DP / DPB / DP-SP

Features

- HV rise/fall time down to 6 ns
- HV pulse amplitude up to 9.8 kV
- Pulse repetition rate up to 6 MHz
- Output pulse jitter <60 ps if trigger pulse rise time <0.5 ns

Pockels cell drivers are designed for a wide range of applications and operating modes – pulse selection, Q switching, cavity dumping, CW beam chopping, burst modes, etc.

Different versions of the drivers are designed for variations of output voltage, repetition rate and rise/fall time of HV pulses. Those three parameters are mutually dependent: higher voltage means longer rise/fall time, and higher repetition rate is limited by output voltage.

Pockels cell drivers are available in two versions: "open frame" which is ideal for OEM manufacturers incorporating drivers in their own laser systems, or "encased" in aluminum housings. Encasing of Pockels cell driver in aluminum housing helps to solve two problems: shields both humans and electronics from high voltage impact from operating Pockels cell driver, and protects driver itself from accidental potentially harmful external contact – ensuring safe

operation of the driver. The encased option is especially handy for researchers and custom product manufacturers who use these drivers during their own systems build-up.

DP/DPBx series Pockels cell drivers operate safely with HV pulse duration from 100 ns to 5 μ s. Moreover, HV pulse duration can be extended to infinity using pulse regeneration technique.

Short pulse drivers (DP-SP series) feature safe operation with HV pulse duration from 15 ns to ~ 1 μ s. However, pulse regeneration technique does not work with short pulse drivers.

Operation control of all our drivers can be made by two trigger (sync) pulses (Fig. 1) or by single trigger pulse (Fig. 2), whereas rising edge of trigger pulse turns ON high voltage to Pockels cell and falling edge of the same trigger pulse turns high voltage OFF. Drivers have switchable option to be controlled by one or two trigger pulses.



Fig. 1. Control timing charts using two pulses trigger control

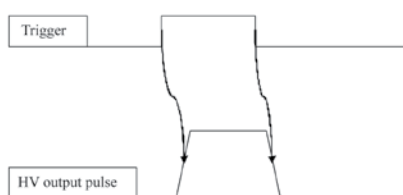


Fig. 2. Control timing charts using single pulse trigger control

Pulse regeneration technique

Gives possibility to extend HV pulse duration. Pulse regeneration technique does not work with DP-SP or DPB series drivers. Pulse regeneration technique diagram is shown in Fig. 3.

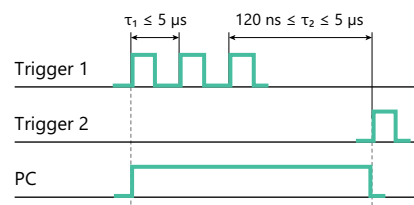
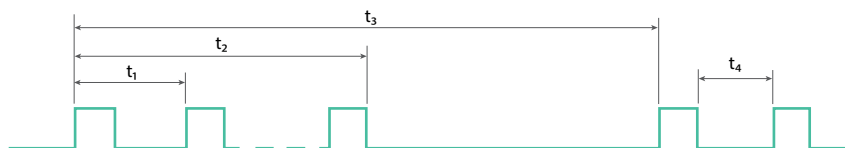


Fig. 3. Principle pulse regeneration diagram

Burst mode operation

Certain laser applications, such as laser material processing, optical metrology and others require for relatively short sequence of high repetition rate of pulses with following pause, i.e. burst mode. All the EKSMA Optics Pockels cell drivers series DP/DPBx, DP-SP and DPB can operate up to 3 MHz bursts by reducing duty cycle and preserving below requirements.

Peak power capacity of HV power supply must be increased for burst operation. Contact EKSMA Optics for details and suggestions.



t_1 – pulse repetition period in burst, should be $1/t_1 \leq 3$ MHz.

t_2 – burst duration.

t_3 – burst packet repetition period.

t_4 – minimal pause between two HV pulses, should be ≥ 150 ns for most of the drivers.

Duty cycle is determined as $D = t_2/t_3$, should be $D \leq F * t_1$.

Here F – maximal repetition rate specified for the driver.

General specifications of Pockels cell drivers

DRIVER SERIES	DP/DPBx	DP-SP	DPB
Minimal HV pulse duration (FWHM)	100 ns	15 ns	30 ns
Maximal HV operation voltage	up to 7.2 kV	up to 3.6 kV	up to 9.8 kV
Maximal HV pulse repetition rate	6 MHz	600 kHz	10 kHz
HV pulse duration extension using pulse regeneration technique	Yes	No	
Triggering pulse duration requirement (For two-pulses triggering mode only)	≥20 ns		
Triggering pulse amplitude requirement	3.5 – 5 V (50 Ω)		
Triggering pulse rise & fall time requirement	≤ 10 ns	≤ 5 ns	≤ 20 ns
Maximal length of leads to Pockels cell	10 cm		
HV pulse delay	25 ns	30 ns	

Specifications are given for Pockels cells with capacity < 6 pF. Not all combinations of parameters are possible at the same time. Specifications are subject to change without advance notice.

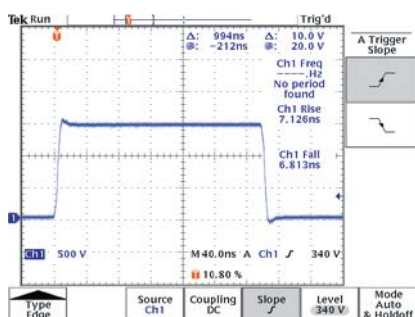


Fig. 5. Typical output pulse shape

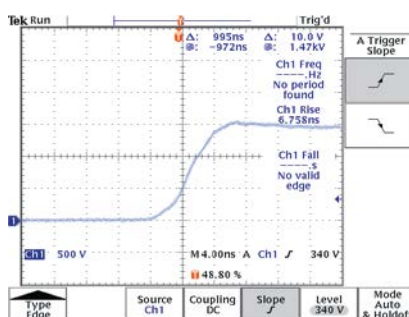


Fig. 6. Typical rising edge of output pulse

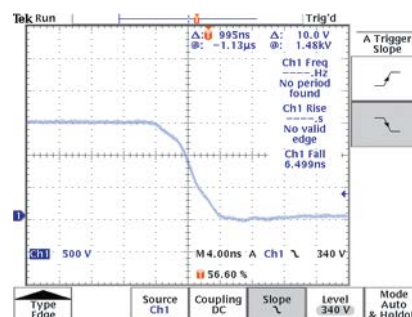
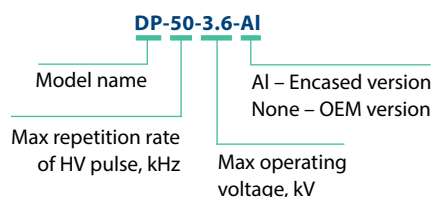


Fig. 7. Typical falling edge of output pulse

Ordering / Part number information

Please provide following information about the driver:

- Operating voltage
- Repetition rate
- HV Pulse duration (range)
- Capacitance of Pockels cell
- OEM or Encased version



HIGH VOLTAGE POCKELS CELL DRIVERS – DPB

Features

- HV pulse amplitude up to 9.8 kV
- HV pulse amplitude doubling layout
- Repetition rate up to 10 kHz
- Easy integration with HV power supply
- Easy mounting on optical breadboard



OEM version of DPB series Pockels cell driver mounted with HV power supply



Encased version of DPB series Pockels cell driver with HV power supply mounted inside

Configuration samples of DPB series drivers

CATALOGUE NUMBER OF DRIVER	DPB-10-4.2 DPB-10-4.2-AI	DPB-5-5.5 DPB-5-5.5-AI	DPB-3-8.6 DPB-3-8.6-AI	DPB-2.5-9.8 DPB-2.5-9.8-AI
Maximal HV operation voltage	4.2 kV	5.5 kV	8.5 kV	9.8 kV
Output polarity	bipolar			
HV pulse rise time, typical	6 ns	7 ns	10.5 ns	12 ns
HV pulse fall time, typical	6 ns	7 ns	9.5 ns	10.5 ns
HV pulse duration	30...3000 ns		35...2000 ns	
Maximal HV pulse repetition rate	10 kHz	5 kHz	3 kHz	2.5 kHz
HV pulse delay	30 ns			
Requirement for external triggering pulse amplitude	3.5...5 V (50 Ω load)			
Requirement for external triggering pulse rise time	< 5 ns			
Requirement for external triggering pulse duration	See Fig. 8 for control by 1 pulse, see Fig. 9 for control by 2 pulses			
External powering requirements:				
Low voltage DC supply	15 – 25 V, 150 mA (0.5 A inrush current)		23...25 V, 150 mA	
HV power supply	2.1 kV, 5 W	2.8 kV, 5W	4.4 kV, 5W	5.0 kV, 5W
DC Connectors	Molex Micro-Fit 3.0			
Dimensions (L x W x H):				
Driver board	135 × 65 × 30 mm		135 × 75 × 30 mm	
Driver board mounted with PS-5 power supply	See Fig. 10		See Fig. 11	
Encased driver with PS-5 power supply mounted inside	See Fig. 12		See Fig. 13	

Power consumption for 6 pF load. Voltage or repetition rate derating is necessary if capacitance of your Pockels cell is higher. Contact vendor for details.

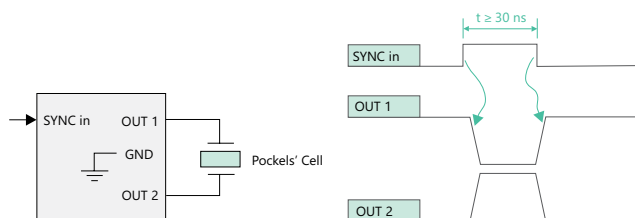


Fig. 8. Diagram of pockels cell connection to driver and timing charts of driver controlled by 1 sync pulse

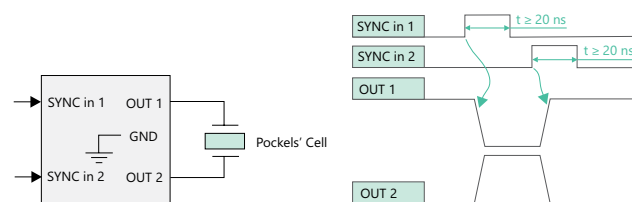


Fig. 9. Diagram of pockels cell connection to driver and timing charts of driver controlled by 2 sync pulses

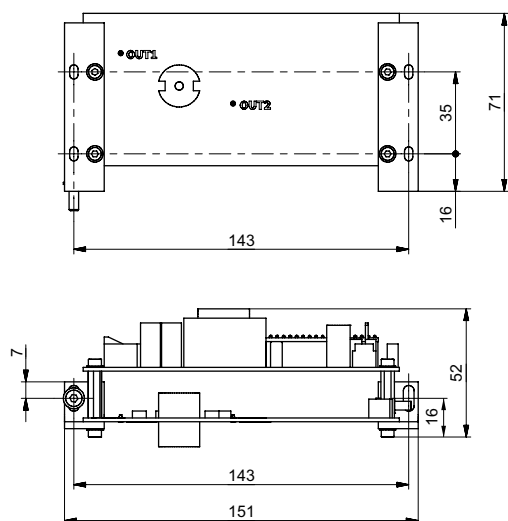


Fig. 10. Outline drawing of OEM version DPB-10 and DPB-5 drivers with PS-5 power supply

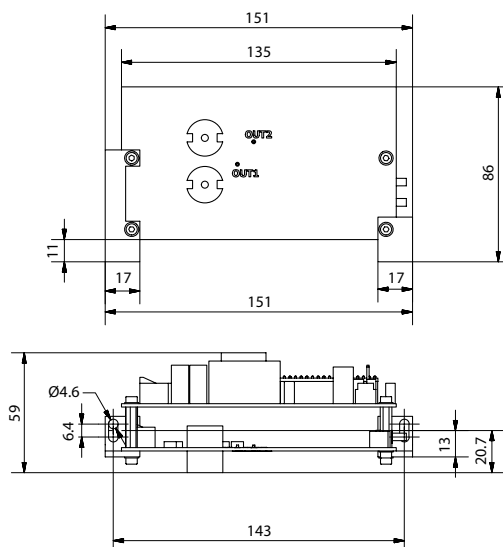


Fig. 11. Outline drawing of OEM version DPB-3 and DPB-2.5 drivers with PS-5 power supply

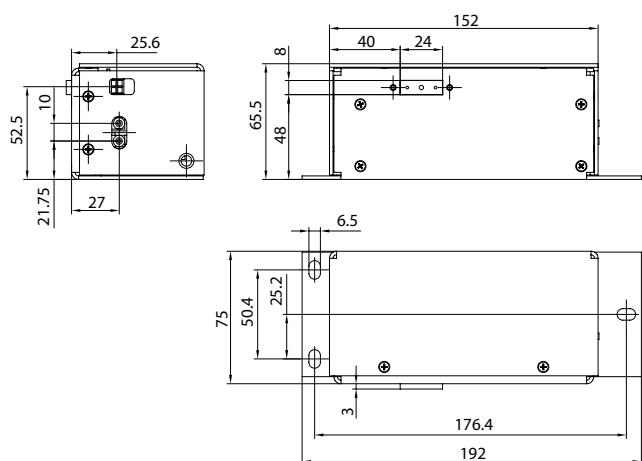


Fig. 12. Outline drawing of encased version DPB-10 and DPB-5 drivers with PS-5 power supply

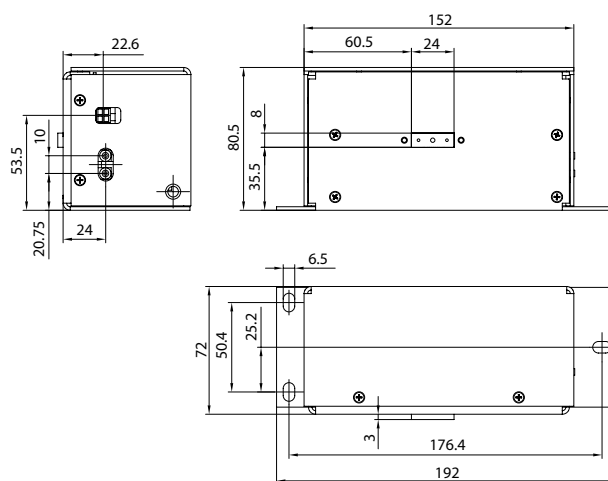


Fig. 13. Outline drawing of encased version DPB-3 and DPB-2.5 drivers with PS-5 power supply

HIGH VOLTAGE POCKELS CELL DRIVERS – DPBx

Features

- HV pulse amplitude up to 7.2 kV
- Repetition rate up to 500 kHz
- HV pulse duration extension using pulse regeneration technique
- OEM version available upon request



Encased version of DPB2 series Pockels cell driver

Configuration samples of DPBx series drivers

CATALOGUE NUMBER OF DRIVER	DPB1-350-4-AI	DPB1-300-4.6-AI	DPB1-250-5.2-AI	DPB2-250-7.0-AI	DPB3-500-7.2-AI
Maximal HV operating voltage	4.0 kV	4.6 kV	5.2 kV	7.0 kV	7.2 kV
Maximal HV repetition rate	350 kHz	300 kHz	250 kHz	250 kHz	500 kHz
Pulse duration	100 – 5000 ns				
HV pulse rise time, typical	< 7.5 ns	< 8 ns	< 8.5 ns	< 9.5 ns	< 10 ns
HV pulse fall time, typical	< 7.5 ns	< 8 ns	< 8.5 ns	< 9.5 ns	< 10 ns
Output polarity	Bipolar				
HV power consumption	< 100 W	< 100 W	< 100 W	< 200 W	< 375 W
24 V power consumption	< 5 W	< 4 W	< 3 W	< 9 W	< 7 W
Recommended HV power supply model	PS2-60 or HVS100-2x60			HV-2x200	
Dimensions	See Fig. 14			See Fig. 15	See Fig. 19
Cooling	Water				

Driver needs to be mounted on heatsink unless it is cooled by water. Driver's base plate temperature needs to be lower than 35 °C in all regimes of operation. Power consumption for 6 pF load. Voltage or repetition rate derating is necessary if capacitance of your Pockels cell is higher. Contact vendor for details.

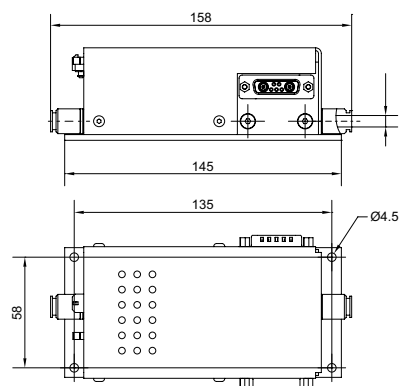


Fig. 14. Outline drawing of encased version DPB1 series Pockels cell drivers

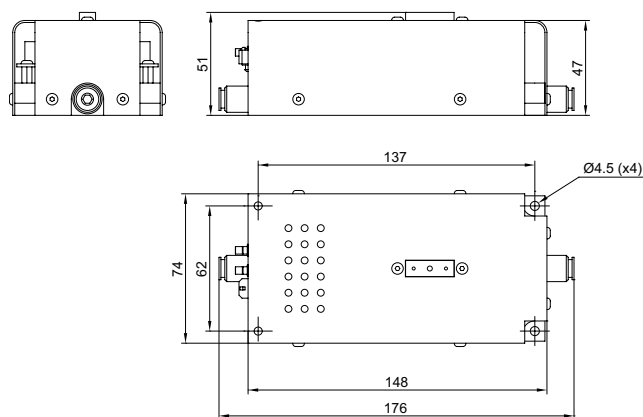


Fig. 15. Outline drawing of encased version DPB2 series Pockels cell drivers

LOW VOLTAGE PCKELS CELL DRIVERS – DP

Features

- HV pulse amplitude up to 3.6 kV
- Repetition rate up to 2 MHz
- HV pulse duration extension using pulse regeneration technique
- Alternative aluminum case option featuring conductive cooling possibility and relocated water and HV output connectors
- OEM version available upon request



Standard of DP/DP-SP series Pockels cell driver

Configuration samples of DP series drivers

CATALOGUE NUMBER OF DRIVER	DP-50-3.6-AI	DP-250-3.6-AI	DP-500-2.6-AI	DP-1000-1.8-AI	DP-2000-1.5-AI
Maximal HV operating voltage	3.6 kV	3.6 kV	2.6 kV	1.8 kV	1.5 kV
Maximal HV repetition rate	50 kHz	250 kHz	500 kHz	1000 kHz	2000 kHz
Pulse duration	100 – 5000 ns				
HV pulse rise time, typical	< 7 ns	< 7 ns	< 6.5 ns	< 6 ns	< 7 ns
HV pulse fall time, typical	< 7 ns	< 7 ns	< 6.5 ns	< 6 ns	< 7 ns
Output polarity	Positive				
HV power consumption	< 20 W	< 75 W	< 90 W	< 80 W	< 120 W
24 V power consumption	< 1 W	< 4 W	< 6 W	< 9 W	< 12 W
Recommended HV power supply model	PS-40 or HVS100-40	PS-80 or HVS100-80	PS-120 or HVS100-120	PS-80 or HVS100-80	PS-120 or HVS-120
Dimensions	Standard - see Fig. 16, alternative – see Fig. 17 ¹⁾				
Cooling	Water ²⁾				

¹⁾ If alternative aluminum case is required, please add note “option 1” when ordering, for e.g., “Pockels cell driver DP-250-3.6-AI option 1”.

²⁾ Standard aluminum case is suitable for water cooling. Alternative aluminum case (option 1) is suitable for both, conductive and water cooling.

Driver needs to be mounted on heatsink unless it is cooled by water. Driver's base plate temperature needs to be lower than 35 °C in all regimes of operation. Power consumption for 6 pF load. Voltage or repetition rate derating is necessary if capacitance of your Pockels cell is higher. Contact vendor for details.

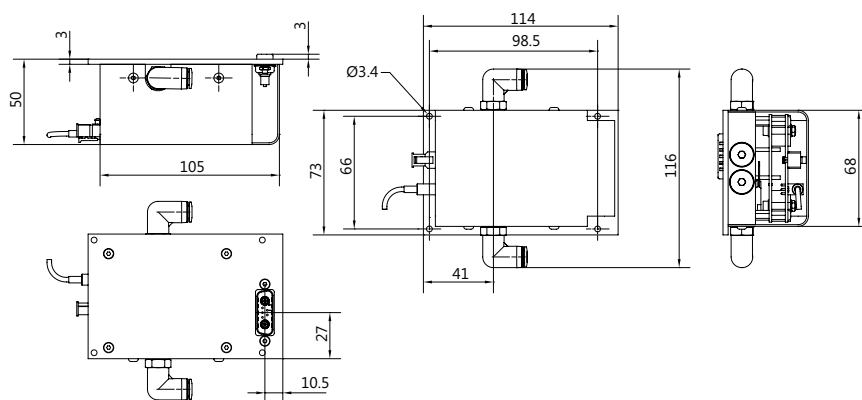


Fig. 16. Outline drawing of standard encased version DP/DP-SP series Pockels cell drivers

SHORT PULSE POCKELS CELL DRIVERS – DP-SP

Features

- HV pulse amplitude up to 3.6 kV
- Repetition rate up to 1 MHz
- HV pulse duration down to 15 ns
- Short circuit protection at driver output
- Driver pad overheat sensor stops operation when overheated
- Overheat optocoupled output signal
- LED for error indication (overheat and short circuit)
- Alternative aluminum case option featuring conductive cooling possibility and relocated water and HV output connectors
- OEM version available upon request

Configuration samples of DP-SP series drivers

CATALOGUE NUMBER OF DRIVER	DP-SP-50-3.6-AI	DP-SP-250-3.6-AI	DP-SP-500-2.6-AI	DP-SP-1000-1.8-AI
Maximal/minimal HV operating voltage	3.6 kV / 1.8 kV	3.6 kV / 1.8 kV	2.6 kV / 1.3 kV	1.8 kV / 0.9 kV
Maximal HV repetition rate	50 kHz	250 kHz	500 kHz	1000 kHz
Pulse duration	15 – 5000 ns	15 – 1250 ns	15 – 500 ns	15 – 250 ns
HV pulse rise time, typical	< 7 ns	< 7 ns	< 6.5 ns	< 6 ns
HV pulse fall time, typical	< 7 ns	< 7 ns	< 6.5 ns	< 6 ns
Output polarity	Positive			
HV power consumption	< 20 W	< 75 W	< 90 W	< 80 W
12 V / 24 V power consumption	1 W	4 W	< 6 W	9 W
Recommended HV power supply model	PS-40 or HVS100-40	PS-80 or HVS100-80	PS-120 or HVS100-120	PS-80 or HVS100-80
Dimensions	Standard - see Fig. 16, alternative – see Fig. 17 ¹⁾			
Cooling	Water ²⁾			

¹⁾ If alternative aluminum case is required, please add note "option 1" when ordering, for e.g., "Pockels cell driver DP-SP-250-3.6-AI option 1".

²⁾ Standard aluminum case is suitable for water cooling. Alternative aluminum case (option 1) is suitable for both, conductive and water cooling.

Driver needs to be mounted on heatsink unless it is cooled by water. Driver's base plate temperature needs to be lower than 35 °C in all regimes of operation. Power consumption for 6 pF load. Voltage or repetition rate derating is necessary if capacitance of your Pockels cell is higher. Contact vendor for details.

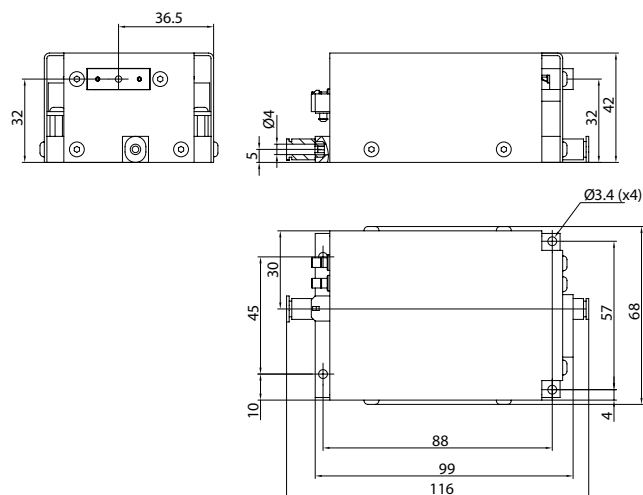


Fig. 17. Outline drawing of alternative encased version DP/DP-SP series Pockels cell drivers with relocated water and HV output connectors (option 1)

HIGH REPETITION RATE POCKELS CELL DRIVERS – 2DP / DPB3

Features

- HV pulse amplitude up to 3.1 kV
- Repetition rate up to 6 MHz
- HV pulse duration down to <1 ns
- HV pulse duration extension using pulse regeneration technique
- OEM version available upon request



Encased version of DPB3 series
Pockels cell driver

CATALOGUE NUMBER OF DRIVER	2DP-1000- 2.4-AI	2DP-2000- 1.6-AI	DPB3-2500- 3.1-AI	DPB3-3000- 2.6-AI	2DPB3-4000- 1.7-AI	2DPB3-6000- 1.3-AI
Maximal HV operating voltage	2.4 kV	1.6 kV	3.1 kV	2.6 kV	1.7 kV	1.3 kV
Maximal HV repetition rate	1000 kHz	2000 kHz	2500 kHz	3000 kHz	4000 kHz	6000 kHz
Pulse duration	0 – 5000 ns		100 – 5000 ns		0 – 5000 ns	
HV pulse rise time, typical	< 6.5 ns	< 6 ns	< 9.5 ns	< 8.5 ns	< 10.5 ns	< 8.5 ns
HV fall rise time, typical	< 6.5 ns	< 6 ns	< 9.5 ns	< 8.5 ns	< 10.5 ns	< 8.5 ns
Output polarity	Positive		Bipolar		Positive	
HV power consumption	< 160 W	< 160 W	< 360 W	< 325 W	< 360 W	< 330 W
24 V power consumption	< 14 W	< 18 W	< 10 W	< 10 W	< 6 W	< 10 W
Recommended HV power supply model	HV-200 or HVS100-2x120		HV-2x200		HV-400	
Dimensions	See Fig. 18		See Fig. 19			
Cooling	Water					

Driver needs to be mounted on heatsink unless it is cooled by water. Driver's base plate temperature needs to be lower than 35 °C in all regimes of operation. Power consumption for 6 pF load. Voltage or repetition rate derating is necessary if capacitance of your Pockels cell is higher. Contact vendor for details.

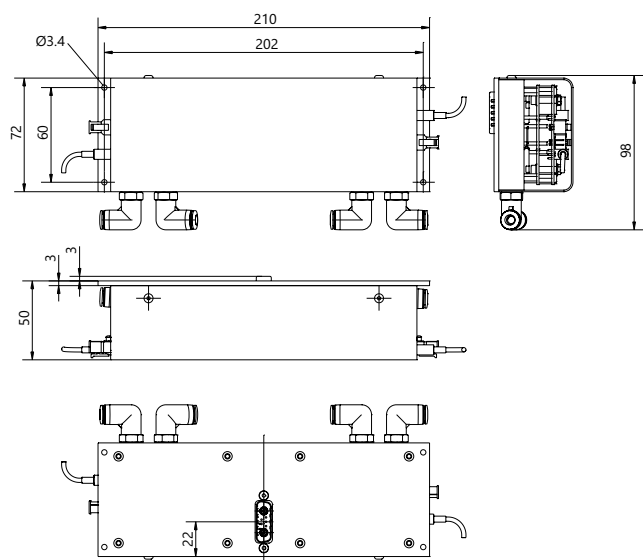


Fig. 18. Outline drawing of encased version
2DP series Pockels cell drivers

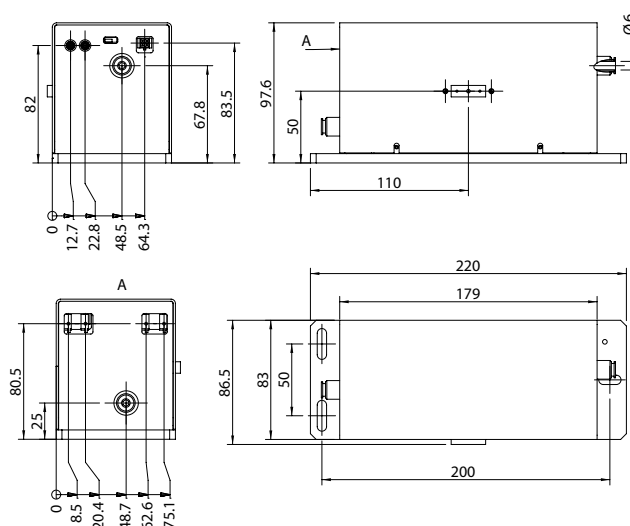


Fig. 19. Outline drawing of encased version
2DPB3/DPB3 series Pockels cell driver

HIGH VOLTAGE DRIVERS WITH FAST AMPLITUDE MODULATION – DP-FAM

Features

- HV pulse repetition rate up to 500 kHz
- Fast amplitude modulation of HV pulses
- Output HV pulse amplitude ranges from 0.1 kV to 2.5 kV

DP-FAM series drivers allow to control the amplitude of each HV output pulse with specific user-defined amplitude levels. The control is realized by one or two trigger-sync pulses and analog signal for amplitude modulation (HV program).



DP-FAM Pockels cell driver

Configuration samples of DP-FAM series encased drivers

CATALOGUE NUMBER OF DRIVER		DP-FAM-250-2.5-AI	DP-FAM-500-2.5-AI
HV operation voltage range		0.1 - 2.5 kV	
HV program input signal range		0.1 - 4.9 V	
Maximal HV repetition rate		250 kHz	500 kHz
HV pulse duration		70 – 3000 ns	70 – 1000 ns
HV pulse rise time, typical ¹⁾		< 26 ns	
HV fall time, typical ¹⁾		< 13 ns	
Output polarity		positive	
External trigger pulse requirements	Amplitude on 50 Ω	3.5 – 5 V	
	Rise/fall time	< 10 ns	
HV power consumption		60 W	120 W
24 VDC power consumption		< 12 W	
Recommended HV power supply model		PS-80-2.6 (OEM type) HVS100-80-2.6 (lab type)	PS-120-2.6 (OEM type) HVS100-120-2.6 (lab type)
Dimensions		139 × 69 × 57 mm (Fig. 20)	
Cooling ²⁾		conductive or water	
Control interface ³⁾		CAN	

¹⁾ All specifications are given for 6 pF Pockels cell load.

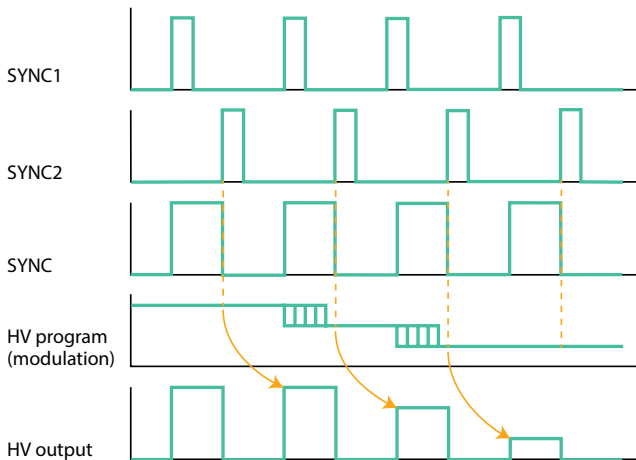
²⁾ Heat sink temperature must not exceed 35 °C (95 °F) in all regimes of operation.

³⁾ Requires USB-CAN converter for computer control that is sold separately.



Example of driver operation.

Green trace – modulated analog input signal, purple trace – trigger signal SYNC (single pulse control mode), yellow trace – HV pulse.



Operation timing charts.

SYNC1 and SYNC2 are used for 2-pulses control operation mode. HV program input amplitude is readout at SYNC2 rising edge and is used to set HV output amplitude for next HV output pulse which is started with SYNC1 rising edge. SYNC is used for single pulse control mode. HV program input amplitude is readout at SYNC falling edge and is used to set HV output amplitude for next HV output pulse which is started with SYNC rising edge.

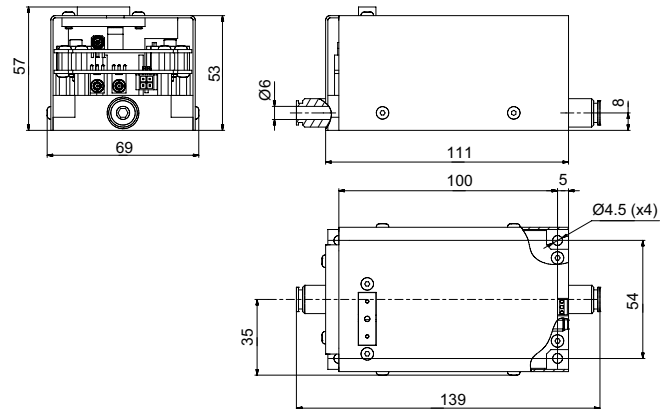


Fig. 20. Outline drawing of DP-FAM series drivers.

HIGH REPETITION RATE POCKELS CELL DRIVER FOR Q-SWITCHING OF DIODE PUMPED LASERS – DQ

Features

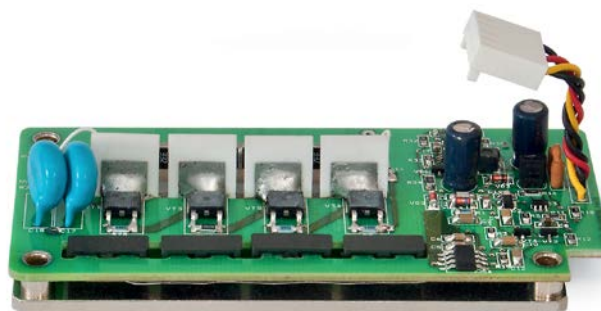
- Pulse repetition rate up to 100 kHz
- Fast HV rise time <7 ns for 4 kV pulse
- HV pulse amplitude up to 4 kV

DQ series high repetition rate Pockels cell driver has been designed for use in mode-locked lasers for cavity dumping or for cavity Q-switching of solid-state nanosecond lasers. Fast HV edge ensures excellent pre- and post-pulse contrast.

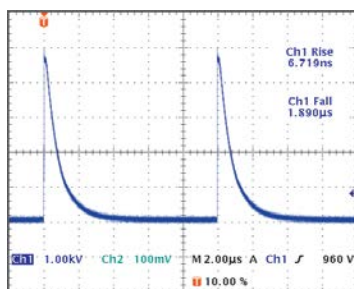
Ability to operate at high pulse repetition rates makes this driver perfect fit for most of diode-pumped nanosecond lasers. For pulse repetition rates up to 10 kHz heatsink

is not required. For high repetition rates the driver should be attached to the heatsink with thermal resistance of at least 0.4 °C/W for room temperature (25 °C) operation.

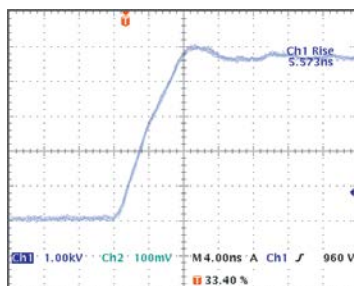
The driver should be mounted into dielectric box (not provided) providing electrical insulation. Low voltage power supply is required to internal triggering circuit, while tuning of HV power supply voltage.



DQ series Pockels cell driver



Oscillogram of DQ-100-4 driver operation



Fast edge of HV pulse in detail

Specifications

CATALOGUE NUMBER	DQ-100-4
Maximum high voltage (HV) pulse amplitude	4.0 kV
Polarity	Positive
HV pulse rise time	< 7 ns
HV pulse fall time	~2 µs ¹⁾
HV pulse duration	180 ns ¹⁾
Maximum HV pulse repetition rate	100 kHz
HV pulse jitter	< 0.5 ns
External triggering pulse duration requirement	100 – 1000 ns
External triggering pulse amplitude requirement	3 – 5 V (50 Ω)
External triggering pulse rise & fall time	< 10 ns
HV pulse delay	35 – 40 ns
External powering requirements:	
high voltage supply	0 – 4.0 kV, 9 mA max ²⁾
low voltage DC supply	9 – 24 V, 500 mA max ²⁾
Operating temperature	0 – 35 °C ³⁾
Size	104 × 52 × 25 mm

¹⁾ Typical value.

²⁾ Test conditions: PRR = 100 kHz, C = 6 pF, U = 4 kV.

³⁾ Heat sink temperature must not exceed 35 °C (95 °F) in all regimes of operation.

POCKELS CELLS DRIVER FOR Q-SWITCHING OF FLASHLAMP PUMPED LASERS – DQF

DQF drivers are designed for Q-switching of nanosecond lasers without use of phase retardation plate. High voltage is applied to Pockels cell in order to inhibit oscillation. Pockels cell is opened by negative polarity pulse allowing laser to radiate.

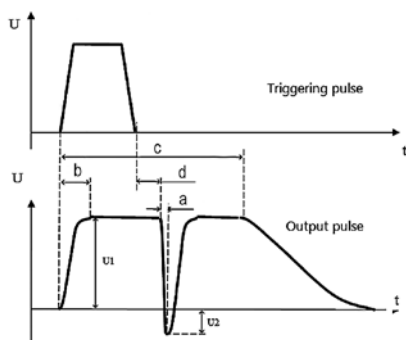
Driver DQF-0.1-8D is integrated with ± 4 kV HV power supply. High voltage can be controlled either by onboard trimmer potentiometer or by using CAN interface. Control by CAN requires USB-CAN converter for computer control that is sold separately.



DQF-0.2-5 Pockels cell driver



DQF-0.1-8 Pockels cell driver with integrated HV Power supply



Timing diagram of DQF driver

Specifications

CATALOGUE NUMBER	DQF-0.2-5D	DQF-0.1-8D
Maximum high voltage to cell (HV) pulse amplitude (U1 + U2)	5 kV	8 kV
U1 value	equal to HV powering voltage	
U2 value	equal to 0.25×U1	
HV pulse fall time (a)	< 15 ns	< 12 ns
HV pulse rise time, typical (b)	60 μs	120 μs
HV pulse duration, typical (c)	300 μs (1200 μs optionally)	650 μs
HV pulse repetition rate	≤ 250 Hz	≤ 100 Hz
HV pulse delay (d)	40 ns	25 ns
External triggering pulse duration	100 – 1200 μs	120 – 650 μs
External triggering pulse amplitude	3 – 5 V (50 Ω)	3.5 – 5 V (50 Ω)
External triggering pulse rise & fall time	< 20 ns	
Board dimensions ¹⁾	92 × 70 × 22 mm	92 × 70 × 27 mm
Mounting holes location for M3 studs	84 × 62 mm	
External powering requirements:		
DC supply	12 – 24 V, max 200 mA	12 V, max 15 mA
HV supply	4 kV, 1 mA	integrated in the driver

¹⁾ Keep safety distance at least 5 mm from any side of board or any component to surrounding conductive parts.

POCKELS CELL AND POCKELS CELL DRIVER SELECTION GUIDE

Suggested Configuration samples. Please contact our sales engineers for a complete solution tailored to your application.

For operation at 515 – 532 nm wavelength

Material	Max repetition rate, kHz	Ø CA, mm	Phase retardation	HV pulse duration	Pockels cell	Driver	HV Power supply
BBO	1000	2.5	$\lambda/4$	100 – 5000 ns	PCB3S	DP-1000-1.8-AI	PS-80-1.8 or HVS100-80-1.8
BBO	500	3.5			PCB4S	DP-500-2.6-AI	PS-120-2.6 or HVS100-120-2.6
DKDP	10	11		30 – 3000 ns	PC12SR or D-compact/12	DPB-10-4.2	PS-5-2.1
KTP / RTP	2000	5.5	$\lambda/2$	0 – 5000 ns	PCK6 / PCR6	2DP-2000-1.6-AI	HV-200-1.6 or HVS100-2x120-1.6
BBO	500	3.5	0 – $\lambda/2$	70 – 1000 ns	PCB4D	DP-FAM-500-2.5-AI	PS-120-2.6 or HVS100-120-2.6
DKDP	5	11	$\lambda/2$	30 – 3000 ns	PC12SR or D-compact/12	DPB-5-5.6	PS-5-2.8

For operation at 780 – 800 nm wavelength

Material	Max repetition rate, kHz	Ø CA, mm	Phase retardation	HV pulse duration	Pockels cell	Driver	HV Power supply
BBO	6000	2.5	$\lambda/4$	0 – 5000 ns	PCB3D/25	2DPB3-6000-1.3-AI	HV-400-1.5
BBO	1000	5.8		100 – 5000 ns	PCB6.3D	DPB1-1000-2.9-AI	PS2-60-1.6 or HVS100-2x60-1.6
DKDP	10	11		30 – 3000 ns	PC12SR or D-compact/12	DPB-10-4.2	PS-5-2.1
KTP / RTP	1000	5.5	$\lambda/2$	0 – 5000 ns	PCK6 / PCR6	2DP-1000-2.4-AI	HV-200-2.4
KTP / RTP	500	5.5	0 – $\lambda/2$	70 – 1000 ns	PCK6 / PCR6	DP-FAM-500-2.5-AI	PS-120-2.6 or HVS100-120-2.6
DKDP	3	11	$\lambda/2$	35 – 2000 ns	PC12SR or D-compact/12	DPB-3-8.6	PS-5-4.4

For operation at 1030 – 1064 nm wavelength

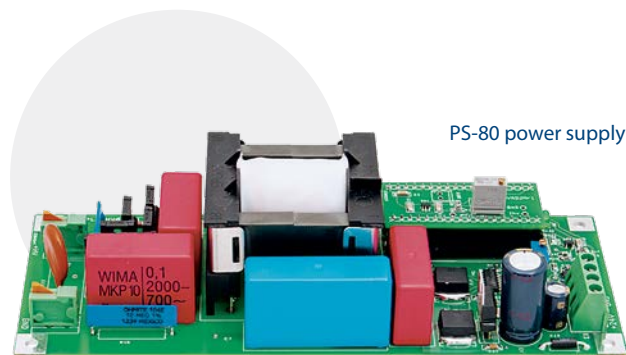
Material	Max repetition rate, kHz	Ø CA, mm	Phase retardation	HV pulse duration	Pockels cell	Driver	HV Power supply
KTP / RTP	4000	5.5	$\lambda/4$	0 – 5000 ns	PCK6 / PCR6	2DPB3-4000-1.7-AI	HV-400-2.0
BBO	600	3.5		15 – 400 ns	PCB4D	DP-SP-600-2.5-AI	PS-120-2.6 or HVS100-120-2.6
DKDP	5	11		30 – 3000 ns	PC12SR-1/1, D-compact/12	DPB-5-5.6	PS-5-2.8
KTP / RTP	1000	5.5	$\lambda/2$	100 – 5000 ns	PCK6 / PCR6	DPB1-1000-2.9-AI	PS2-60-1.4 or HVS100-2x60-1.4
BBO	300	3.5			PCB4D	DPB1-300-4.6-AI	PS2-60-2.6 or HVS100-2x60-2.6
DKDP	2.5	11		35 – 2000 ns	PC12SR-1/1, D-compact/12	DPB-2.5-9.8	PS-5-5.0

For operation at 1550 – 1560 nm wavelength

Material	Max repetition rate, kHz	Ø CA, mm	Phase retardation	HV pulse duration	Pockels cell	Driver	HV Power supply
BBO	1000	3.5	$\lambda/4$	100 – 5000 ns	PCB4D	DPB2-1000-3.8-AI	HV-2x200-2.0 or HVS100-4x60-2.0
KTP / RTP	500	5.5			PCK6 / PCR6	DP-500-2.6-AI	HVS100-120-2.6
BBO	250	3.5			PCB4D	DP-250-3.6-AI	HVS100-80-3.6
KTP / RTP	2500	3.5	$\lambda/2$	100 – 5000 ns	PCK4 / PCR4	DPB3-2500-3.1-AI	HV-2x200-2.0
BBO	500	3.5			PCB4D	DPB3-500-7.2-AI	HV-2x200-3.6
BBO	300	2.5			PCB3D/25	DPB1-300-4.6-AI	PS2-60-2.6 or HVS100-2x60-2.6

All combinations of Pockels cell, driver and HV power supply can be integrated into a single pulse-picking system UP2 or MP1.

HV Power Supplies



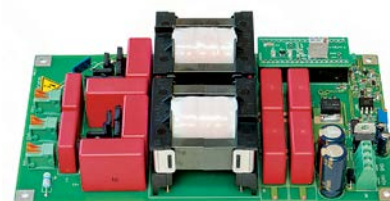
PS-80 power supply

OEM TYPE HIGH VOLTAGE POWER SUPPLY – PS

PS series Power supplies are designed for powering Pockels cell drivers with required power and voltage. Due to its performance and reliable design, PS is good choice for OEM customers. It features high stability low ripple output together with convenient voltage

control by internal trimmer or CAN computer interface.

Power supplies PS-120 and PS2-60 are equipped with overheat protection and LED indicator that stops operation and lights if ambient temperature exceeds 55 °C.



PS-120, PS2-60 power supply

Specifications

MODEL	PS-5	PS-40	PS-80	PS-120	PS2-60	PS-170	PS-2x85
Maximal high voltage output options ¹⁾	1.8 kV	1.3 kV	1.8 kV	1.8 kV	±1.4 kV	1.8 kV	±1.5 kV
	2.8 kV	1.8 kV	2.6 kV	2.6 kV	±2.0 kV	2.6 kV	±1.8 kV
	4.0 kV	2.5 kV	3.1 kV	3.1 kV	±2.6 kV	3.6 kV	
	4.4 kV	3.6 kV	3.6 kV	3.6 kV	±3.6 kV		
	5.0 kV	4.0 kV	4.0 kV				
Maximal output power at maximal output voltage ²⁾	5 W	40 W	80 W	120 W	2 × 60 W	170 W	2 × 85 W
Voltage control limits	U _{max} – 1 kV to U _{max} (internal trimmer); 40% U _{max} to U _{max} (CAN)					40% U _{max} to U _{max}	
Output voltage control options ³⁾	CAN interface ⁴⁾ , internal trimmer potentiometer						
External powering	24 V DC, <15 W	24 V DC, <50 W	24 V DC, <90 W	24 V DC, <150 W	24 V DC, <150 W	24 V DC, <200 W	
Dimensions (L × W × H)	135×70×30 mm	160×70×40 mm	175×70×45 mm	175×110×45 mm		152×80×58 mm	
Mounting holes Ø3.4 mm location	125×35 mm	150×60 mm	165×60 mm	165×100 mm		–	

¹⁾ Matching to Pockels cell driver voltage requirement is necessary by ordering.

²⁾ Maximal power is proportionally lower by tuning to lower HV output.

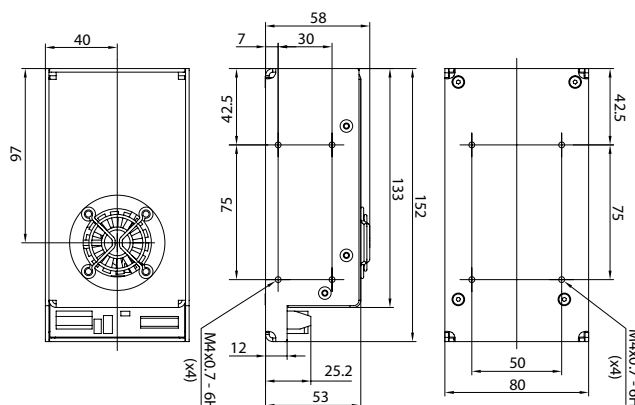
³⁾ Needs to be indicated by ordering.

⁴⁾ Requires USB-CAN converter for computer control that is sold separately. Voltage control limits from 40% U_{max} to U_{max} .

Output ripple is 0.5% typically at maximal power for all models of HV power supplies. External filter can be used to reduce that value if certain application requires smoother output. All Pockels cell drivers have integrated ripple filter and usually do not require additional one. Contact us for suggestions if your specific application needs lower ripple voltage.



PS-170, PS2-85 HV power supply



Outline drawing of PS-170, PS2-85 HV power supply

LABORATORY TYPE HIGH VOLTAGE POWER SUPPLY – HVS100

Laboratory type HVS100 series high voltage power supply is especially designed for powering of drivers of Pockels cells. However, it can be used as general purpose high voltage power supply for other electronic devices and different applications in the laboratory. HVS100 features two voltage output channels – adjustable high voltage output channel and 24 V DC output channel.

Required high voltage value can be set and adjusted in the limits from 40 % of maximal specified voltage to maximal specified voltage (40 % U_{max} to U_{max}).

HVS100 has 2.4 inch OLED display for high voltage control and current consumption monitoring at the output channel.



Front panel of HVS100 power supply



Rear panel of HVS100 power supply

Specifications

CATALOGUE NUMBER	HVS100-2x60	HVS100-120	HVS100-5	HVS100-40	HVS100-80	HVS100-150
Maximal high voltage output options	± 1.4 kV ± 2.5 kV	1.8 kV 2.6 kV 3.1 kV 3.6 kV	1.8 kV 2.8 kV 4.0 kV 4.4 kV 5.0 kV	1.3 kV 1.8 kV 2.5 kV 3.6 kV 4.0 kV	1.8 kV 2.6 kV 3.1 kV 3.6 kV 4.0 kV	1.8 kV 2.6 kV 3.1 kV 3.6 kV 4.0 kV
HVS100 Maximal output power at maximal output voltage	2x60 W	120 W	5 W	40 W	80 W	150 W
Voltage control limits	40 % U_{max} to U_{max}					
Remaining power at the output of 24 V DC for external needs	55 W	55 W	190 W	150 W	100 W	Not available
Mains voltage / DC supply	90 to 264 V AC, 47 – 63 Hz					24 V DC
Dimensions (W x L x H)	230 x 245 x 53.5 mm					
Weight	2.5 kg					

Output ripple is 0.5% typically at maximal power for all models of HV power supplies.

Maximal power is proportionally lower by tuning to lower HV output.

HIGH VOLTAGE POWER SUPPLY – HV

Features

- Up to 400 W and 4 kV at the output
- Single polarity HV and bipolar HV-2x versions
- Computer control through CAN and RS232
- 48 V DC powering
- Auxiliary 24 V DC output for Pockels cell drivers

OEM type HV series power supply modules are designed to be used with high power and high repetition rate Pockels cell drivers that require >120 W power from HV source. To extend the versatility of possible applications we offer both single (positive) polarity and bipolar HV series power supplies.

HV power supplies can also be used as universal HV power supplies for different applications where up to 200 – 400 W high voltage source is required. HV series module provides maximal power (200 W or 400 W) at the indicated maximal rated voltage only.

Therefore, the required rated voltage should be noted when ordering (possible options are listed in the specifications table).

The input of HV series power supply is 48 VDC. 24 VDC auxiliary output is a convenient feature to use the module as a single power source (high plus low voltage) with one of EKSMA Optics Pockels cell drivers. The output voltage can be tuned from zero to maximal value using an internal trimmer potentiometer, CAN or RS232 interfaces. Analog control (0 – 10 V) is possible under request.



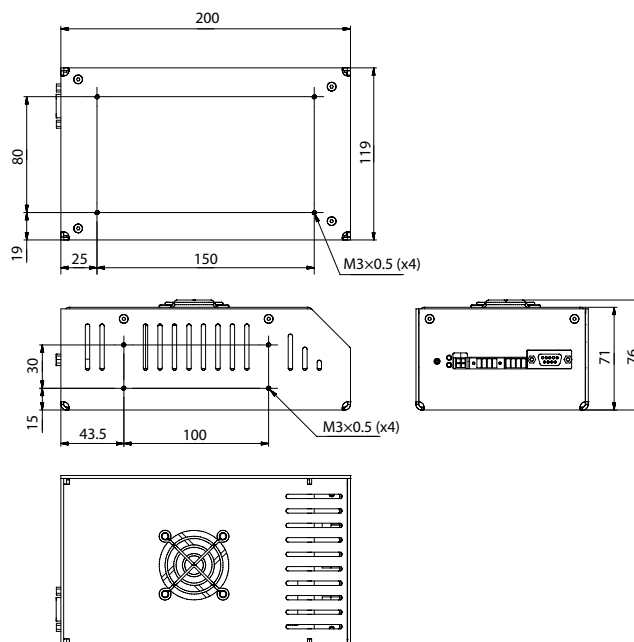
Front and rear view of HV power supply module

Specifications

MODEL	HV-200	HV-400	HV-2x200
Maximal HV options	1.8 kV 2.6 kV 3.6 kV 4.0 kV ^{1) 2)}		± 1.5 kV ± 2.0 kV ± 2.6 kV ± 3.6 kV
Maximal output power	200 W ¹⁾	400 W ²⁾	2 × 200 W
Voltage control range	0 – U _{max}		
Auxiliary output	24 VDC, 1.2 A		
Controls	CAN, RS232, internal trimmer potentiometer		
Powering requirement	48 V, 4.5 A	48 V, 9 A	
Dimensions	200 × 118 × 75 mm		

¹⁾ Maximal output power of 4 kV HV-200 version is limited to 180 W.

²⁾ Maximal output power of 4 kV HV-400 version is limited to 360 W.



Outline drawing of HV power supply module.

Q-Switching Kits

KD*P POCKELS CELL Q-SWITCHING KIT – QKD

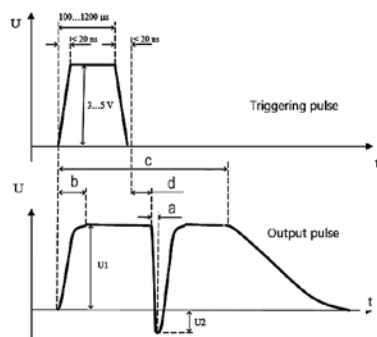
Features

- Pulse repetition rate up to 200 Hz
- Q-switching without retardation plate

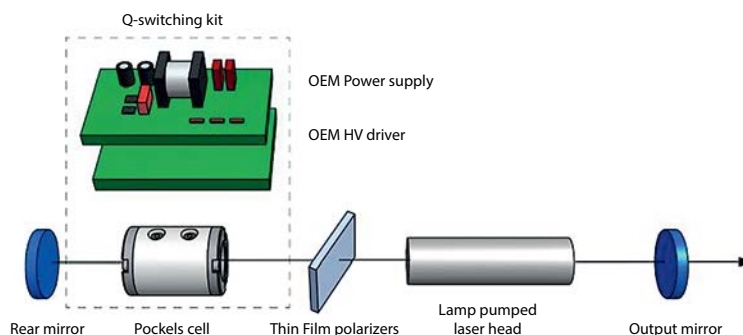
OEM QKD series Pockels cell kits are designed to be used with lamp pumped nanosecond lasers. High voltage is applied to DKDP (KD*P) Pockels cell through DQF Pockels cell driver in order to inhibit oscillation. Pockels cell is opened by negative polarity pulse allowing laser to radiate.

DKDP Pockels cells Q-switching kit includes:

- Low repetition rate Pockels cell driver (see page 18)
- High voltage power supply for Pockels cell driver (see page 20)
- KD*P Pockels cell (see page 5)



Timing diagram of DQF Pockels cell driver



Typical Q-switching with DKDP Pockels cell in $\lambda/4$ scheme

ORDERING INFORMATION

MODEL	QKD-01	QKD-02	QKD-03
Wavelength	1064 nm		
Operation	quarter wave ($\lambda/4$)		
Repetition rate	up to 200 Hz		
Clear aperture	4.5 × 4.5 mm	Ø 8 mm	Ø 11 mm

BBO POCKELS CELL Q-SWITCHING KIT – QKB

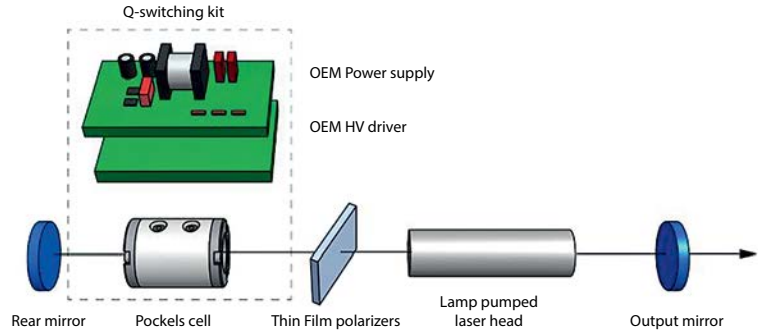
Features

- Pulse repetition rate up to 100 kHz
- Up to 10 kHz no external cooling is required
- Fast HV rise time <7 ns

OEM QKB series Pockels cell kit is designed for Q-switching of high repetition rate nanosecond lasers and mode locked lasers.

BBO Pockels cells Q-switching kit includes:

- High repetition rate Pockels cell driver (see page 17)
- High voltage power supply for Pockels cell driver (see page 20)
- BBO Pockels cell (see page 6)



Typical Q-switching with BBO Pockels cell in $\lambda/4$ scheme

Ordering information

MODEL	QKB-01	QKB-02
Wavelength	1064 nm	
Operation	quarter wave ($\lambda/4$)	
Repetition rate	up to 100 kHz	
Clear aperture	Ø 2.5 mm	Ø 3.5 mm

Ultrafast Pulse Picking Systems

Digital synchronization and delay pulse generator pMaster 4.2



DIGITAL SYNCHRONIZATION AND DELAY PULSE GENERATOR – pMaster 4.2

Features

- Synchronization with pulsed lasers emitting laser pulses at up to 100 MHz repetition rate
- Control of ultrafast pulse picking units operating at up to 2 MHz repetition rate
- Single shot, burst or normal operation modes
- 4 output channels for full control of Pockels cells drivers with 100 ps resolution
- Touch screen for setting operation parameters and monitoring of HV current
- Communication via USB port
- Integrated over-temperature protection
- Protection installed in order to prevent damage if control cables are connected incorrectly
- Possibility to use asynchronous gate input signal

pMaster 4.2 is a timing generator with four output channels used for the full control of operation of high voltage Pockels cells drivers which are built-in in UP2 or MP1 pulse

picking units. pMaster 4.2 also has built-in high voltage power supplies for Pockels cells drivers powering.

Specifications of pMaster 4.2 timing generator

MODEL		pMaster 4.2
Control modes		Internal pulse generator, External trigger, External RF source
Internal Pulse generator	Operation modes	Single shot, burst, normal
	Delay range	1.1 nanoseconds to 140 milliseconds
	Resolution	100 ps
	Accuracy	$25 \text{ ps} + 0.000001 \times \text{delay}$
	Time base	100 MHz, 0.2 ppm
	RMS jitter	< 100 ps
	Channel to channel jitter	< 30 ps
External synchronization	Synchronization source	External trigger, SYNC IN input
	Rate	1 Hz to 20 MHz
	Min pulse width	10 ns
	Threshold	1.3 V
	Input level	LVTTTL, tolerates 5 V
	Impedance	0.2 mA pulldown
	Slope	rising
External RF source, CLK IN input	Rate	10 MHz to 100 MHz
	Min pulse width	300 ps
	Input level	0.5 V to 3.3 V
	Impedance	50 Ω
Outputs	Output level	4.5 V
	Output impedance	50 Ω
Communication, powering and physical specifications	Communication	USB
	Power	230 V AC 50 Hz or 110 V AC 60 Hz
	Dimensions	482 × 387 × 88 mm

Ordering information

Digital synchronization and delay pulse generator pMaster 4.2 should be matched with pulse picker MP1 or UP2. Please contact our sales engineers for a complete solution tailored to your application.

PULSE PICKER – MP1

Features

- Pulse picking rate up to 600 kHz
- Fast Amplitude Modulation version available

MP1 pulse picker consists of built-in fast driver and a Pockels cell. This unit is able to select pulses at up to 600 kHz rate. MP1 is operated by pMaster 4.2 generator which provides sync pulses for driver control and has built-in HV power supply. MP1 can be synchronized with a laser generating pulse train with max 60 MHz repetition rate for single pulse picking task when it is in setup with pMaster 4.2 generator.

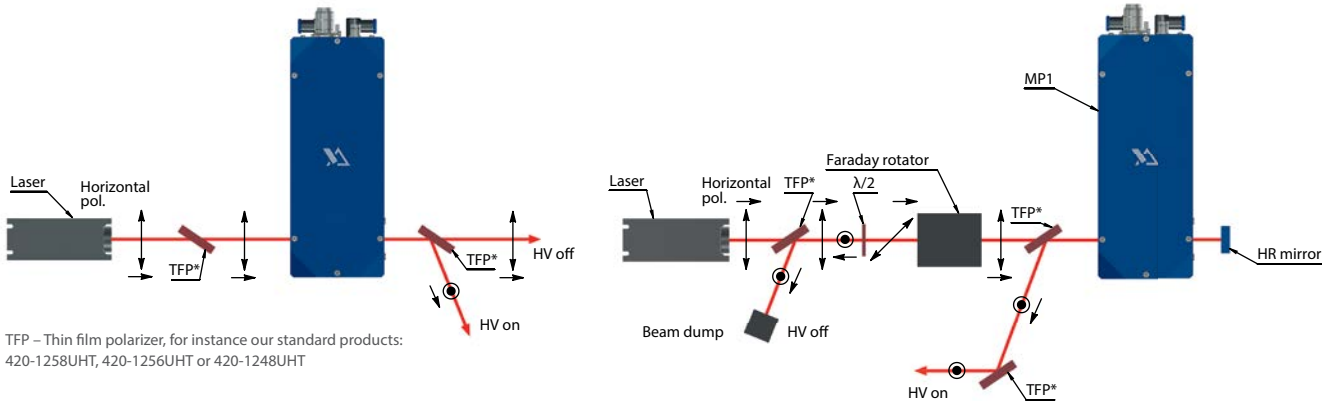


Specifications of MP1 pulse picker units

PULSE PICKER	MP1-DKDP-11	MP1-BBO-5.8	MP1-BBO-3.5	MP1-FAM-KTP-5.5
Built-in-driver, max operating rate	up to 5 kHz	up to 250 kHz	up to 600 kHz	up to 500 kHz
Max laser repetition rate for single pulse picking	40 MHz	60 MHz		10 MHz
HV power supply	provided in pMaster 4.2			
Operation	quarter-wave, $\lambda/4$			0 to $\lambda/2$
HV pulse duration	30 – 3000 ns	15 – 1250 ns	15 – 400 ns	70 – 1000 ns
HV pulse rise time, typical	< 9 ns	< 8 ns	< 7 ns	< 26 ns
HV pulse fall time, typical	< 9 ns	< 8 ns	< 7 ns	< 13 ns
Pockels cell contrast ratio, VCR	1 : 500			
Pockels cell transmission	> 97 % at 1064 nm	> 98 % at 1064 nm		
Clear aperture	Ø11 mm	Ø5.8 mm	Ø3.5 mm	Ø5.5 mm
Cooling	conductive	water		
Dimensions (L × W × H)	230 × 90 × 69 mm			

MP1 can be set for operation at standard laser wavelengths (1064 nm, 1030 nm, 800 nm) or at any specific laser wavelength in the range from 500 to 2000 nm.

Suggested operation schemes



Single pass (half-wave) operation scheme

Double pass (quarter-wave) operation scheme

Suggested configurations

CODE	DESCRIPTION
MP1-DKDP-11 + pMaster 4.2	Ultrafast pulse picker for up to 5 kHz operating rate, DKDP clear aperture Ø11 mm, $\lambda/4$ operation at 1064 nm. Pulse synchronization and delay generator, 4 output channels for trigger pulses with built-in High Voltage supply
MP1-BBO-5.8 + pMaster 4.2	Ultrafast pulse picker for up to 250 kHz operation, BBO clear aperture Ø5.8 mm, $\lambda/4$ operation at 1064 nm. Pulse synchronization and delay generator, 4 output channels for trigger pulses with built-in High Voltage supply
MP1-BBO-3.5 + pMaster 4.2	Ultrafast pulse picker for up to 600 kHz operation, BBO clear aperture Ø3.5 mm, $\lambda/4$ operation at 1064 nm. Pulse synchronization and delay generator, 4 output channels for trigger pulses with built-in High Voltage supply

ULTRAFAST PULSE PICKER – UP2

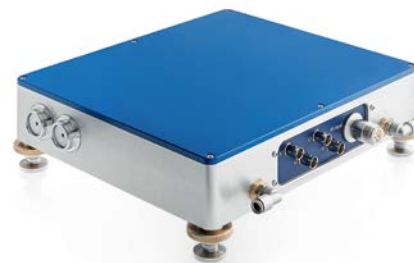
Features

- Pulse picking rate up to 2 MHz

UP2 pulse picker consists of built-in drivers, Pockels cell, high contrast ratio polarizers, beam dump and other optical components necessary for pulse picking application. The UP2 pulse picker in setup with pMaster 4.2

generator is able to select pulses at up to 2 MHz rate from max 100 MHz repetition rate pulse train. UP2 comes with BBO or KTP Pockels cell which are set for quarter wave or half wave voltage operation depending on the laser wavelength and required minimal clear aperture of the Pockels cell.

KTP Pockels cell's usage is limited by the average power of the laser beam – up to 2 W and contrast ratio is typically >1:500. While BBO Pockels cells operate at much higher power levels and feature higher contrast ratio – typically >1:1000.

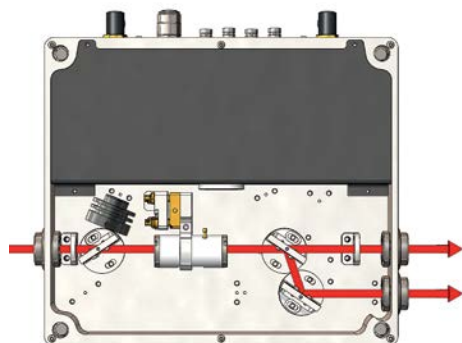


Specifications of UP2 pulse picker units

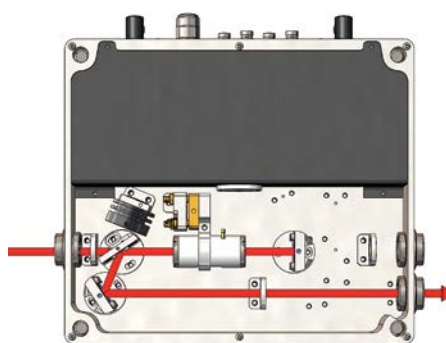
PULSE PICKER	UP2-BBO-3.5	UP2-BBO-2.5	UP2-KTP-5.5	UP2-KTP-3.5
Built-in-driver, max operating rate	up to 1 MHz	up to 2 MHz	up to 1 MHz	up to 2 MHz
Max laser repetition rate for single pulse picking	100 MHz			
HV power supply	provided in pMaster 4.2			
Operation	quarter-wave, $\lambda/4$		half-wave, $\lambda/2$	
HV pulse duration	0 – 5000 ns			
HV pulse rise time, typical	< 7 ns			
HV pulse fall time, typical	< 7 ns			
Pockels cell contrast ratio, VCR	1 : 500			
Pockels cell transmission	> 98 % at 1064 nm		> 98 % at 800 nm	> 98 % at 1064 nm
Clear aperture	Ø3.5 mm	Ø2.5 mm	Ø5.5 mm	Ø3.5 mm
Cooling	water			
Dimensions (L × W × H)	240 × 275 × 59 mm			

UP2 can be set for operation at standard laser wavelengths (1064 nm, 1030 nm, 800 nm) or at any specific laser wavelength in the range from 500 to 2000 nm.

Suggested operation schemes



Single pass (half-wave) operation scheme



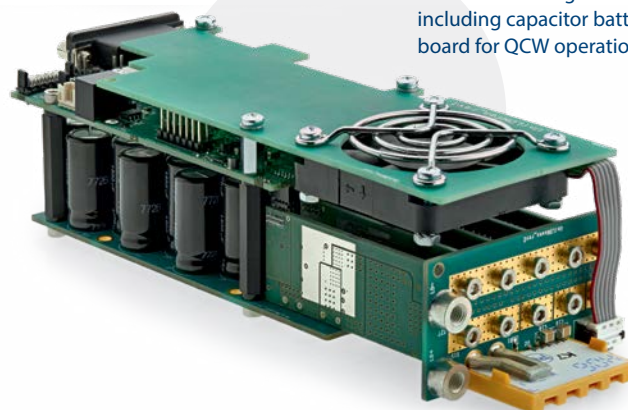
Double pass (quarter-wave) operation scheme

Note. Additional components – Faraday rotator, $\lambda/2$ waveplate and polarizer are required for safe operation of the laser when pulse picker is used in double pass configuration. See suggested scheme at page 26 .

Suggested configurations

CODE	DESCRIPTION
UP2-BBO-3.5 + pMaster 4.2	Ultrafast pulse picker for up to 1 MHz operation, BBO clear aperture Ø3.5 mm, $\lambda/4$ operation at 1064 nm. Pulse synchronization and delay generator, 4 output channels for trigger pulses with built-in High Voltage supply
UP2-BBO-2.5 + pMaster 4.2	Ultrafast pulse picker for up to 2 MHz operation, BBO clear aperture Ø2.5 mm, $\lambda/4$ operation at 1064 nm. Pulse synchronization and delay generator, 4 output channels for trigger pulses with built-in High Voltage supply
UP2-KTP-5.5 + pMaster 4.2	Ultrafast pulse picker for up to 1 MHz operation, KTP clear aperture Ø5.5 mm, $\lambda/2$ operation at 800 nm. Pulse synchronization and delay generator, 4 output channels for trigger pulses with built-in High Voltage supply
UP2-KTP-3.5 + pMaster 4.2	Ultrafast pulse picker for up to 2 MHz operation, KTP clear aperture Ø3.5 mm, $\lambda/2$ operation at 1064 nm. Pulse synchronization and delay generator, 4 output channels for trigger pulses with built-in High Voltage supply

Laser Diode Drivers



Forced air cooling driver version including capacitor battery board for QCW operation

UNIVERSAL LASER DIODE DRIVER – uniLDD

Features

- Latest DSP based control technology
- Designed for high power applications
- Max 100A & 27V in CW mode
- Max 360A & 80V in QCW mode
- Low current ripple
- Low current drift
- High precision and stability
- Optional integrated TEC controller
- Analog and digital control interfaces

uniLDD is a DC input power converter designed to supply CW up to 100 A or pulsed (QCW) up to 360 A current for the single emitter, bar, stacked laser diode or high power VCSEL in constant current mode. Using different software versions and minor hardware modifications, the uniLDD driver is adapted for different types of laser diodes and modes of operation.

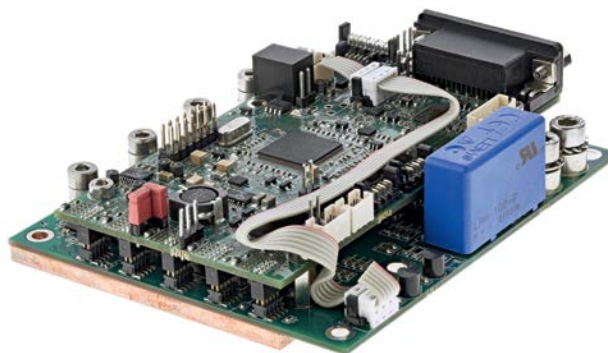
The driver is based on DSP technology. At the factory done frequency response analysis based on customer's requirements allows achieving stable operation with any load and connection cables combination in both CW and QCW operation modes. Besides, this lets to shorten rise time in QCW mode if necessary. To fulfill all those features and deliver the driver with the best performance, we ask to fill in the questionnaire.

High-efficiency PWM-based converter with up to 4-phases output provides around 90% efficiency and gives very smooth, low noise and high precision output to the

laser diode. Below the given charts are the performance results on the test bench. The uniLDD driver is most effective if used for diode currents above 10 A. Depending on the configuration, uniLDD driver control is done by analog, CAN and RS232 interfaces.

Optionally, uniLDD allows bidirectional control (active heating and cooling) of one or two TEC's with the same driver providing current up to 25 A and voltage up to 28 V.

The driver can be delivered in two possible design shapes. The first one is an internal fan-cooled set of screwed together set of boards. This is a general, most flexible design allowing easy customization and implementing most of the possible features. The second one, the conductive cooling driver is specifically adapted for CW operation and lets to save design space. No fan is required. Cooling is done by attaching the board to a massive enough heatsink or cold plate.



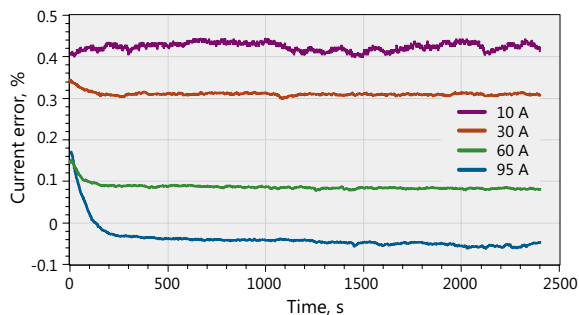
Conductive cooling driver version for CW operation

General specifications

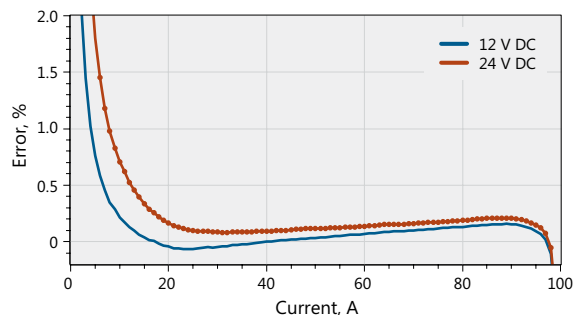
PARAMETER	VALUE	NOTES
INPUT		
Voltage, power stage	12 ... 90 V DC	
Voltage, control stage	12 ... 30 V DC	
OUTPUT, CW mode		
Diode compliance voltage	1 ... 27 V	Up to 95% of power stage supply voltage
Max current	50 – 100 A	See SUGGESTED CONFIGURATION for max current values
Current ripple	0.1 % pk-pk	DC ... 100 kHz bandwidth, in $\times 0.5 \dots \times 1$ of max current range
Current drift	< 0.2 %	Cold start, 8 h period, after 5 min warm up
Bandwidth of I_{programm} control input frequency	> 10 kHz	At minimal connection cable inductance
OUTPUT, QCW (Pulse mode)		
Diode compliance voltage	1 ... 80 V	
Max pulse current	160 – 360 A	See SUGGESTED CONFIGURATION for max current values
Current pulse raise	> 5 μs	At minimal connection cable inductance and sufficient power stage voltage
Max RMS current	80 A	80 A for diode compliance voltage > 28 V
Current pulse amplitude stability	0.1% pk-pk	In $\times 0.5 \dots \times 1$ of max current range
Current drift	< 0.2 %	Cold start, 8 h period, after 5 min warm up
ENVIRONMENT		
Operating temperature	0 to 40 °C	De-rate current at higher temperature
Cooling	Forced air, installed or external shared fan	Inquire for conduction cooled version
PROTECTIONS		
Current transient protection and shut-down		
Open circuit shut-down		
Power voltage brownout shut-down		
Over temperature shut-down		
Interlock shut-down		
AUXILIARY OUTPUTS		
+5 V @ 200 mA		
+15 V @ 100 mA		
-15 V @ 100 mA		
CONFIGURATIONS		
Operation mode	CW, QCW (pulse)	
Max current, CW mode	50 A, 80 A, 100 A	
Max current, pulse mode	160 A, 360 A	$I_{\text{RMS}} \leq 100 \text{ A}$, duty factor $\leq 20 \%$
Max power stage voltage	28 V (CW, QCW) and 90 V (QCW)	
TEC CONTROL (if equipped)		
Quantity of outputs to control	0, 1 or 2	
Maximal output current to TEC	25 A	
Maximal output voltage to TEC	28 V	
PHYSICAL CHARACTERISTICS		
Assembly size (L×W×H)	190 × 68 × 55 mm	15 mm fan included
Conductive cooled assembly size (L×W×H)	117 × 90 × 27 mm	
Connectors	Analog control – DSUB-15	
	Digital control – Molex Picoflex	6 pin and 10 pin connectors
	DC power input – Multiple	
DIGITAL CONTROL INTERFACE		
CAN bus	Proprietary EKSMA Optics protocol	Protocol description, control application, libraries and programming samples are provided on request
	"CAN Open" stack	may be added on request
RS232 port	ASCII text command protocol	
	Proprietary EKSMA Optics CAN messages tunnel over RS232 protocol	Control application, libraries and programming samples are provided

Notes:

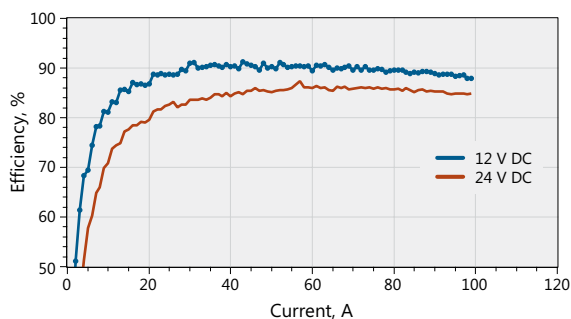
- Max current is transient protection upper setting. Laser diode EOL nominal current should be 95% or less of this value.
- Parallel connection of several drivers can be used above 100 A in CW and 400 A in QCW.
- Specifications are subject to change without prior notice. Not all combinations of parameters are possible at the same time. See configuration samples for suggested configurations or send a request with your requirements.



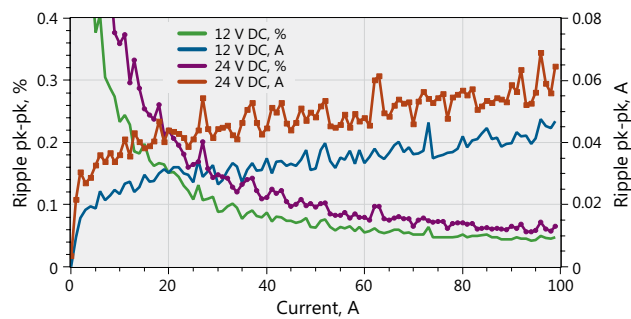
uniLDD current drift.
From cold start for different currents



uniLDD current error.
12 V and 24 V DC power, 2 V junction + 10 MΩ series R load



uniLDD efficiency.
12 V and 24 V DC power, 2 V junction + 10 MΩ series R load



uniLDD ripple current.
12 V and 24 V DC power, 2 V junction + 10 MΩ series R load

Analog interface pinout, 15-pin D-sub, female

PIN	SIGNAL NAME	DIRECTION	VOLTAGE LEVEL	DESCRIPTION
1	Enable	Input	TTL, LVTTTL	The enable function pulls the RTO signal high
2	Ready to Operate (RTO)	Input/Output through 330 Ω resistor	> 2.4 V driver output is active, < 0.5 V output is clamped	RTO is tied to "High" by the driver when "Enable" input is High. Alarms clamp RTO low and disable driver output. External device may clamp RTO to GND and disable driver output. RTO allows to join fault circuits of several drivers connected in parallel
3	Interlock	Input	10 kΩ pull up to 3.3 V, LOW ≤ 0.4 V	The Interlock function can be connected to external safety or machine protection switches such as door or temperature switches. Open = OFF Connect to GND = RUN
4	GND			
5	V _{out} monitor	Output	V _{out} , driver output voltage	The output voltage monitor. V _{out} = Diode compliance voltage + voltage drop on connection wires
6	I _{out} monitor	Output	0 – 12 V * = 0 – I _{out} max	The output current monitor
7	I _{program}	Input	0 – 9 V * = 0 – I _{out} max	Output current setting or modulating by applying a voltage, CW and Pulse mode
8	Pulse control	Input	TTL, LVTTTL positive pulse	Trigger input for pulse mode. Pulse rise will trigger current pulse of preset width
9	GND			
15	GND			
10, 11	+5V	Output	+5V	Auxiliary, 200 mA
12	-15V	Output	-15V	Auxiliary, 100 mA
13, 14	+15V	Output	+15V	Auxiliary, 200 mA

* Subject to change.

Samples of suggested uniLDD driver configurations

CW mode preconfigured drivers

ORDER CODE	NO OF TEC CHANNELS	DIODE COMPLIANCE VOLTAGE UP TO	OUTPUT CURRENT UP TO	POWER SUPPLY VOLTAGE
uniLDD-CW-30-50	n/a	27 V	50 A	≤ 29 V DC *
uniLDD-CW-30-80	n/a	27 V	80 A	
uniLDD-CW-30-100	n/a	26 V	100 A	
uniLDD-CW-TEC-30-50	1	27 V	50 A	

* Power stage supply voltage need to be at least 2V above diode compliance voltage

CW mode conductive cooling preconfigured drivers

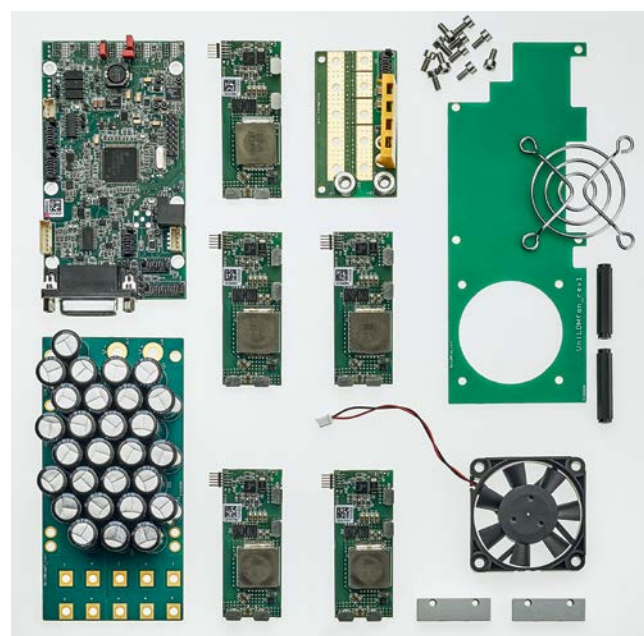
ORDER CODE	NO OF TEC CHANNELS	DIODE COMPLIANCE VOLTAGE UP TO	OUTPUT CURRENT UP TO	POWER SUPPLY VOLTAGE
uniLDD-C-CW-30-50	n/a	27 V	50 A	≤ 29 V DC *
uniLDD-C-CW-30-80	n/a	27 V	80 A	

* Power stage supply voltage need to be at least 2V above diode compliance voltage

QCW mode preconfigured drivers

ORDER CODE	NO OF TEC CHANNELS	DIODE COMPLIANCE VOLTAGE UP TO	OUTPUT CURRENT UP TO	POWER SUPPLY VOLTAGE	REPETITION RATE	PULSE DURATION	RISE TIME
uniLDD-QCW-30-120	n/a	6 V	120 A	24 V	2000 Hz	300 μs	30 μs
uniLDD-QCW-30-100	n/a	22 V	100 A	28 V	10 Hz	450 ms	1 ms
uniLDD-QCW-100-360	n/a	70 V	360 A	90 V	20Hz	500 μs	50 μs
uniLDD-QCW-2TEC-30-220	2	5 V	220 A	12 V	100 Hz	300 μs	30 μs
uniLDD-QCW-1TEC-100-150	1	70 V	150 A	90 V	20 Hz	250 μs	40 μs

Above tables are just for illustration of versatility of uniLDD driver. Drivers are ready to be preconfigured at the factory for specific requirements.



Modular design. Required features and specifications are achieved by combining different boards to one module

Ordering information

Please send filled in Questionnaire for Quotation with every inquiry. The Questionnaire for Quotation can be downloaded from our website Brochures section of UniLDD laser diode drivers.

Timing Generators



Laboratory type timing generator TG10



OEM version of TG10 timing generator SY4000-OEM

TIMING GENERATOR FOR APPLICATIONS WITH LASERS AND LASER COMPONENTS – TG10

Features

- Ultra-stable internal clock 0.2 ppm
- Precise delay control in range 2 ns to 150 ms
- 25 ps timing resolution
- Hi-accuracy synchronization to the external pulse train
- DAC output
- Frequency divider for photodetectors
- Measurement of:
 - Optical clock frequency
 - Triggering frequency
 - Delay

Applications

- Passive or active mode locked, Q-switched lasers, pulsed or QCW
- Data acquisition system triggering
- General purpose pulse generator
- Precise system clock source
- Laser pulse train converting to the clean clock source
- All functions listed above simultaneously at once!

The TG10 is a timing generator dedicated to the synchronization of laser systems and laser components: Pockels cell drivers, acousto-optical modulator drivers, laser diode and flash lamp drivers, detectors, data acquisition systems, laser pulse pickers, etc. The TG10 is designed to create up to 8 delayed output sequences precisely synchronized to the internal or external clock. A photodetector or electrical signal can be used as the input source to be synchronized with.

The timing generator can be used as a standalone unit with a touch screen interface (TG10) or installed as an optional add-on PCB board (SY4000-OEM). The TG10 device has an LCD touch screen for the manual control and a tunable knob for the adjustment of selected values set on the touch screen. Instructions of required actions are always displayed at the bottom of the screen. Besides, the timing generator has a digital control interface via CAN bus. Communication protocol with description for CAN is provided on request. CAN to USB converter is also available from EKSMA Optics.

Key features of the TG10

The key features of the TG10 module in addition to standard pulse generator features:

- Ability to lock to an external clock source, usually photo-diode pulse train. The triggering system is locked to the laser oscillator then, and trigger time is always in phase with the optical pulse.
- Instant switch between two configurations in delay blocks. Burst counter, gate input, frequency divider, or software commands may serve as the configuration switching signal sources. Configuration switch is used to control optical pulse pickers (EOM or AOM) in a highly flexible manner.

- Low jitter sync pulse output is used for high-speed acquisition systems like streak camera triggering. The typical jitter is 3...5 ps to the optical pulse.
- Control connector. The software-controllable multiplexer may divert any of the output signals to this connector to sniff what is on other connectors without disturbing them.
- Clock output: 1:1, 1:2 frequency.
- Up to 4 pulse outputs can be combined to single signals by OR, AND, NOT logical operations.
- DAC output, controlling, e.g. AOM pass through.

Input and output channels

CHANNEL	DESCRIPTION
OUTx	five digital general-purpose output channels (4.5 V @ 50 Ω)
AN OUT	analog output with 12-bit resolution (1 V @ 50 Ω)
COM TRIG	common trigger output. Configurable source (2.5 V @ 50 Ω)
PRE TRIG	precise trigger output channel. Configurable source (>1.5 V @ 50 Ω)
GATE IN	configuration switch and burst control input. (LVTTTL, tolerates 5 V. 0.2 mA pull-down)
SYNC IN	trigger input for DC to 20 MHz frequencies. (LVTTTL, tolerates 5 V. 0.2 mA pull-down)
CLK IN	clock input for 10 MHz to 100 MHz frequencies. (0.5 V to 3.3 V @ 50 Ω pk-pk, sine or pulses)

General specifications

PARAMETER	SPECIFICATION
TIME BASE	
Internal source	100 MHz 0.2 ppm TCXO
External source, Optical clock	20...100 MHz
INTERNAL RATE GENERATOR	
Sources	100 MHz clock, Optical clock, SYNC IN, Software command
Rate (T0 period)	50 ns...100 s (0.01 Hz to 20 MHz)
Resolution	10 ns or 1 Optical period or 1 SYNC IN period
RMS jitter	< 100 ps
EXTERNAL TRIGGER, SYNC IN INPUT	
System modes	Direct SYNC IN, SYNC IN re-clocked to Optical clock
Rate	DC to 20 MHz
Threshold	1.3 V
Input range	0...5 V
Trigger slope	rising edge
RMS jitter, Direct SYNC IN	< 120 ps
RMS jitter, SYNC IN re-clocked	< 5 ns
Insertion delay	< 80 ns
DELAY GENERATORS	
Channels, total	8
High res channels	5
High res channels, resolution	25 ps
Low res channels	3
Low res channels, resolution	< 10 ns
Delay	0 ... 150 ms
Pulse width	2 ns ... 150 ms
Accuracy, High res channel	2.5 ns + 0.000001 setpoint
Accuracy, Low res channel	≤ 10 ns + 0.000001 setpoint
Time base, Internal clock	100 MHz, 0.2 PPM TCXO
RMS jitter, channel to channel	< 30 ps TTL output, < 4 ps PRET output, < 20 ps LVDS outputs
CONFIGURATION SWITCH	
System modes	Single shot, burst, continuous, frequency divider, GATE IN, inverted GATE IN
Burst counter	1 ... 65535
Frequency divider	1 ... 32767
OUTPUTS, TTL/COMS	
Voltage @50 Ω load	2.5 V or 4.5 V
Voltage @1 MΩ load	5 V or 9 V
Voltage selection 5V/9V	internal jumper
Impedance	50 Ω
Rise time	1.5 ns typ
OUTPUT, PRET	
Pulse amplitude @50 Ω load	> 1 V
Impedance	50 Ω
Rise time	200 ps typ
OUTPUT, DIFFERENTIAL	
Type	LVPECL
OUTPUT, ANALOG	
DAC resolution	12 bit
Max amplitude @50 Ω	1 V
POWER	
Voltage	12 V ± 10%
Power	15 W max

Crystal Ovens

Many of widely used nonlinear crystals are susceptible to ambient humidity, for example KD*P, BBO, LBO. Protective coatings applied to the surface can reduce degradation to some extent only. To improve the protection of surfaces of the crystals from the degradation it is desirable to keep the crystals at higher than ambient temperature, which helps avoid condensation on the crystal surfaces.

In addition, if the crystal is used for harmonics generation, the phase-matching angle depends on crystal temperature. For example, the output power of second harmonics generator based on KD*P crystal can decrease by 50 % if the crystal temperature changes just by one degree, hence for good laser stability precise crystal temperature stabilization is necessary.

TEMPERATURE CONTROLLER TC2 WITH OVEN CO1 – TC2 / CO1

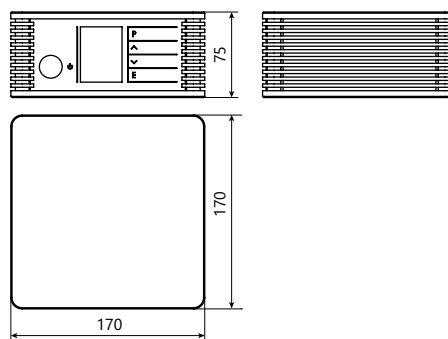
TC2 and CO1 is high temperature set (up to 200 °C) consisting of thermocontroller TC2 and crystal oven CO1. TC2 has two independent outputs and can control two CO1-30 ovens simultaneously. Controller is equipped by LAN and USB computer control interfaces.

The nonlinear crystal is mounted into adapter before insertion into oven CO1. Such design facilitates handling and replacement of the crystal. The nonlinear crystal can be sealed with fused silica windows in order to provide extra protection. The standard adapters are 30 and 50 mm length with apertures of 3×3, 4×4, 5×5, 6×6 mm and up to 12×12 mm size. Oven is delivered with one, customer's specific size of adapter. Adapters for different sizes can be ordered separately.

Specifications

MODEL	TC2 + CO1-30	TC2 + CO1-50
Quantity of ovens possible to connect to one controller TC2	2	
Temperature tuning range	RT – 200 °C	
Maximum crystals dimensions	12×12×30 mm	12×12×50 mm
Sealing (optional)	FS windows (operation wavelength must be specified before ordering)	
Temperature tuning step	0.05 °C	
Accuracy	± 0.5 °C	
Long-term stability	± 0.05 °C	
Control interfaces	LAN, USB	
Mains	90–264 V, 47–66 Hz	
Power consumption	< 50 W	
Dimensions, Dia×D	Ø52×52 mm	Ø52×72 mm

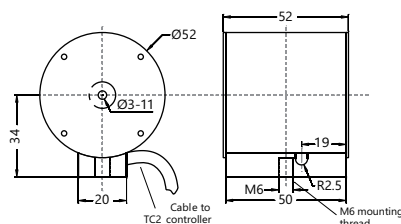
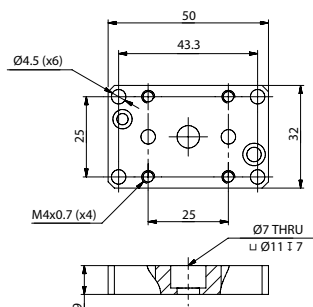
Specifications are subject to changes without advance notice.



Temperature controller TC2 outline drawing

Related products

Adapter MS-4 for CO1 mounting on tilt stage



Crystal oven CO1-30 outline drawing

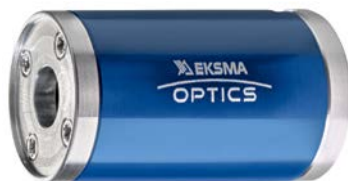
COMPACT OVEN FOR NONLINEAR CRYSTALS – Heatpoint

Heatpoint is a compact round oven designed for heating and thermo-stabilization of humidity sensitive nonlinear crystals. Temperature of the oven can be adjusted in 25 – 70 °C range using a small thermocontroller attached on a wire. Heatpoint ovens exhibit precise long-term stability and are ideal for keeping nonlinear crystals at their optimal operational temperature, preventing moisture condensation on crystal's faces.

Because of their compact design, Heatpoint ovens can be easily installed into tight spaces. These ovens can be mounted in any standard one-inch optics positioning mount.

Heatpoints are available in two sizes: HP15 accepts crystals up to 15 mm in length, while slightly longer HP30 fits crystals up to 30 mm in length. The exact aperture of the crystal must be specified when ordering, as a special adapter is made for the installation.

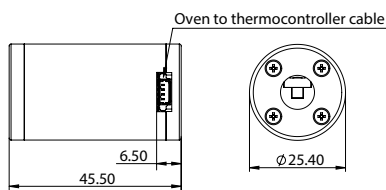
Each oven is made exactly for specific crystal aperture size, so it cannot be used for different size crystals.



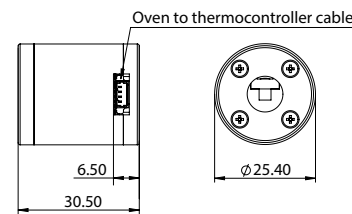
Heatpoint HP30



Heatpoint HP15



HP30 dimensions



HP15 dimensions

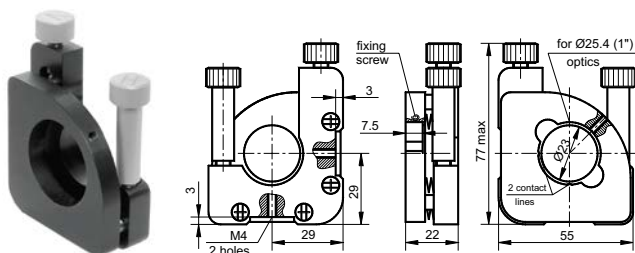


Heatpoint HP30 with thermocontroller

Specifications

MODEL	HP15	HP30
Crystal length (max)	15 mm	30 mm
Crystal aperture (max)	6 × 6 mm	
Temperature tuning range	25 – 70 °C	
Temperature tuning step	0.1 °C	
Long-term stability	± 0.1 °C	
Temperature ramp rate	3 °C/min	
Powering requirements	12 V DC	
Power consumption (P _{MAX})	6 W	
Power connector	2.1/5.5 mm	
Power adaptor (included)	90 – 264 V AC, 47 – 66 Hz, 12 V DC	
Dimensions (oven)	Ø 25.4 × 30.5 mm	Ø 25.4 × 45.5 mm
Dimensions (thermocontroller)	60 × 14 × 7.5 mm	
Distance (wiring length) from oven to thermocontroller	250 mm	

Related products



Positioning mount 840-0193

OVEN FOR NONLINEAR CRYSTALS – CH8

CH8 is compact oven with built-in thermocontroller for nonlinear crystals to keep them at stabilized temperature in range 30...80 °C. It is ideal for larger aperture crystals like KD*P. The crystals with up to 15 × 15 mm dimensions can be mounted. Each oven is made exactly for specific

crystal aperture size, so it cannot be used for different size crystals. CH8 crystal oven can be used with temperature preset at the factory or customer has the possibility to adjust temperature in the range 30 – 80 °C via CAN interface.



Specifications

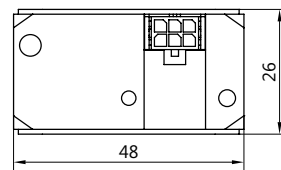
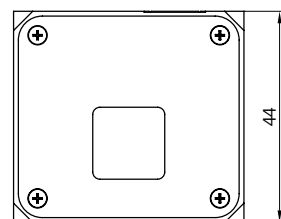
MODEL	CH8-20	CH8-30	CH8-50
Temperature range	30 – 80 °C		
Maximum crystals dimensions	15×15×20 mm	15×15×30 mm	15×15×50 mm
Temperature stability	better than ± 0.05 °C		
Power consumption	<6 W	<6 W	<9 W
Control interface	CAN		
Crystal center position above pad	16 mm		
Dimensions, W×H×D	48×44×26 mm	48×44×36 mm	48×44×56 mm

Specifications are subject to changes without advance notice.

Ordering information

CODE *	DESCRIPTION, FEATURES
OVENS WITH PRESET TEMPERATURE (must be specified before ordering)	
CH8-20-y/y-PS	CH8 oven (crystal length up to 20 mm) with power supply
CH8-30-y/y-PS	CH8 oven (crystal length up to 30 mm) with power supply
CH8-50-y/y-PS	CH8 oven (crystal length up to 50 mm) with power supply
OVENS WITH ADJUSTABLE TEMPERATURE CONTROL (30 – 80 °C)	
CH8-20-y/y-CAN	CH8 oven (crystal length up to 20 mm) with CAN-USB converter and power supply
CH8-30-y/y-CAN	CH8 oven (crystal length up to 30 mm) with CAN-USB converter and power supply
CH8-50-y/y-CAN	CH8 oven (crystal length up to 50 mm) with CAN-USB converter and power supply
MOUNTING ACCESSORIES	
MS-1	Two axis tilt adjustment 5 degrees range

* y/y – indicates crystal size, sizes 3×3, 4×4, ..., 15×15 mm are standard.



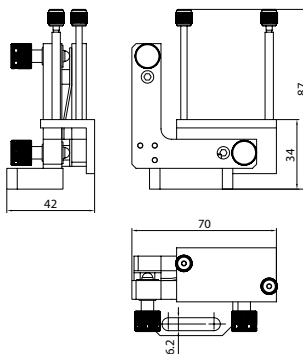
CH8-20 dimensions

Related products

Mounts for fine tuning of CH8 crystal ovens angle. The tuning range is ± 2.5°.



Mount MS-1



Mount MS-1 outline drawing



Your partner for photonics innovations!



EKSMA Optics, UAB
Mokslininku St. 11
08412, Vilnius, Lithuania

info@eksmaoptics.com
Tel.: +370 5 272 99 00

www.eksmaoptics.com