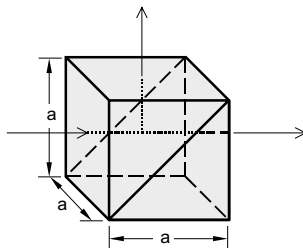


## NON-POLARIZING BROADBAND CUBE BEAMSPLITTERS

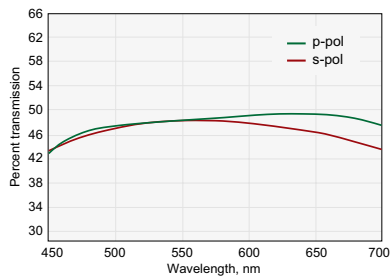
### Features

- Cemented for low power applications
- Typical damage threshold:  
>0.1 J/cm<sup>2</sup>, 10 ns, 10 Hz at 1064 nm
- Four sides broadband antireflection coated:  
R < 1% @ 450 – 700 nm or R < 1% @ 750 – 1100 nm



### Specifications

Material	BK7
Size tolerance	±0.25 mm
Surface quality	40 – 20 scratch & dig
Surface flatness	λ/4 at 633 nm
Beam deviation	<5 arcmin
Clear aperture	>80% of size
Absorption	<10%
Reflection/Transmission ratio	50/50 ± 5%
Transmission	T <sub>p</sub> = T <sub>s</sub> = 45 ± 5%

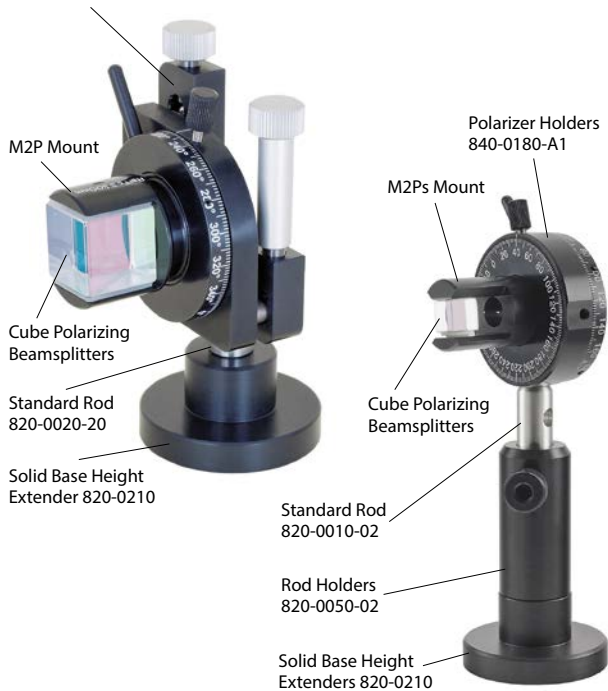


Typical transmission curve @ 450 – 700 nm

Operating wavelength, nm	Size, mm	Unmounted		Mounted	
		Catalogue number	Price, EUR	Catalogue number	Price, EUR
450 – 700	10 × 10	351-0107	135	351-0107-M2Ps	185
450 – 700	15 × 15	351-0157	150	351-0157-M2Ps	205
450 – 700	20 × 20	351-0207	155	351-0207-M2P	225
450 – 700	25 × 25	351-0257	170	351-0257-M2P	245
750 – 1100	10 × 10	351-0108	135	351-0108-M2Ps	185
750 – 1100	15 × 15	351-0158	150	351-0158-M2Ps	205
750 – 1100	20 × 20	351-0208	155	351-0208-M2P	225
750 – 1100	25 × 25	351-0258	170	351-0258-M2P	245

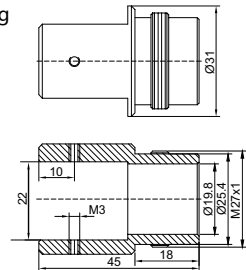
### Mounting Suggestion

Adjustable Polarizer Holder of Side Driver 840-0195



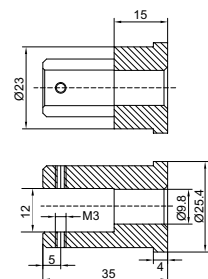
### Mounting

Example of **M2P** mount for Cube Polarizing Beamsplitters of 20×20 mm standard dimensions.



M2P mount can be used with 840-0180, 840-0195, 840-0020.

Example of **M2Ps** mount for Cube Polarizing Beamsplitters of 10×10 mm dimensions.



M2Ps mount can be used with 840-0180, 840-0020.

Drawings of M2P and M2Ps for prisms of other dimensions are available on request.