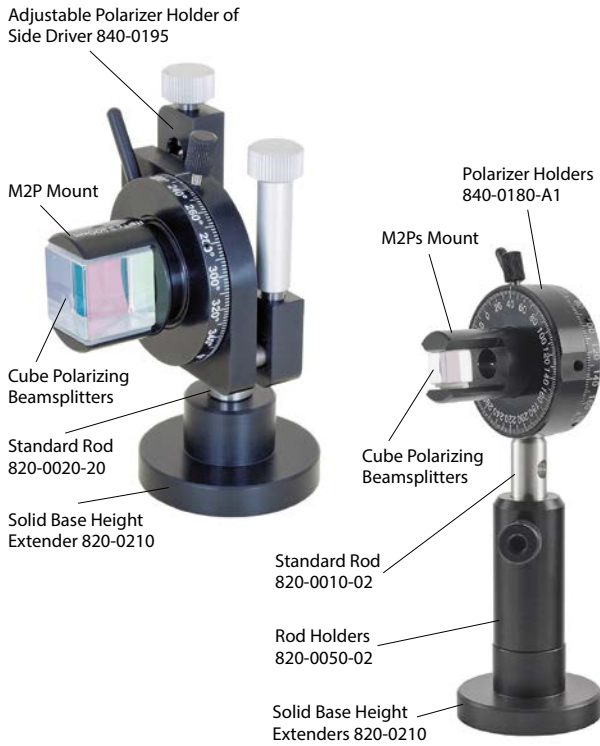
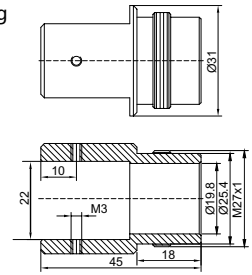


**MOUNTING SUGGESTION**



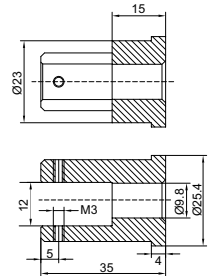
**MOUNTING**

Example of M2P mount for Cube Polarizing Beamsplitters of 20x20 mm standard dimensions.



M2P mount can be used with 840-0180, 840-0195, 840-0020.

Example of M2Ps mount for Cube Polarizing Beamsplitters of 10x10 mm dimensions.



M2Ps mount can be used with 840-0180, 840-0020.

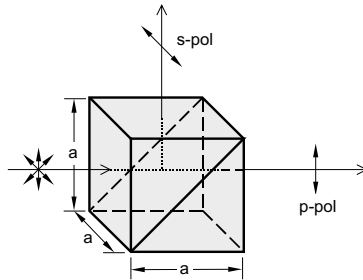
Drawings of M2P and M2Ps for prisms of other dimensions are available on request.

**HIGH ENERGY POLARIZING CUBE BEAMSPLITTERS**

**FEATURES**

- Optically contacted for high power applications
- Typical damage threshold: >15 J/cm<sup>2</sup>, 10 ns, 10 Hz at 1064 nm
- Precision surface quality
- High extinction ratio

The four outer faces are all anti-reflection coated.



**SPECIFICATIONS**

Material	UVFS
Size	12.7x12.7x12.7 mm
Size tolerance	±0.2mm
Extinction ratio	> 1:500
Surface quality	20 – 10 scratch & dig (MIL-PRF-13830B)
Wavefront distortion	λ/10 at 633 nm
Beam deviation	<3 arcmin
Clear aperture	>85% of size
Reflection s-polarization	>99.5%
Transmission p-polarization	>97% for laser line >90% for broadband

**HOUSING ACCESSORIES**

for unmounted cube polarizing beamsplitters

Prism Holders  
840-0160, 840-0170

Find more at  
EksmaOptics.com



Operating wavelength, nm	Laser Damage threshold, 10 ns, 10 Hz	Unmounted		Mounted	
		Catalogue number	Price, EUR	Catalogue number	Price, EUR
355	>3 J/cm <sup>2</sup> at 355 nm	435-1127	375	435-1127-M2Ps	425
532	>6 J/cm <sup>2</sup> at 532 nm	435-1121	350	435-1121-M2Ps	400
800	>8 J/cm <sup>2</sup> at 800 nm	435-1122	350	435-1122-M2Ps	400
1064	>15 J/cm <sup>2</sup> at 1064 nm	435-1123	350	435-1123-M2Ps	400
420 – 680	>1 J/cm <sup>2</sup> at 532 nm	436-1121	375	436-1121-M2Ps	425
700 – 1080	>2 J/cm <sup>2</sup> at 1064 nm	436-1123	375	436-1123-M2Ps	425