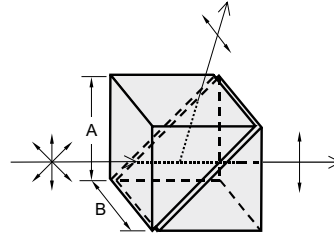


GLAN LASER POLARIZING PRISMS

- Transmit a linearly polarized extraordinary beam without deviation from its initial direction
- Reflect an ordinary ray out of the prism into either the black glass or the escape port
- Air-spaced prisms
- Available with two, one or no escape ports in mounts for extra power capacity



We also provide Glan Thompson, Beamsplitting Thompson prisms, Beam Displacers, Laser Polarizing Beamsplitters, etc.

Please contact us for more information.

Glan laser polarizers are manufactured from the finest optical grade natural calcite or α -BBO. They are useful in applications requiring a high degree of polarization purity, high total transmission and low, medium or high power requirements.

Natural Calcite Glan Laser Prisms

SPECIFICATIONS

Material	Natural calcite
Surface quality	40-20 scratch & dig (MIL-PRF-13830B)
Wavefront distortion	$\lambda/4$ at 633 nm
Beam deviation	<3 arcmin
Wavelength range	350 – 2100 nm
Extinction ratio	1:10 ⁻⁵
Laser damage threshold	>5 J/cm ² , 10 ns pulses, 1064 nm

Catalogue number		Standard dimensions	Price, EUR	
unmounted	mounted	A × B, mm	unmounted	mounted
440-2010	440-2010-M2Ps	10 × 10	475	525
440-2012	440-2012-M2Ps	12 × 12	575	625
440-2014	440-2014-M2Ps	14 × 14	790	840
440-2020	440-2020-M2P	20 × 20	1900	1950

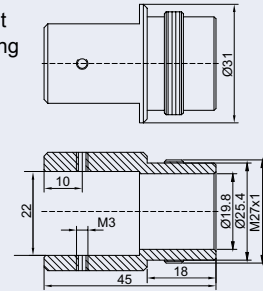
Mounting Suggestion

Adjustable Polarizer Holder of Side Driver 840-0195



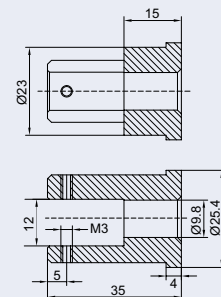
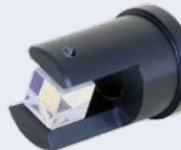
MOUNTING

Example of **M2P** mount for Glan Laser Polarizing prisms of 20×20 mm standard dimensions.



M2P mount can be used with 840-0180, 840-0195, 840-0020.

Example of **M2Ps** mount for Glan Laser Polarizing prisms of 10×10 mm dimensions.



M2Ps mount can be used with 840-0180, 840-0020.

Drawings of M2P and M2Ps for prisms of other dimensions are available on request.