

## UV FS BICONCAVE LENSES

Focal length F, mm	Diameter D, mm	Centre thickness CT, mm	Edge thickness ET, mm	Radius, mm	Catalogue number	Price, EUR
-12.7	12.7	3.7	6.7	-12.6	114-1104E	49
-25.0	12.7	2.8	4.0	-24.2	114-1108E	49
-30.0	12.7	3.0	4.0	-29.0	114-1110E	49
-50.0	12.7	2.6	3.2	-48.0	114-1114E	49
-75.0	12.7	2.7	3.1	-71.8	114-1118E	49
-100.0	12.7	2.8	3.0	-95.5	114-1122E	47
-25.0	25.4	5.3	12.0	-24.6	114-1204E	71
-30.0	25.4	3.0	7.5	-29.0	114-1205E	71
-50.0	25.4	2.6	6.0	-48.0	114-1208E	71
-75.0	25.4	3.8	6.1	-71.9	114-1212E	71
-100.0	25.4	3.6	5.3	-95.7	114-1216E	71
-150.0	25.4	4.4	5.3	-143.4	114-1220E	71
-200.0	25.4	3.0	3.8	-190.7	114-1224E	70

Please contact us for other size, focus or precision requirements.

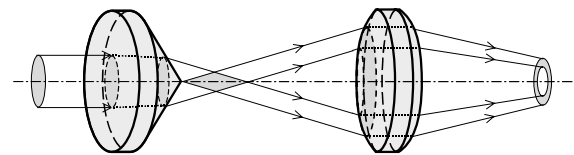
## CONICAL LENSES (AXICONS)

### Features

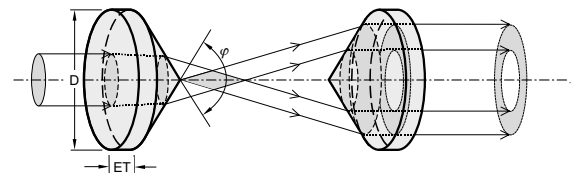
- Precision and standard grade axicons
- Can be made from most optical materials
- Can be supplied with AR and BBAR coatings

We can supply custom cutting, edging, coating or complete fabrication if required. If you cannot find your axicons needed, please send your specification or drawings for a custom quotation.

An axicon with a spherical lens produces an annular focus.



Two axicons together produce a thick-walled hollow "pipe" of light.



## PRECISION GRADE PLANO-CONVEX AXICONS

Apex angle $\phi$ , deg	Diameter D, mm	Edge thickness ET, mm	Centre thickness CT, mm	Catalogue number	Price, EUR
90	25.4	3.5	16.2	131-1290	360
130	25.4	3.5	9.4	131-1230	360
140	25.4	3.5	8.1	131-1240	360
160	25.4	3.5	5.7	131-1260	360
165	25.4	3.5	5.2	131-1265	360
170	25.4	3.5	4.6	131-1270	360
175	25.4	3.5	4.1	131-1275	360
176	25.4	3.5	3.9	131-1276	360
177	25.4	3.5	3.8	131-1277	360
178	25.4	3.5	3.7	131-1278	360
179	25.4	3.5	3.6	131-1279	360
160	50.8	5	9.4	131-1560	685
170	50.8	5	7.2	131-1570	685
176	50.8	5	5.9	131-1576	685
178	50.8	5	5.4	131-1578	685
179	50.8	5	5.2	131-1579	685

### Specifications

Material	UVFS
Surface quality	40 – 20 scratch & dig (MIL-PRF-13830B)
Clear aperture	90% of the diameter
Diameter tolerance	+0.00 / -0.1 mm
Angle tolerance	$\pm 0.05^\circ$ ( $\pm 3$ arcmin)
Surface irregularity	S1 (conical): $\pm 0.5\mu\text{m}$ S2 (flat): $\lambda/4$ @ 633 nm
Apex rounding	$< \varnothing 1$ mm

### Housing accessories

Universal Adjustable Lens/Optics Mount 830-0035

Find more at [EksmaOptics.com](http://EksmaOptics.com)



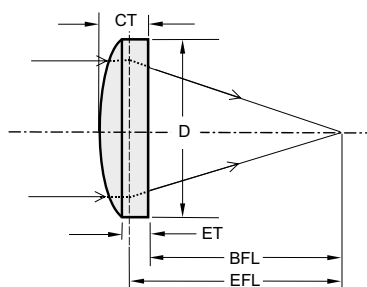
## STANDARD PLANO-CONVEX AXICONS

Apex angle $\phi$ , deg	Diameter D, mm	Edge thickness ET, mm	Centre thickness CT, mm	BK7		UV FS	
				Catalogue number	Price, EUR	Catalogue number	Price, EUR
140	25.4	8	12.6	130-0240	160	130-1240	283
160	25.4	8	10.2	130-0260	160	130-1260	283
165	25.4	8	9.7	130-0265	160	130-1265	283
170	25.4	8	9.1	130-0270	160	130-1270	283
175	25.4	8	8.6	130-0275	160	130-1275	283
178	25.4	8	8.2	130-0278	160	130-1278	283

## Specifications

Material	BK7, UV FS
Surface quality	60 – 40 scratch & dig (MIL-PRF-13830B)
Clear aperture	90% of the diameter
Diameter tolerance	+0.00 / -0.12 mm
Angle tolerance	$\pm 0.5^\circ$
Surface irregularity	S1 (conical): $\pm 2.5 \mu\text{m}$ S2 (flat): $\lambda @ 633 \text{ nm}$

## PRECISION ASPHERICAL LENSES



Aspherical lenses are designed to reduce spherical aberration. Complex multi-lens systems designed for compensation of spherical aberration can often be replaced with a single aspheric lens. We can produce aspherical lenses of custom design using your drawings or specifications in our CNC lens polishing facility.

## Specifications

Standard material [Refractive index]	N-BK7 [1.517] S-LAH64 [1.788] UVFS [1.453]
Design wavelength	780 nm
Surface quality	40 – 20 scratch & dig (uncoated)
Clear aperture	>90% of diameter
Diameter tolerance	+0.0 / -0.05 mm
Bevel	0.3 mm max @ $45^\circ$
Center thickness tolerance	$\leq 0.05 \text{ mm}$
EFL tolerance	$\leq 0.1\%$
Asphere figure error P-V	$\pm 1 \mu\text{m}$
Surface form deviation RMS	$\leq 0.5 \mu\text{m}$

Aspheric lenses with surface figure error P-V  $< 0.6 \mu\text{m}$  are available on request.

Substrate	D, mm	EFL, mm	BFL, mm	CT, mm	CA, mm	NA	Catalogue number	Price, EUR
S-LAH64	12.5	10	7.6	4.3	11.3	0.544	116-1210	130
UVFS	12.7	20	17	4.4	11.4	0.275	117-1220	245
UVFS	12.7	25	22	3.8	11.4	0.223	117-1225	245
N-BK7	12.5	25	22.4	4.0	11.3	0.227	115-1225	130
UVFS	12.7	15	11.4	5.3	11.4	0.356	117-1215	245
UVFS	12.7	30	27.6	3.5	11.4	0.187	117-1230	245
UVFS	12.7	40	36.2	5.5	11.4	0.144	117-1240	245
S-LAH64	25	20	15.7	7.6	22.5	0.543	116-2520	170
N-BK7	25	50	46	6.0	22.5	0.232	115-2550	170
N-BK7	25	32	27.4	7.0	22.5	0.359	115-2532	170
UVFS	25.4	20	9.9	14.7	22.9	0.496	117-2520	320
UVFS	25.4	25	17.8	10.5	22.9	0.416	117-2525	320
UVFS	25.4	30	24.5	8.0	22.9	0.398	117-2530	320
UVFS	25.4	40	35.9	6.0	22.9	0.292	117-2540	320
UVFS	25.4	50	46.6	5.0	22.9	0.232	117-2550	320
UVFS	25.4	60	56.6	5.0	22.9	0.192	117-2560	320
S-LAH64	50	40	31.3	15.5	45.0	0.554	116-5040	310
N-BK7	50	100	93.4	10.0	45.0	0.237	115-5100	310
UVFS	50.8	50	37.0	18.9	45.7	0.416	117-5050	590
UVFS	50.8	60	49.5	15.2	45.7	0.356	117-5060	570
UVFS	50.8	75	66.7	12.1	45.7	0.292	117-5075	560
UVFS	50.8	100	93.6	9.4	45.7	0.223	117-5100	550