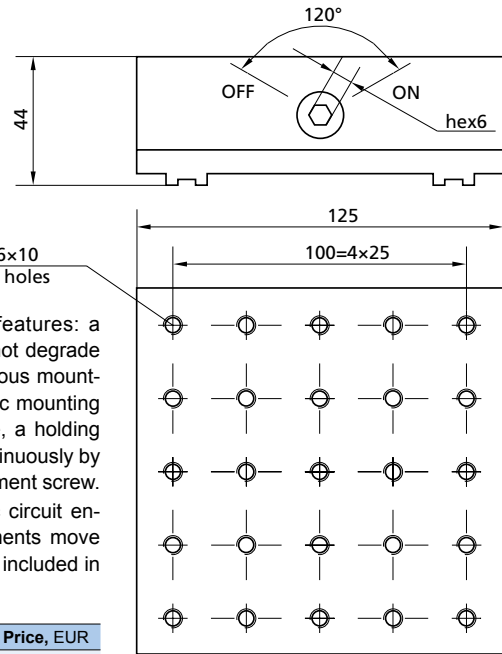


820-0140

LOW-PROFILE MAGNETIC BASE



- Highest holding force – up to 140 kg
- Nonmagnetic mounting surface
- M6 mounting holes pattern on 25 mm centers
- Low field leakage

Low-profile Magnetic Base features: a high holding force that does not degrade with time, a low profile, generous mounting provisions, a non magnetic mounting surface of the magnetic base, a holding force which you may vary continuously by the easy to reach inset adjustment screw. An exclusive stable magnetic circuit ensures that the magnetic elements move linearly. A Hex Key of 6 mm is included in each magnetic base.

Code	Weight, kg	Price, EUR
820-0140	2.8	332

820-0150

COMPACT MAGNETIC BASES

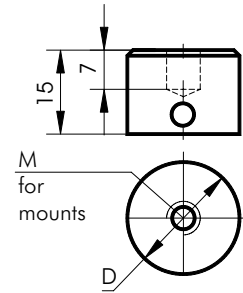


820-0150-08



820-0150-02

Small components may be quickly positioned on ferromagnetic optical tables and breadboards or translation stages using Compact Magnetic Bases 820-0150.



Code	D, mm	M	Holds load up to, kg	Weight, kg	Price, EUR
820-0150-02	19	M6	5	0.03	10
820-0150-04	19	M4	5	0.03	10
820-0150-06	27	M6	10	0.06	16
820-0150-08	27	M4	10	0.06	16

OPTICAL TABLES

BRACKETS & RAILS

BASE MOUNTS & ACCESSORIES

OPTICAL MOUNTS

OPTICAL POSITIONERS

BASE POSITIONERS

TRANSLATION & ROTATION STAGES

ADJUSTMENT SCREWS

MOTORIZED POSITIONERS