

992 • 993 • 994

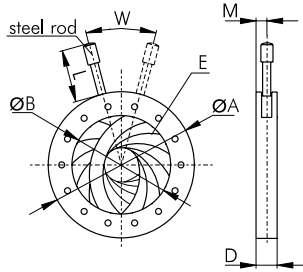
UNMOUNTED IRIS DIAPHRAGMS

EKSMA OPTICS offers three types of unmounted Iris Diaphragms: Zero aperture Iris Diaphragms (992 series), standard iris diaphragms with retainer (993 series), standard iris diaphragms screwed (994 series).

Iris diaphragm provides a continuously variable field stop for controlling the focal

length of an optical system or for adjusting the diameter of a beam. Iris diaphragms enable smooth operation over the lever travel, from maximum to minimum aperture. Lever actuators of the iris diaphragms are either of plastic tab or steel pin. Zero Aperture iris diaphragms provide total light extinction.

Zero Aperture Iris Diaphragms (992 Series)



AR - Leaves with AR coating, for temperatures up to 180 °C

N - Springsteel, black finished, for temperatures up to 250 °C

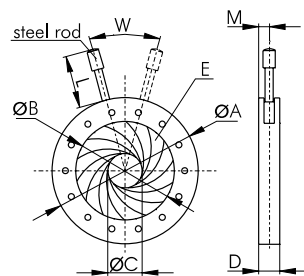
H - Stainless steel, for temperatures up to 400 °C

HT - High-temperature alloy for up to 1000 °C

Code	A, Outer Diameter, mm	B, Max. Aperture, mm	D, Thickness, mm	E, Number of Leaves	Tab/ Pin	L, mm	M, mm	W, mm	N/H/HT
992-2008	20	8	4	8	Tab	6	2	90	H/N
992-2512	25	12	5	12	Pin	12	2.5	96	H/N
992-2915	29	15	5	12	Pin	12	2.5	97	H/N
992-3922	39	22	5	14	Pin	12	2.5	99	H/N
992-4830	48	30	5	14	Tab	11	2.5	100	H/N/HT
992-6940	69	40	6.5	14	Tab	16	3.3	96	H/N/HT
992-7950	79	50	7	18	Pin	20	3.5	100	H/N/HT
992-9460	94	60	9	16	Tab	25	4.5	98	H/N/HT
992-1177	117	75	9.5	18	Tab	53	4.8	97	H/N/HT
992-1258	125	85	9.5	18	Tab	50	4.8	98	H/N/HT
992-1359	135	98	8.5	20	Tab	50	4.3	102	H/N/HT
992-1601	160	113	13	20	Pin	18	6.5	99	N/H/NT

Please add letter H, N or HT to code to indicate temperature needed.

Iris Diaphragms with Retainer (993 Series)



AR - Leaves with AR coating, for temperatures up to 180 °C

N - Springsteel, black finished, for temperatures up to 250 °C

H - Stainless steel, for temperatures up to 400 °C

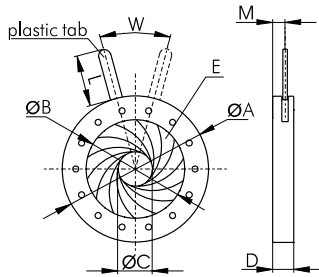
HT - High-temperature alloy for up to 1000 °C

Code	A, Outer Diameter, mm	B, Max. Aperture, mm	C, Min. Aperture, mm	D, Thickness, mm	E, Number of Leaves	Tab/ Pin	L, mm	M, mm	W, mm	AR/N/H
993-1005	10	5	0.5	4	8	Pin	4	2.4	78	AR/N
993-1207	12	7	0.5	4	8	Pin	6	2.4	88	AR/N
993-1482	14	8.2	0.8	4	8	Pin	6	2.4	80	N
993-1488	14.8	8	0.5	4	8	Pin	6	2.5	77	N
993-1610	16	10	1	4	10	Pin	6	2.4	83	N
993-1912	19.8	12	1	5	11	Pin	10	2.7	89	AR/H/N
993-2214	22	14	1	5	10	Pin	10	2.7	94	AR/N
993-2415	24	15	1	5	12	Pin	13	2.7	89	H/N
993-2818	28	18	1	5	12	Pin	13	2.7	90	AR
993-3020	30	20	1.2	5.5	12	Pin	13	2.9	90	AR/H/N
993-1201	19.5	12	1.5	5	11	Pin	3.5	2.5	-	AR

Code	A, Outer Diameter, mm	B, Max. Aperture, mm	C, Min. Aperture, mm	D, Thickness, mm	E, Number of Leaves	Tab/ Pin	L, mm	M, mm	W, mm	AR/N/H
993-3322	33	22	1.5	5.5	14	Pin	13	2.9	94	N
993-3725	37	25	1.5	5.5	13	Pin	12	-	-	AR <small>new</small>
993-3725	37	25	1.5	5.5	15	Pin	13	3	93	N
993-4027	40	27	1.5	5.5	12	Pin	13	3	90	AR/H/N
993-4330	43	30	1.5	5.5	14	Pin	13	3	92	AR/H/N
993-4934	49	34	2	6.5	14	Pin	13	3.5	91	AR/H
993-5036	50	36	2.5	6	16	Pin	13	3.2	92	N
993-5337	53	37	2.5	6	16	Pin	13	3.2	89	N
993-4201	58	42	2.5	6.6	18	Pin	12	-	-	AR <small>new</small>
993-5842	58	42	2.5	6.5	18	Pin	13	3.3	93	N
993-6040	60	40	2.5	6.5	12	Pin	13	3.3	88	N
993-6445	64	45	2.5	7	14	Pin	13	3.8	92	H/N
993-7050	70	50	2.5	7	18	Pin	15	4	94	N
993-8260	82	60	4	8	17	Pin	13	4.4	91	H/N
993-1075	100	75	4	9	20	Pin	15	4.5	95	H/N
993-1181	110	81	3	10	16	Pin	15	5	94	AR
993-1290	120	90	3.5	12	20	Pin	15	6.5	97	AR
993-1398	130	98	4	12	20	Pin	20	6.5	97	H/N
993-1513	150	113	6	13	20	Pin	20	7.2	95	H/N
993-1612	165	120	6	15	18	Pin	20	7.9	94	H/N
993-1914	195	145	8	16	18	Pin	18	8.9	93	N

Please add letter AR, N or H to code to indicate temperature needed.

Screwed Iris Diaphragms (994 Series)



AR - Leaves with AR coating, for temperatures up to 180 °C

N - Springsteel, black finished, for temperatures up to 250 °C

H - Stainless steel, for temperatures up to 400 °C

HT - High-temperature alloy for up to 1000 °C

Code	A, Outer Diameter, mm	B, Max. Aperture, mm	C, Min. Aperture, mm	D, Thickness, mm	E, Number of Leaves	Tab/ Pin	L, mm	M, mm	W, mm	N
994-1508-N	15	8	1	5.3	9	Tab	5	2.3	81	N
994-1585-N	15.5	8.5	1	5.3	9	Tab	8	2.6	75	N
994-2214-N	22	14	1	6	10	Tab	12	3	90	AR/N
994-3118-N	31	18	1.5	6.5	11	Tab	10	3.4	85	N
994-4027-N	40	27	1.5	6.2	12	Tab	11	3.5	90	N
994-4830-N	48.5	30	1.2	7	10	Tab	10	3.6	86	N
994-6040-N	60	40	2.5	7.8	12	Tab	13	4.6	88	N
994-7050-N	70	50	2.5	7	18	Tab	13	4	94	N
994-8260-N	82	60	4	10	17	Tab	11	5.4	91	N