

960-0090 **MOTORIZED TRANSLATION STAGE**



- **Narrow**
- **Compact design**
- **Resolution 0.125 μm (1/8 step)**
- **X-Y-Z configurations available**
- **Motors of other types are available**

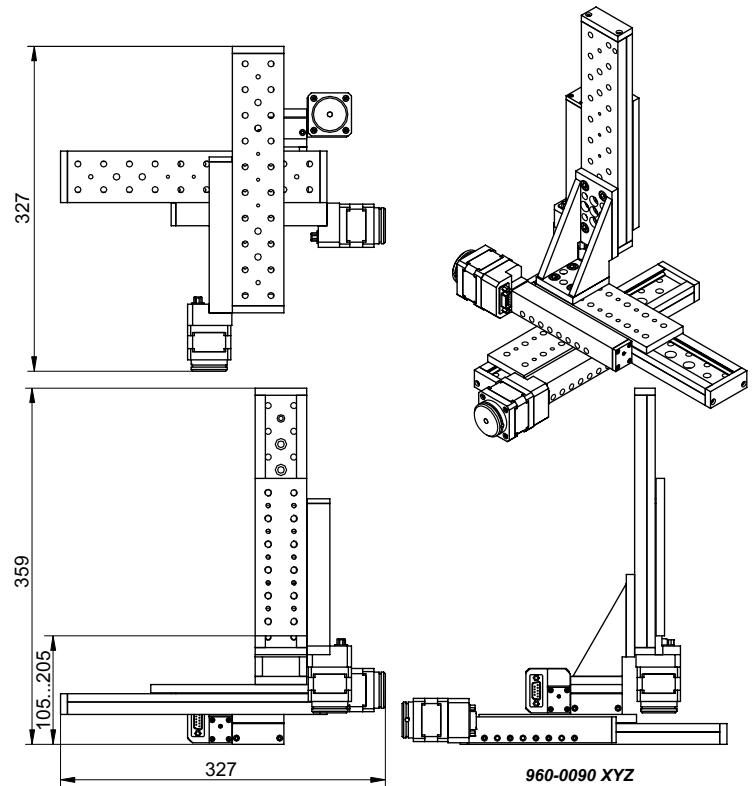
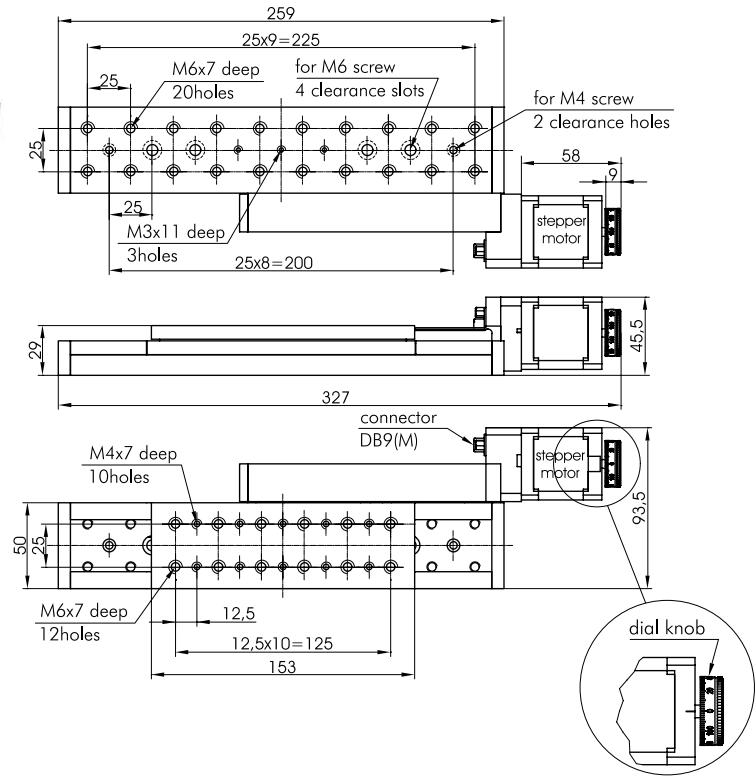
SPECIFICATIONS

| Model | 960-0090 | 960-0090-28 |
|-------------------------------|------------------|-------------|
| Travel range | 100 mm | |
| Lead screw pitch | 0.5 mm | |
| Resolution in full step* | 1 μm | |
| in 1/8 step* | 0.125 μm | |
| Reduction motor/screw | 2.5:1 | |
| Max. speed* | 5 mm/s | |
| Load capacity | | |
| Horizontal | 8 kg | |
| Vertical | 3 kg | |
| Motor connector | DB9(M) | HDB15(M) |
| Stepper motor | 4247 | 28 |
| Weight | 1.5 kg | |
| Assemblies: | | |
| X-Y | directly | |
| Z | 810-0160 | |
| Mechanical end limit switches | 2 | |
| Switch polarity | pushed is closed | |

***Test condition:**
 • 980-0030 controllers;
 • Power supply – 36 V.

| Code | Stepper motor | Price, EUR |
|--------------|---------------|------------|
| 960-0090 | 4247 | 923 |
| 960-0090-28 | 28 | – |
| 960-0090-XY | 4247 | 1846 |
| 960-0090-XYZ | 4247 | 2835 |

- RECOMMENDED CONTROLLERS**
- 980-0040-USB *see page 8.189*
 - 980-0030-RS232 *see page 8.188*



OPTICAL TABLES
 BRACKETS & RAILS
 BASE MOUNTS & ACCESSORIES
 OPTICAL MOUNTS
 OPTICAL POSITIONERS
 BASE POSITIONERS
 TRANSLATION & ROTATION STAGES
 ADJUSTMENT SCREWS
 MOTORIZED POSITIONERS