

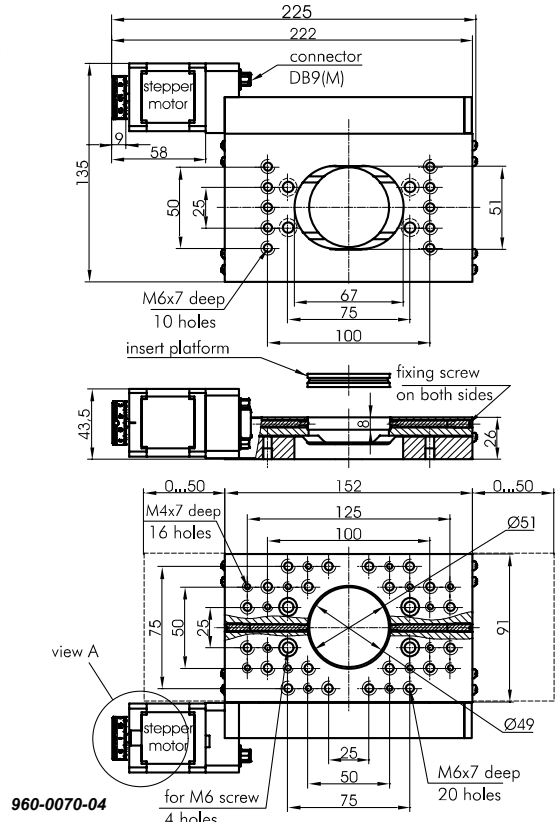
960-0070-04 MOTORIZED TRANSLATION STAGE



960-0070-04
with insert platform

Motorized Translation Stage 960-0070-04 is designed on the basis of 860-0070-04 translator. The movement is produced by a step motor through the reducing gear and a lead-screw. There are 1000 steps per millimeter. Individual units are accompanied by indication of electrical parameters and connection schemes of the motors. The motors have 200 steps per revolution. To drive the motor, we offer a range of controllers. Controllers can drive the motor in 1, 1/2, 1/4, 1/8 step division mode. There are microstepping controllers, available from other manufacturers, which divide a step into 10 parts. Mechanics of 960-0070-04 translation stage can be easily attached to any type of stepping motor or servo motor of your choice. Motorized translation stage motor or controller is available upon request.

Motorized Translation Stage 960-0070-04 with stepper motor 4247.

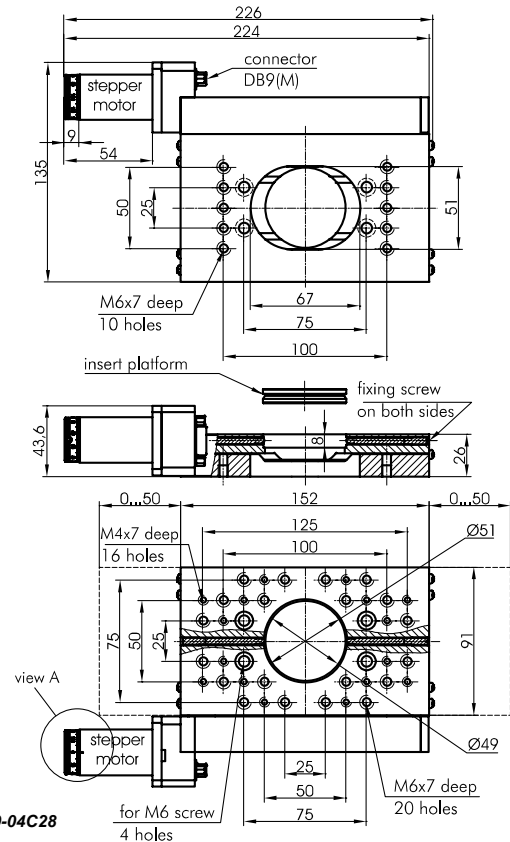
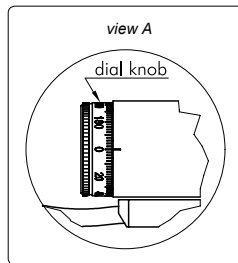


960-0070-04



960-0070-04C28
with insert platform

Motorized Translation Stage 960-0070-04C28 with stepper motor 28 with connector DB9(M) on motor itself.



960-0070-04C28

OPTICAL
TABLES

BRACKETS &
RAILS

BASE MOUNTS &
ACCESSORIES

OPTICAL
MOUNTS

OPTICAL
POSITIONERS

BASE
POSITIONERS

TRANSLATION &
ROTATION STAGES

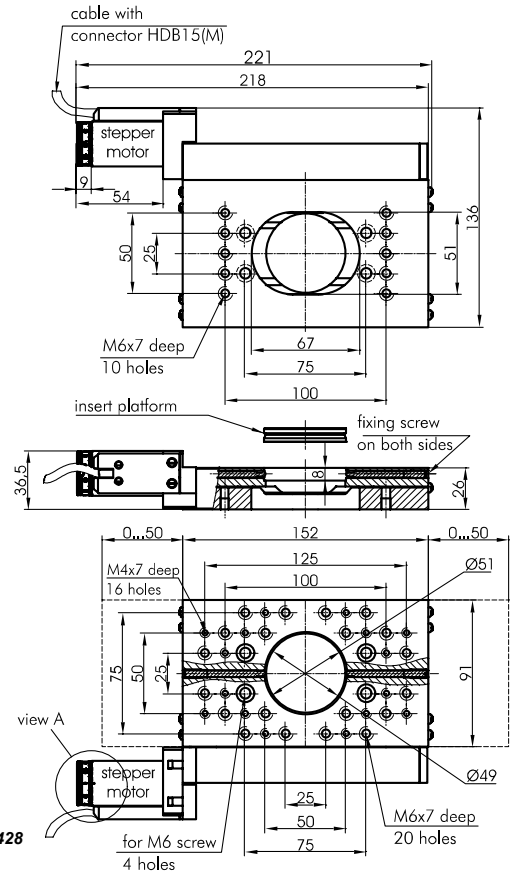
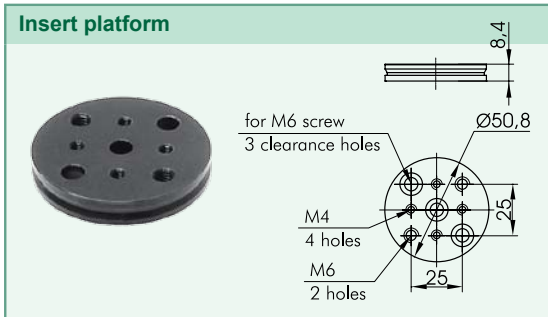
ADJUSTMENT
SCREWS

MOTORIZED
POSITIONERS

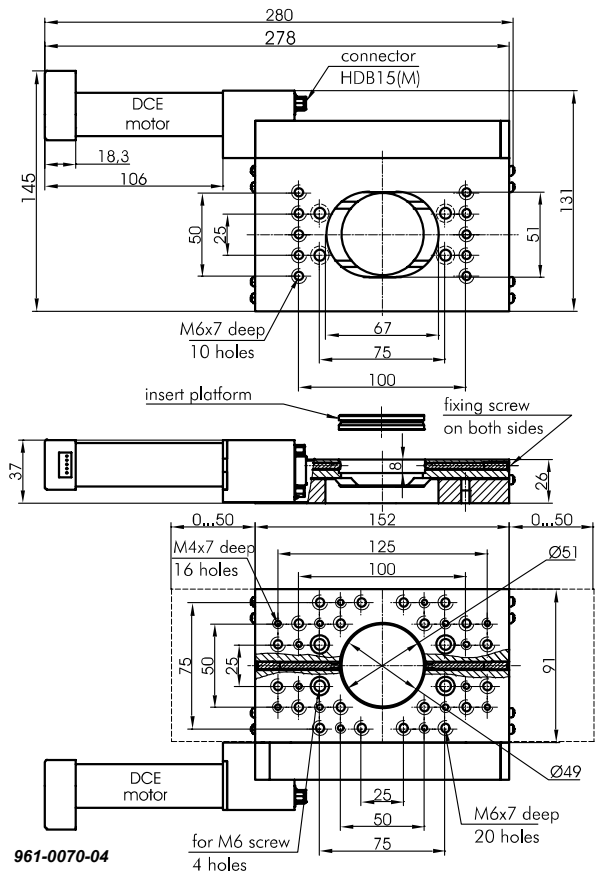


960-0070-0428

Motorized Translation Stage
960-0070-0428 with stepper
motor 28.



961-0070-04



SPECIFICATIONS

Model	960-0070-04	960-0070-04C28	960-0070-04Z8	961-0070-04
Travel range, mm			100	
Resolution in full step, μm	1	1	1	-
in 1/8 step, μm	0.125	0.125	0.125	-
Lead screw pitch, mm	0.5	0.5	0.5	0.5
Reduction motor/screw	2.5:1	2.5:1	2.5:1	11:1
Bi-direction repeatability *, μm	2	2	2	0.8
Minimal incremental motion, μm	-	-	-	0.02
Resolution(calculated), μm	-	-	-	0.023
Maximum speed, mm/s	5	5	5	5.5
Maximum load capacity				
Horizontal, kg			7	
Vertical, kg			3	
Mechanical end limit switches			2, pushed is closed	
Cable			1.6 m length	
Motor connector	DB9(M)	DB9(M)	HDB15(M)	HDB15(M)
Stepper motor	4247	28	28	-
DC motor	-	-	-	DCE RE25
Weight, kg	1.4	1.4	1.4	1.5
Price, EUR	1070	1070	1045	1407

* After backlash compensation. Backlash compensation value provided with each actuator.

RECOMMENDED CONTROLLERS

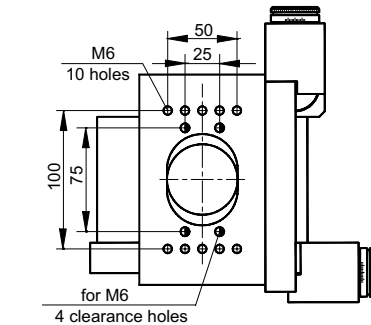


980-0040-USB
see page 8.189



980-0030-RS232
see page 8.188

Example of 960-0070-04 XYZ



To stack
960-0070-04 stages in X-Y-Z
coordinates you need a
connecting plate 810-0270 and
an angle bracket 810-0116.

Complementary Products

Code	Page
810-0116	8.25

