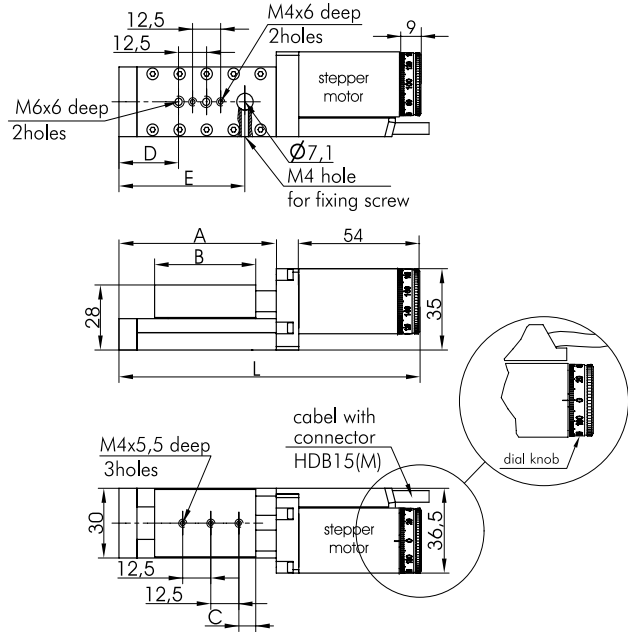


960-0060 NARROW (width 30 mm) MOTORIZED TRANSLATION STAGES



960-0060-02



- Narrow (30 mm)
- Compact design
- High guide way accuracy
- Lead screw pitch 0.25 mm
- Travel 10, 20, 25, 30 mm
- Optional travel 5, 6, 8 mm and other
- X-Y-Z configurations available

Motorized Translation Stages 960-0060 are created on the base of 860-0060 translators.

Mechanical parameters of the motorized stages are the same as of translators 860-0060. Resolution, speed and load capacity all depend on parameters of motor, leading gear, as well as on the controller and driving mode a user chooses to use.

For vertical (Z axis) mounting we offer angle bracket 810-0150. Custom brackets are available.

Two mechanical limit switches built into each translation stage used for emergency stop at ends of travel range or to establish a reference position with accuracy of several motor steps.

Motor position can be visually determined with accuracy of one step by reading a scale engraved on dial knob fitted on motor shaft (use encoder for monitoring exact position using PC).

Body and platform of 960-0060 are made of black finished aluminium. Functional parts are made of steel.

SPECIFICATIONS

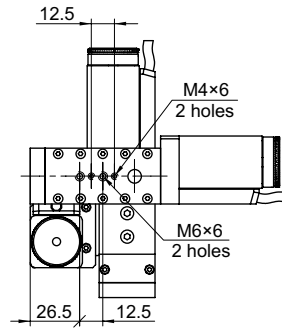
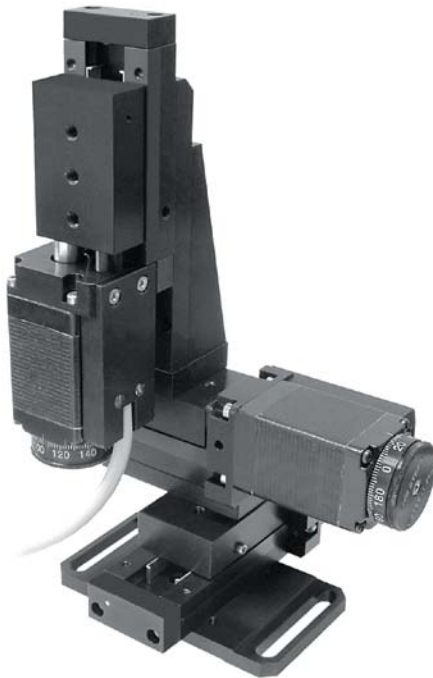
Model	960-0060-01	960-0060-02	960-0060-03	960-0060-04
Travel range, mm	10	20	25	30
Lead screw pitch, mm	0.25			
Resolution in full step*, µm	1.25			
Max. speed* mm/s	5			
Load capacity:	*Test condition: • 980-0030 controllers; • Power supply – 36 V.			
Horizontal, kg				
Vertical, kg	2			
Cable	integrated, 1.6 m length			
Motor connector	HDB15(M)			
Stepper motor	28			
Weight, kg	0.43	0.46	0.47	0.48
Assemblies:				
X-Y	810-0250	810-0250	810-0250	810-0250
Z	810-0150	810-0150	810-0150	810-0150

Complementary Products

Code	Page
810-0150	8.28
810-0250	8.112

Model	L, mm	A, mm	B, mm	C, mm	D, mm	E, mm	Price, EUR
960-0060-01	124	60	45	7.5	21.5	49	399
960-0060-02	134	70	45	7.5	26.5	56	402
960-0060-03	138	74	49	11	30.5	60	425
960-0060-04	144	80	55	11.5	36.5	66	439

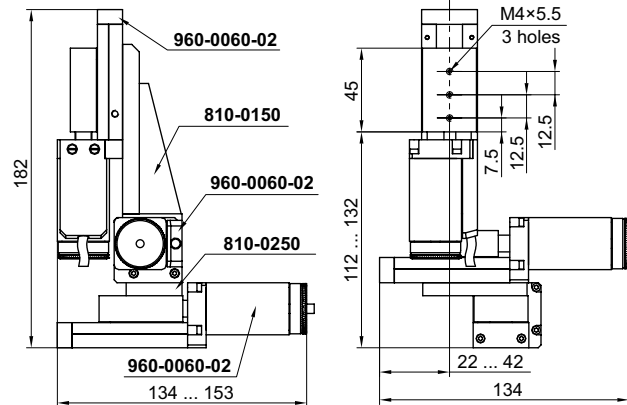
Example of 960-0060-02 XYZ



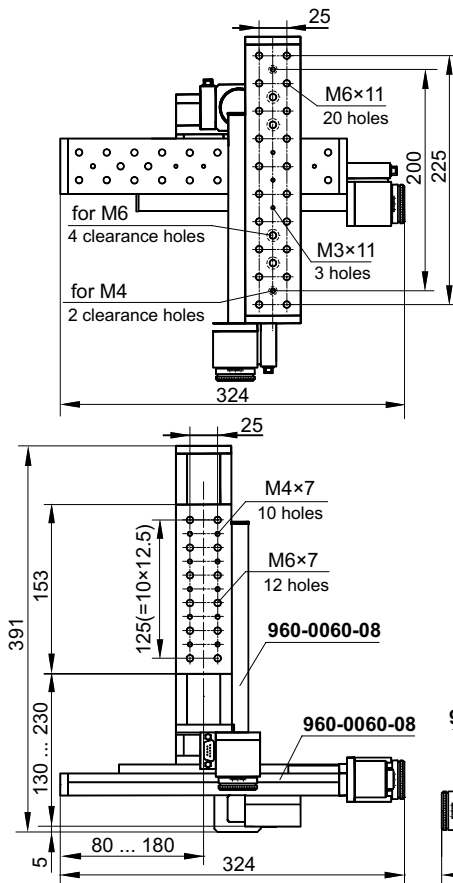
Accessories, like connection plates and angle brackets, required for assembly of 3 axes systems, and adapted to specific optical scheme, **we produce upon ordering.**

Complementary Products

Code	Page
810-0150	8.28
810-0250	8.112



Example of 960-0060-08 XYZ



Complementary Products

Code	Page
810-0160	8.30

OPTICAL TABLES

BRACKETS & RAILS

BASE MOUNTS & ACCESSORIES

OPTICAL MOUNTS

OPTICAL POSITIONERS

BASE POSITIONERS

TRANSLATION & ROTATION STAGES

ADJUSTMENT SCREWS

MOTORIZED POSITIONERS