

Base Positioners

850-0010 MULTI-AXES TILT PLATFORM



Multi-Axes Tilt Platform 850-0010 provides angular adjustment about two axes – tilting and in-plane rotation.

The mounting platform is rotated around kinematic pivot point by two micrometers. The out-of-plane tilting range is $\pm 2^\circ$ and the in-plane rotation ranges is $\pm 2.5^\circ$. Two micrometer screws are located side by side for a handy use. The adjustment movements are not calibrated, and they are uncoupled.

The platform has a 25 mm grid of M6 and M4 tapped holes.

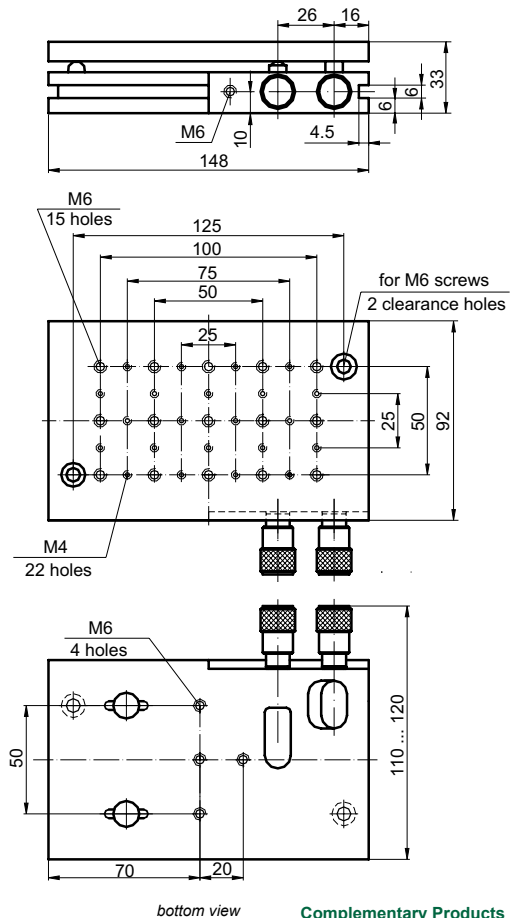
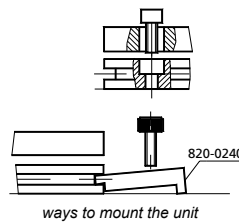
Two clearance holes $\varnothing 6.2$ mm are provided in the base of the unit. This allows to attach 850-0010 to tables and breadboards. Also you can clamp the base of the unit by Table Clamp 820-0240; this way you can place the unit on the table in any direction.

The tilt platform is made of black anodized aluminium.

SPECIFICATIONS

Tilt $\varnothing y$	$\pm 2^\circ$
Rotation $\varnothing z$	$\pm 2.5^\circ$
Load capacity	15 kg
Weight	1 kg

Code	Price, EUR
850-0010	188



Complementary Products

Code	Page
820-0240	8.43

Motorized version is available - 970-0090



SPECIFICATIONS

Tilt y	$\pm 2^\circ$
Rotation z	$\pm 2.5^\circ$
Resolution: in full step	1.25 μm
in 1/8 step	0.156 μm
Lead screw pitch	0.25 mm
Repeatability	1 μm
Maximum load capacity	10 kg
Type of actuator	970-0065
Cable	1.2 m length cable included
Motor connector	DB15(M)
Weight	1.3 kg