

820-0270 **HEX KEY**
820-0260 • 820-0280 **SCREWS**

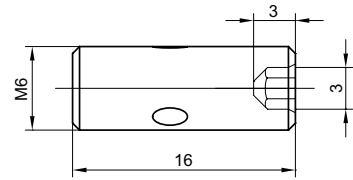


820-0270

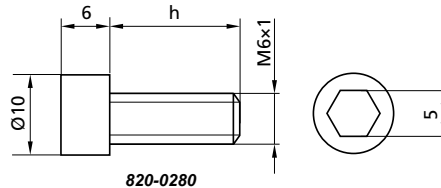
820-0260

The "L" shaped 820-0270 hex key is very convenient in all mounting situations. The 820-0260 screw is very useful for mounting of rods, rod holders, large rod 810-0040 directly to the table top or where M6-M6 connection is required. M6-M4 adapters are also available.

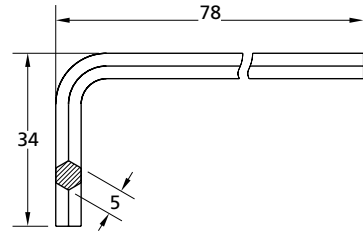
Code	Weight, kg	Price, EUR
820-0260	0.005	0.73
820-0270	0.020	0.73



820-0260



820-0280



820-0270



These hex socket head cap screws are available in different lengths.

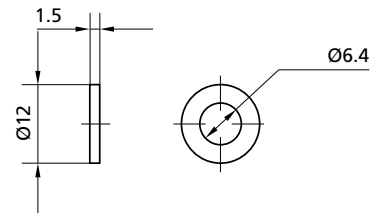
Code	Length h, mm	Weight, kg	Price, EUR
820-0280-01	10	0.004	0.08
820-0280-02	16	0.005	0.09
820-0280-03	20	0.006	0.10
820-0280-04	25	0.007	0.11
820-0280-05	30	0.008	0.12
820-0280-06	45	0.011	0.13
820-0280-07	50	0.012	0.14

820-0290 **WASHER**



A Washer is made of black finished steel and is used for protecting of surfaces from scratches and provides more stable tightening.

Code	Weight, kg	Price, EUR
820-0290	0.005	0.03



OPTICAL TABLES
 BRACKETS & RAILS
 BASE MOUNTS & ACCESSORIES
 OPTICAL MOUNTS
 OPTICAL POSITIONERS
 BASE POSITIONERS
 TRANSLATION & ROTATION STAGES
 ADJUSTMENT SCREWS
 MOTORIZED POSITIONERS