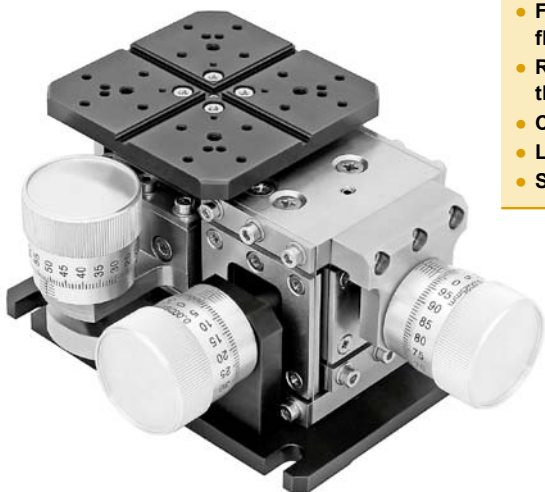


860-0210 FIBER COUPLING STAGE



- Fiber coupling stage of flexure design
- Rotating platform on the top
- Compact block design
- Long-term stability
- Smooth motion

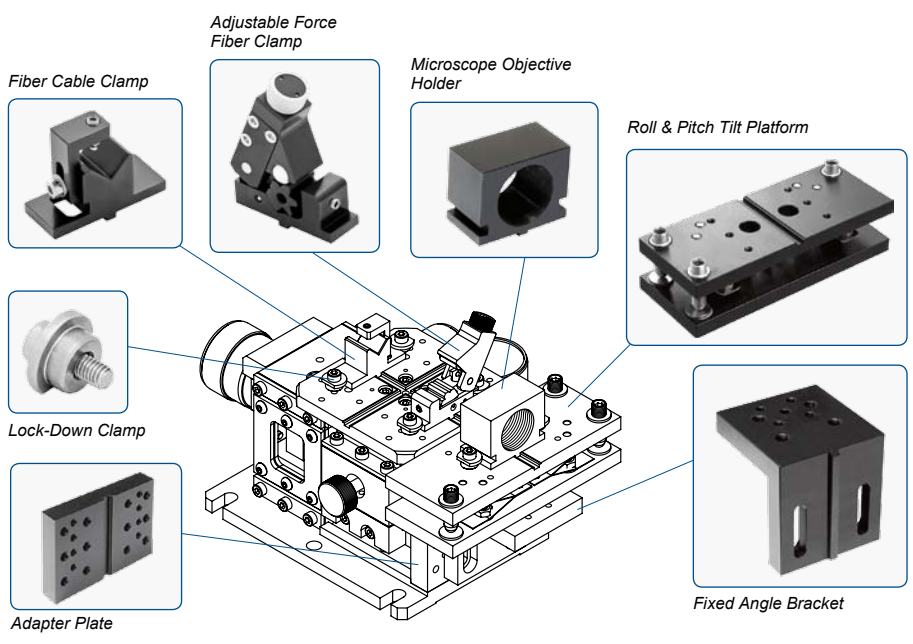
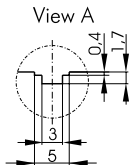
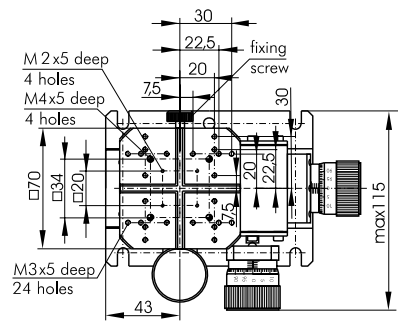
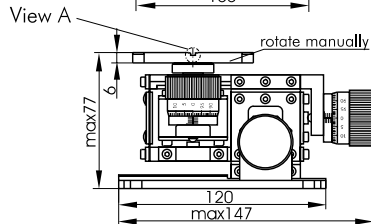
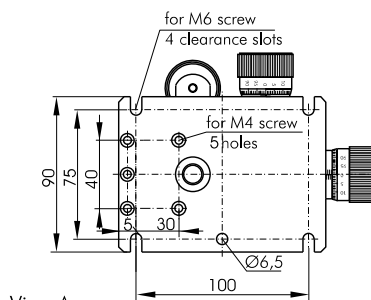
Code	Price, EUR
860-0210	660

Flexure stages 860-0210 are ideal for high precision device manipulation. This stage suits almost any micropositioning applications range, for example, from fiber launch systems for single-mode, multi-mode and polarization maintaining fibers as well as waveguide alignment, through to the manipulation of microstructures in bioscience. Fiber Coupling Stage of flexure compact block design with high-resolution micrometers ensures long-termed stability and good stiffness together with smooth motion without the severe limitations of stiction and friction. Flexure stages have a combination of overall size, travel, resolution, and low cost that makes them unique decision to meet the stringent require-

ments of photonics laboratory applications. Vacuum compatible versions are delivered on request. Also as an option fiber coupling stage could be provided with differential screws.

SPECIFICATIONS

Travel range in each XYZ direction	2 mm
Sensitivity	0.2 μm
Reading accuracy	1.25 μm (1/2 division)
Cross-Talk	20 μm/mm
Mechanical stability	flexure design with Stainless Steel Spring
Load capacity	1.5 kg
Weight	1.6 kg



OPTICAL TABLES

BRACKETS & RAILS

BASE MOUNTS & ACCESSORIES

OPTICAL MOUNTS

OPTICAL POSITIONERS

BASE POSITIONERS

TRANSLATION & ROTATION STAGES

ADJUSTMENT SCREWS

MOTORIZED POSITIONERS