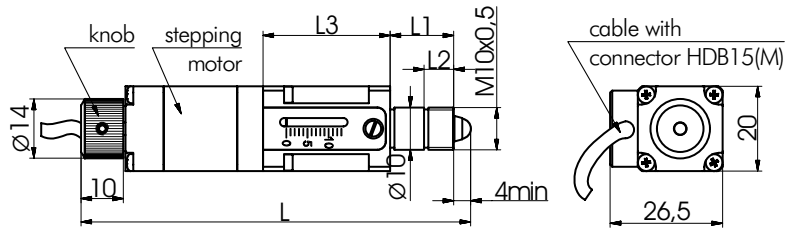


970-0050 **MOTORIZED ACTUATOR**



- Compact
- Manual drive with a knob
- Limit switch: optoelectronic couple
- Step motor controllers (USB, RS232, Manual) are offered separately
- Optional power supplies for higher voltages/speeds are available

- RECOMMENDED CONTROLLERS**
- 980-0040-USB *see page 8.189*
 - 980-0030-RS232 *see page 8.188*

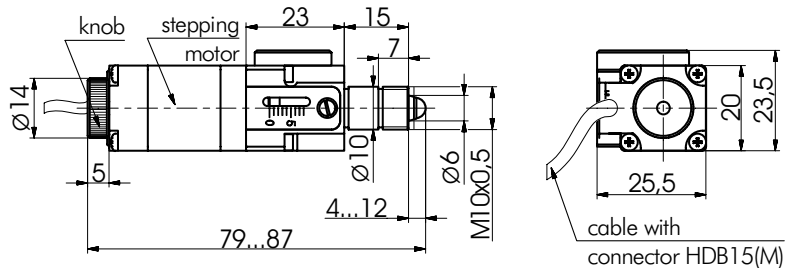
SPECIFICATIONS

Model	970-0050-15	970-0050-25
Travel range	13 mm	25 mm
Resolution		1.25 µm
Max. speed		6 mm/s
Lead screw pitch		0.25 mm
Nominal force		30 N
Tip shape		round
Cable	integrated, 1.2 m length	
Motor connector	HDB15(M)	
Stepper motor	20	
Weight	0.12 kg	0.15 kg

Model	L, mm	L1, mm	L2, mm	L3, mm	Weight, kg	Price, EUR
970-0050-15	92 ... 105	15	7	30	0.12	300
970-0050-25	101 ... 126	15	7	40	0.15	349
970-0050-10*	87 ... 100	10	4.5	30	0.12	-

* by request

970-0060 **COMPACT MOTORIZED ACTUATOR**

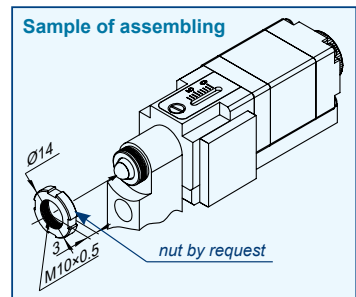


- Reduced size
- Manual drive with a knob
- Limit switch: optoelectronic couple
- Step motor controllers (USB, RS232, Manual) are offered separately
- Optional power supplies for higher voltages/speeds are available

- RECOMMENDED CONTROLLERS**
- 980-0040-USB *see page 8.189*
 - 980-0030-RS232 *see page 8.188*

SPECIFICATIONS

Travel range	8 mm
Resolution	1.25 µm
Lead screw pitch	0.25 mm
Nominal force	30 N
Tip shape	round. Flat on request
Weight	0.10 kg
Cable	integrated, 1.2 m length
Motor connector	HDB15(M)
Stepper motor	20



940-0060
modified kinematic mirror/beamsplitter mount with motorized actuator 970-0060 installed.
See page 7.155