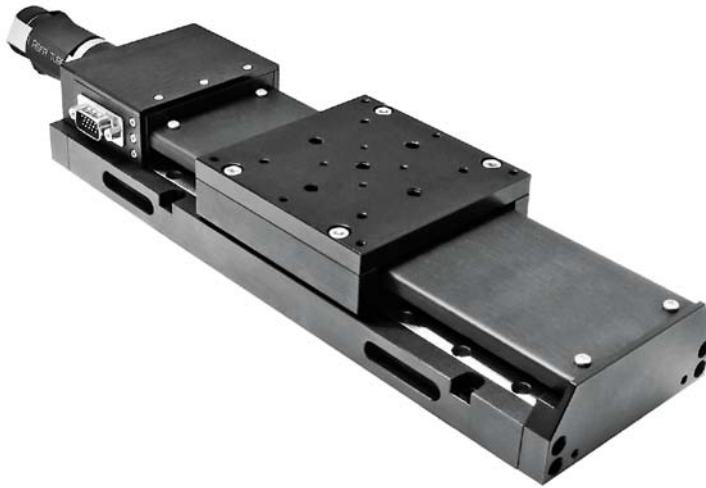


961-0095

MOTORIZED TRANSLATION STAGE WITH DC MOTOR



SPECIFICATIONS

Travel range	100 mm
Lead screw pitch	0.5 mm
Minimal incremental motion	0.2 μm
Resolution	0.028 μm
Max. speed	13 mm/s
Load capacity	
Horizontal	30 kg
Vertical	5 kg
Motor connector	HDB15(M)
DC motor	DCE RE25
Weight	2.2 kg

ORDERING INFORMATION

Code	Description	Price, EUR
960-0095	Motorized Translation Stage with stepper motor 4247	1515
961-0095	Motorized Translation Stage with DC motor & encoder	1852
960-0095SM	Motorized Translation Stage with SM system	2945

RECOMMENDED PRODUCTS



980-0040-USB
see page 8.189



980-0060-USB
see page 8.191

960-0095SM-XY-960-0150SM
3 Axis Motorized Translation-Rotation System

SPECIFICATIONS

Translation xy	100x100 mm
	960-0095SM
Rotation z	360°
	960-0150SM
Load capacity	5 kg on rotation stage



OPTICAL
TABLES

BRACKETS &
RAILS

BASE MOUNTS &
ACCESSORIES

OPTICAL
MOUNTS

OPTICAL
POSITIONERS

BASE
POSITIONERS

TRANSLATION &
ROTATION STAGES

ADJUSTMENT
SCREWS

MOTORIZED
POSITIONERS