

960-0080

MOTORIZED TRANSLATION STAGE

Short stage – long travel!



Code	Price, EUR
960-0080	921

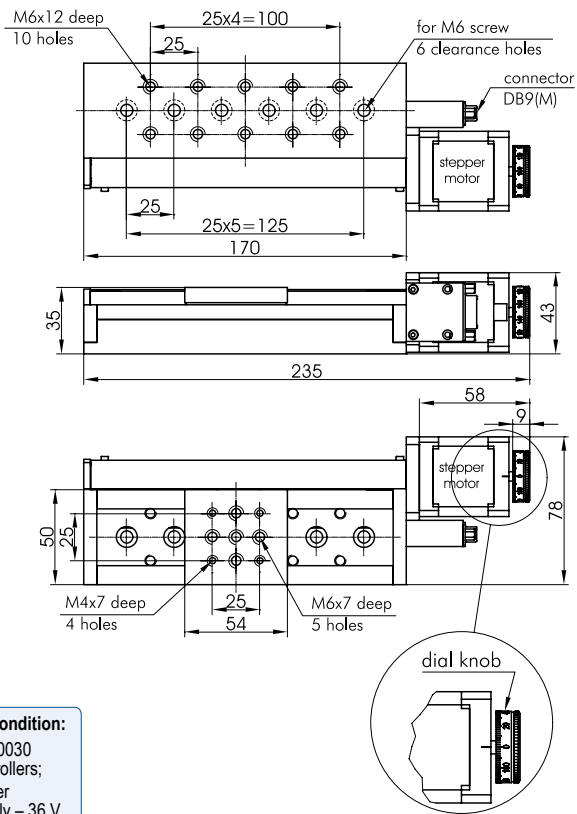
SPECIFICATIONS

Model	960-0080
Travel range	100 mm
Lead screw pitch	0.5 mm
Resolution*	
in full step	2.5 μm
in 1/8 step	0.31 μm
Max. speed*	10 mm/s
Load capacity:	
horizontal	8 kg
vertical	3 kg
Motor connector	DB9(M)
Stepper motor	4247
Weight	1.3 kg
Mechanical end limit switches	2
Switch polarity	pushed is closed

***Test condition:**

- 980-0030 controllers;
- Power supply – 36 V.

On request we fit alternative motors.



RECOMMENDED CONTROLLERS



980-0040-USB
see page 8.189



980-0030-RS232
see page 8.188

OPTICAL TABLES

BRACKETS & RAILS

BASE MOUNTS & ACCESSORIES

OPTICAL MOUNTS

OPTICAL POSITIONERS

BASE POSITIONERS

TRANSLATION & ROTATION STAGES

ADJUSTMENT SCREWS

MOTORIZED POSITIONERS