

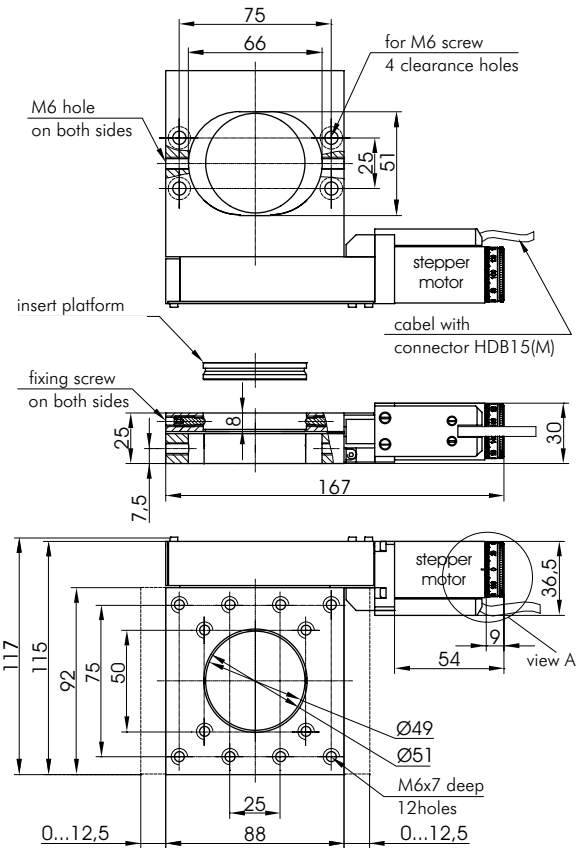
960-0070-02 **MOTORIZED TRANSLATION STAGE**



960-0070-02BS1 / 960-0070-02LS
with insert platform

960-0070-02BS1, unlike the 960-0070-02LS, is designed for high-speed movement. Used ball bearing lead screw makes movement fast and smooth.

The positioner also can be used with microscope on XY axes. As shown in the pictures, the upper plate has a removable insert in the center, the size of which is 2 inches, the base plate is made with slot size of 51 × 76 mm, on the same vertical.

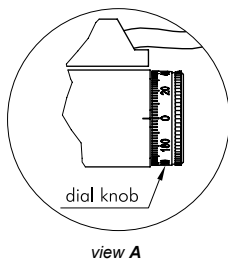


960-0070-02BS1 / 960-0070-02LS

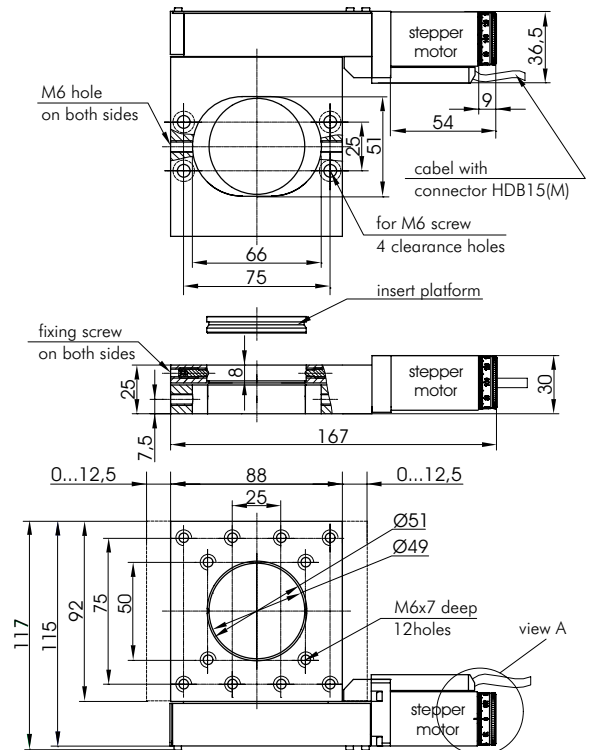
“Mirror” version of 960-0070-02BS1 and 960-0070-02LS



960-0070-02BS1-M / 960-0070-02LS-M
with insert platform

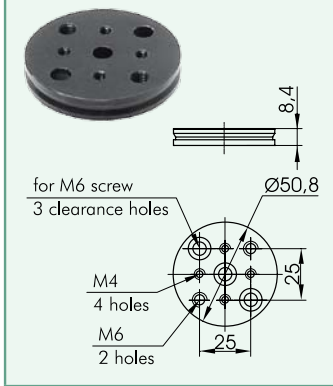


960-0070-02BS1-M / 960-0070-02LS-M



OPTICAL TABLES
BRACKETS & RAILS
BASE MOUNTS & ACCESSORIES
OPTICAL MOUNTS
OPTICAL POSITIONERS
BASE POSITIONERS
TRANSLATION & ROTATION STAGES
ADJUSTMENT SCREWS
MOTORIZED POSITIONERS

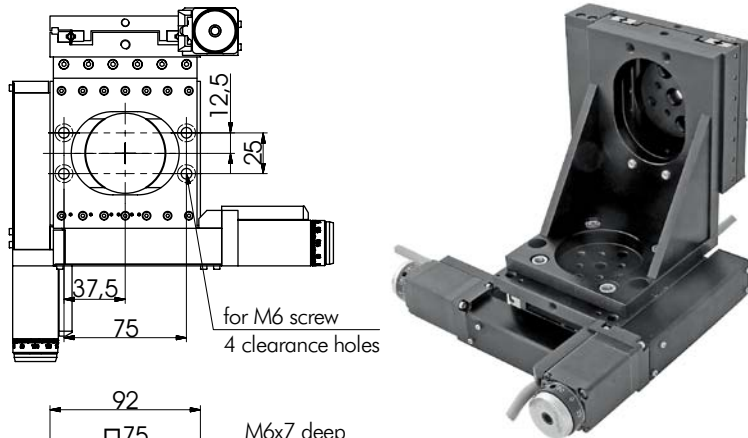
Insert platform



SPECIFICATIONS

Model	960-0070-02BS1	960-0070-02LS
Travel range, mm	25	
Resolution in full step, μm	5	1.25
in 1/8 step, μm	0.625	0.156
Ball screw pitch, mm	1	-
Lead screw pitch, mm	-	0.25
Repeatability, μm	1.5	1
Maximum speed, mm/s	25	6
Maximum load capacity		
Horizontal, kg	30	30
Vertical, kg	7	7
Mechanical end limit switches	2, pushed is closed	
Cable	1.6 m length cable is included	
Motor connector	HDB15(M)	
Stepper motor	28	
Weight, kg	0.8	
Price, EUR	583	478

960-0070-02 XYZ 3 axis translation

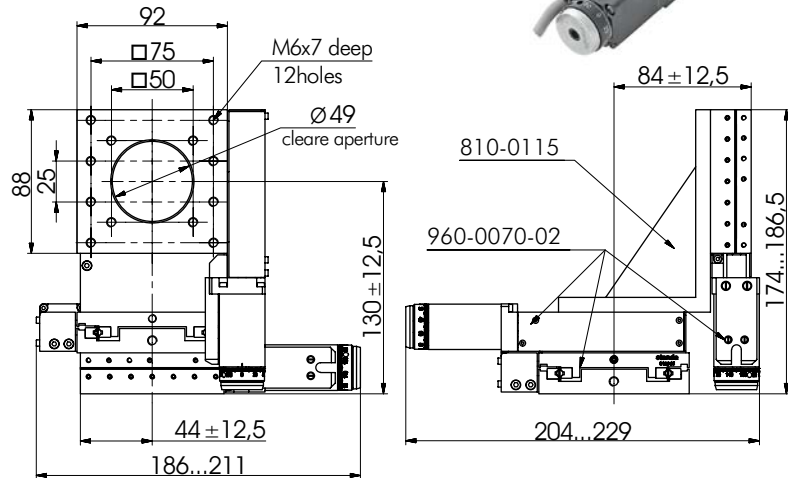


Angle Bracket 810-0115



Angle bracket 810-0115 is used to transform "horizontal" translators into vertical ones, result is 960-0070-02 XYZ 3 axis translation system.

See page 8.25 for details.



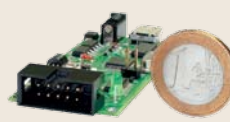
Complementary Products

Code	Page
810-0115	8.25
820-0136	8.38

RECOMMENDED PRODUCTS



980-0040-USB
see page 8.189



980-0060-USB
see page 8.191



Power Supply
see page 8.192