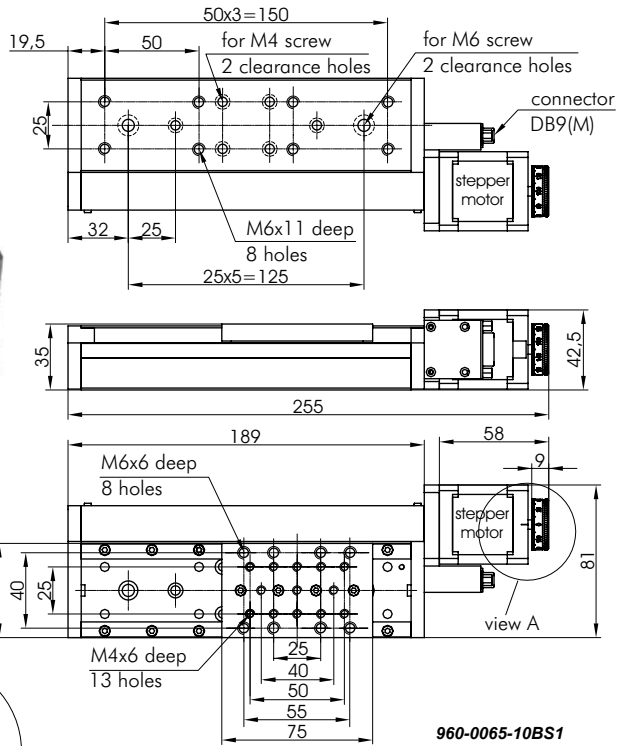
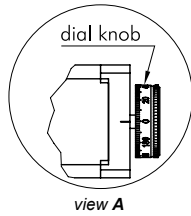


960-0065 **MOTORIZED TRANSLATION STAGE**

- **Narrow**
- **Compact design**
- **High speed**
- **Heavy load capacity**
- **X-Y-Z configurations available**
- **Motors of other types are available**
- **Vacuum version is available**



960-0065-20BS1



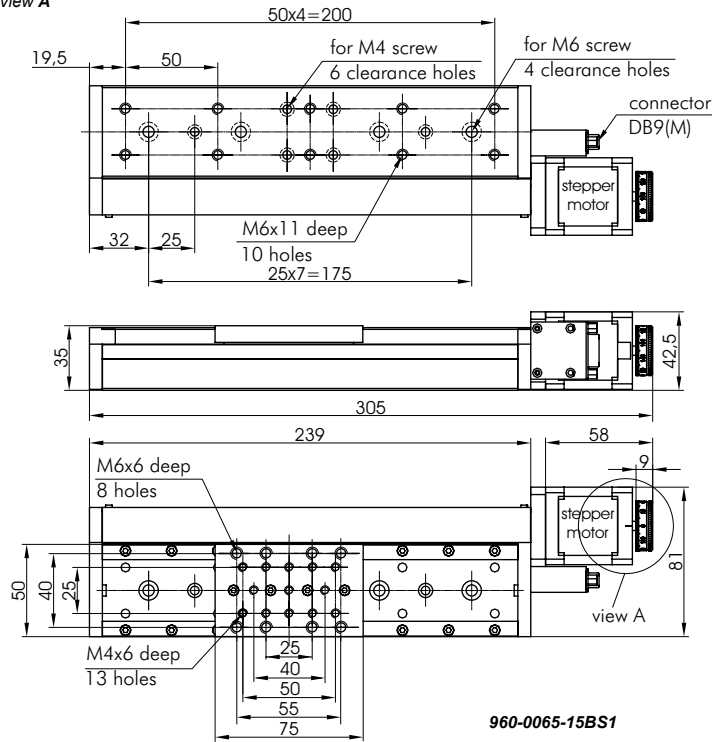
960-0065-10BS1

SPECIFICATIONS

| | |
|--------------------------|----------|
| Travel range: | |
| 960-0065-10BS1 | 100 mm |
| 960-0065-15BS1 | 150 mm |
| 960-0065-20BS1 | 200 mm |
| Ball screw pitch | 1 mm |
| Resolution in full step* | 5 μm |
| Max. speed* | 20 mm/s |
| Load capacity: | |
| Horizontal | 30 kg |
| Vertical | 8 kg |
| Motor connector | DB9(M) |
| Stepper motor | 4247 |
| Assemblies: | |
| X-Y | directly |
| Z | 810-0160 |

***Test condition:**
 • 980-0030 controllers;
 • Power supply – 36 V.

| Code | Weight, kg | Price, EUR |
|----------------|------------|------------|
| 960-0065-10BS1 | 1.1 | 1024 |
| 960-0065-15BS1 | 1.4 | 1333 |
| 960-0065-20BS1 | 1.65 | 1722 |



960-0065-15BS1

OPTICAL TABLES
 BRACKETS & RAILS
 BASE MOUNTS & ACCESSORIES
 OPTICAL MOUNTS
 OPTICAL POSITIONERS
 BASE POSITIONERS
 TRANSLATION & ROTATION STAGES
 ADJUSTMENT SCREWS
 MOTORIZED POSITIONERS

OPTICAL
TABLES

BRACKETS &
RAILS

BASE MOUNTS &
ACCESSORIES

OPTICAL
MOUNTS

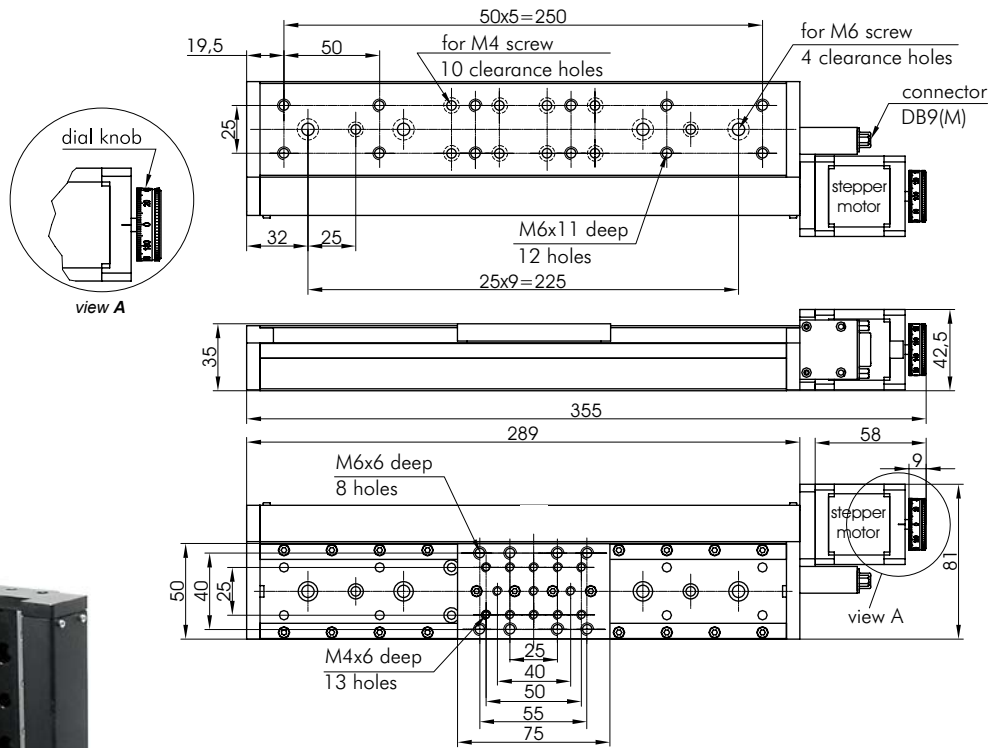
OPTICAL
POSITIONERS

BASE
POSITIONERS

TRANSLATION &
ROTATION STAGES

ADJUSTMENT
SCREWS

MOTORIZED
POSITIONERS



960-0065-20BS1



960-0065-20BS1 XYZ



810-0160

Angle Bracket 810-0160 is used to transform "horizontal" translators into vertical ones.

See page 8.30 for more information.

RECOMMENDED CONTROLLERS



980-0040-USB
see page 8.189



980-0030-RS232
see page 8.188